

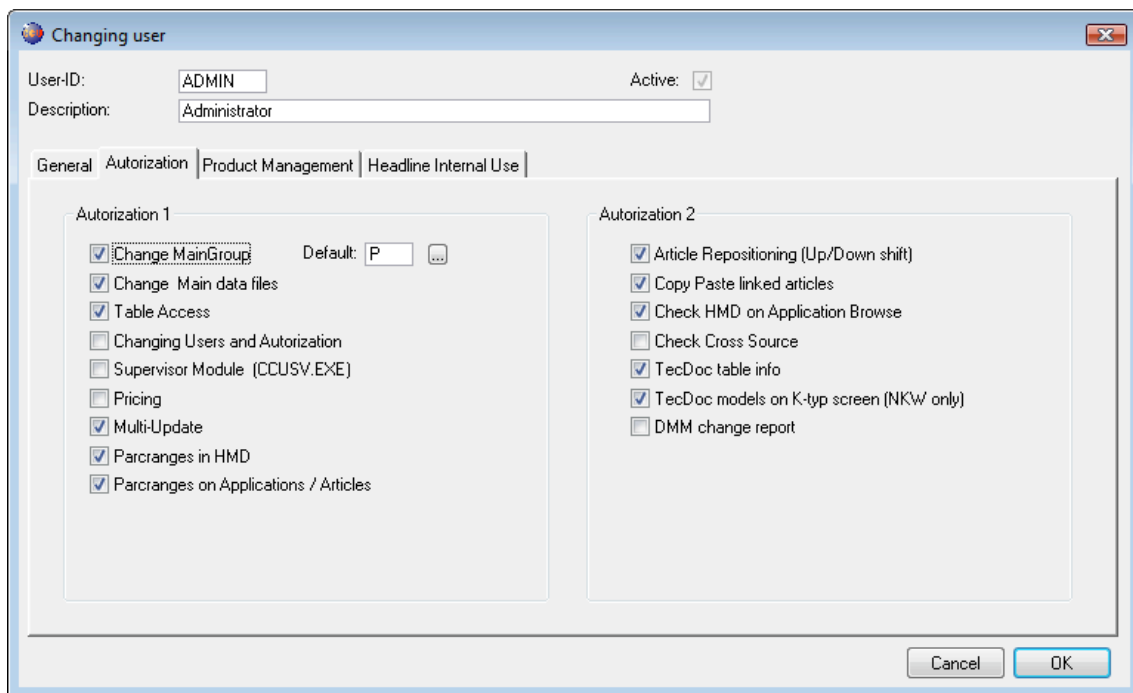
## What's new?

From release 5.0, Main Groups have been added to CCU. A Main Group specifies an overall level for the CCU vehicle and article-link part of the database giving the possibility to include more Main Groups (ie. Passenger Cars + Heavy Duty) in a single CCU version. Please note that only Headline can create Main Groups. As with the Headarticlegroups, when you need to have more, please contact Headline.

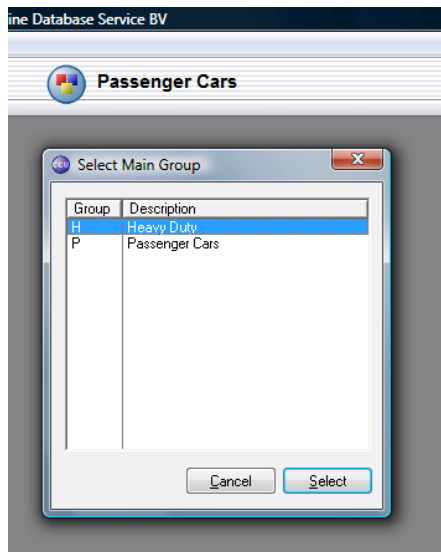


When enabled, you can use the button "Select Main Group" to switch between Main Groups. Note that this can be set per user, so there may be users who need to work with more than one Main Group, but it can also be the case that a user only needs to work with one Main Group. In the latter case, you will probably not (need to) see this button.

Note for Supervisors : this can be set in the CCU Supervisor Module, under "Internal tables", "Users". When you look to the "Autorization 1"-block on the "Autorization"-sheet, you see the first option is "Change MainGroup". Checking or unchecking this option means enabling or disabling the "Select Main Group"-button in CCU for this user. Also, with the option "Default:" you can set the Default Main Group to be opened when this users starts CCU.

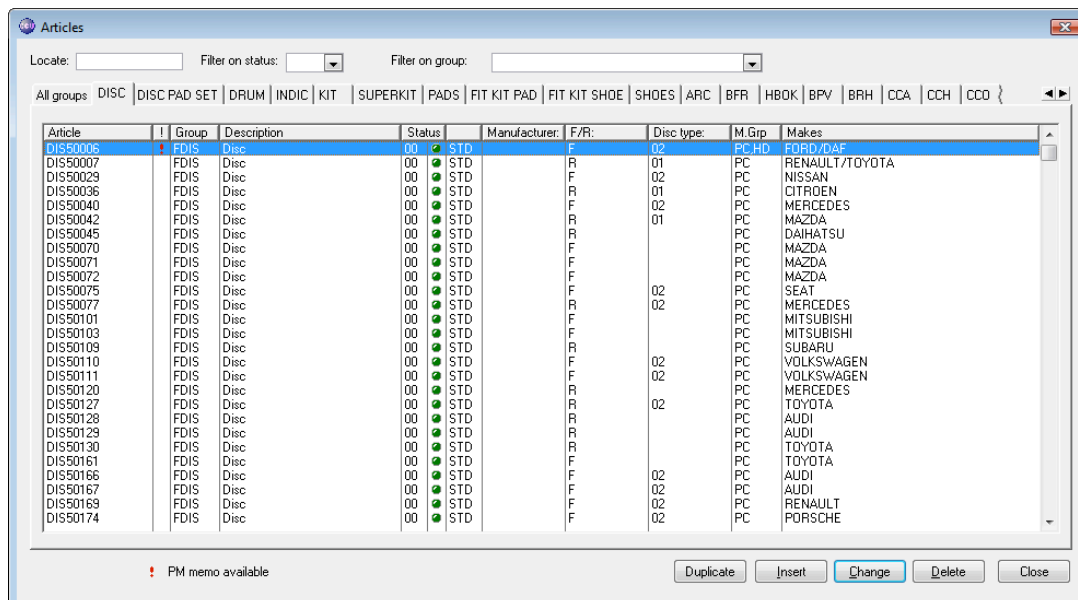


Let's proceed with the "Select Main Group"-button in CCU. The idea of this button is to switch "Modes" for the entire program. So when you were working, for example, in the Passenger Cars, and you want to switch to Heavy Duty vehicles, you can click this button to change all menu options and windows, inside your CCU instance, to another Main Group. One condition is that you need to close all currently opened windows inside CCU before switching Main Groups. When you don't, you will get a message.

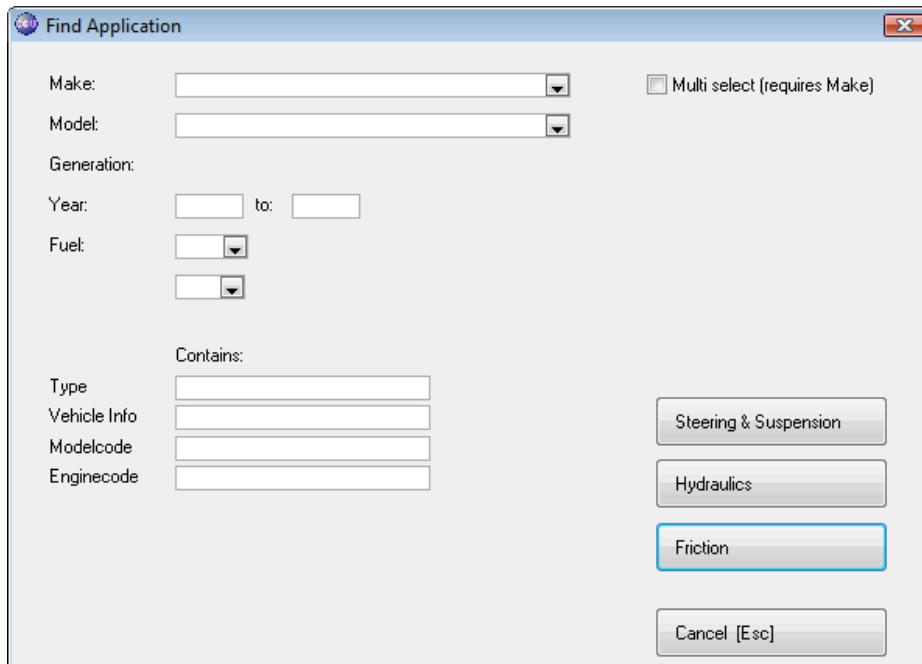


On the right side of the button, you can see the currently selected Main Group. By pressing the button, you get a pop-up window showing the possible Main Group selections. Choose one by clicking it's line and choose "Select".

Now you have switched Main Groups, let's take a look at the differences. The first thing to notice is that some menu options may have (dis)appeared. This is because some options are only for Passenger Cars, some only for Heavy Duty, etc. One option that disappeared is the Headline Model Database (HMD), simply because this only contains Passenger Cars. Also, the Makes and Models to choose from are different and some application attributes can be different.



On the "Articles"-window, nothing changed, because the base of the article stays the same. It can be that a Main Group uses different articles, but it can also use articles from another Main Group. Therefore, on the "Articles"-window, all articles are shown, together with an indication of the Main Groups it fits on (see column M. Grp).



**Find Application**

Make:    Multi select (requires Make)

Model:

Generation:

Year:  to:

Fuel:

Contains:

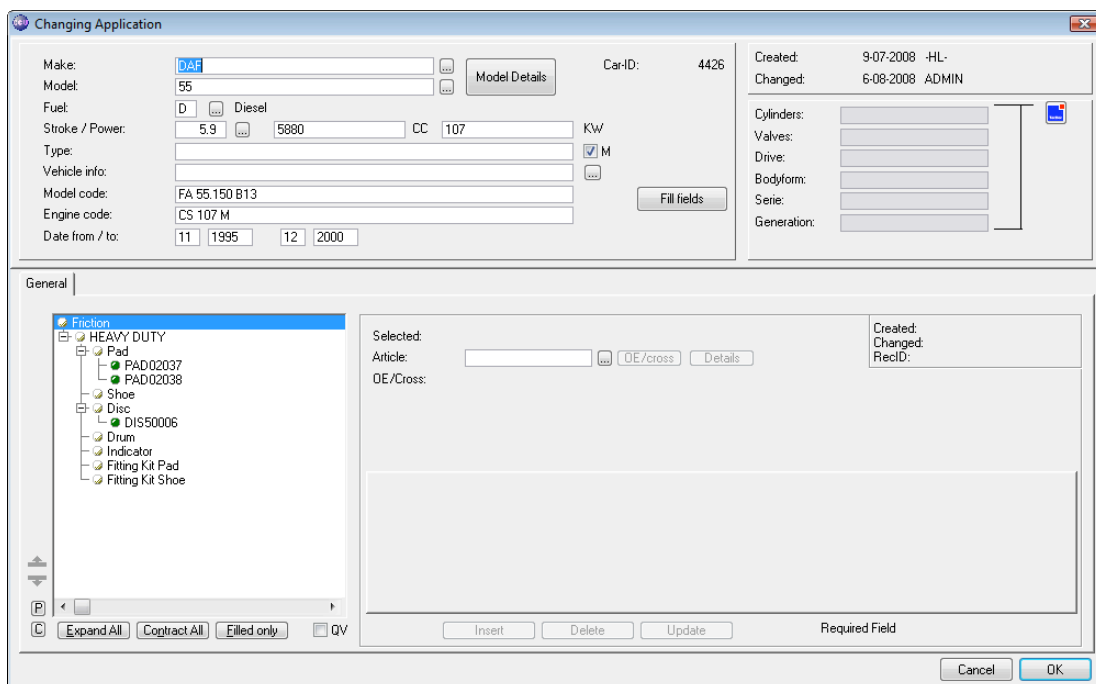
Type

Vehicle Info

Modelcode

Enginecode

On the "Find Application"-window the selections to choose from can be different. Also the available Headarticlegroups can differ, because it is possible that you may not have all articles for all Main Groups.



**Changing Application**

Make:    Car-ID: 4426 Created: 9-07-2008 -HL-  
 Model:   Changed: 6-08-2008 ADMIN

Fuel:   Diesel

Stroke / Power:   5880   KW

Type:   M

Vehicle info:

Model code:

Engine code:

Date from / to:

Cylinders:

Valves:

Drive:

Bodyform:

Series:

Generation:

**General**

**Friction**

- HEAVY DUTY
  - Pad
    - PAD02037
    - PAD02038
  - Shoe
  - Disc
    - DIS50006
  - Drum
  - Indicator
  - Fitting Kit Pad
  - Fitting Kit Shoe

Selected:

Article:

OE/Cross:

Created:

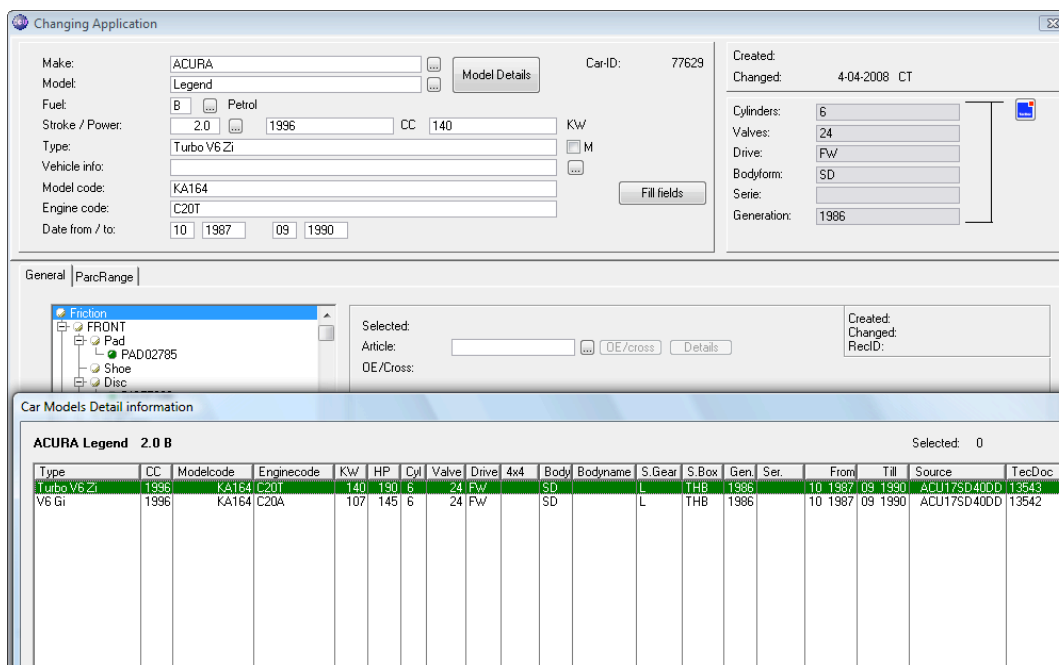
Changed:

RecID:

When you go further into the applications, the Make and Model selections and the article tree can be different. Also, because no Headline Model Details are linked, no carparc ranges are shown. Most other options in CCU work the same, they just display different data.

## Did you know?

For cataloguing purposes, you may want to specify a Type, a Modelcode and/or an Enginecode different from the ones the Headline Model Database proposes. Let's take a look at the following example:



Changing Application

Make: ACURA  
Model: Legend  
Fuel: B Petrol  
Stroke / Power: 2.0 1996 CC 140 KW  
Type: Turbo V6 Zi  
Vehicle info:  
Model code: KA164  
Engine code: C20T  
Date from / to: 10 1987 09 1990

Car-ID: 77629  
Created: 4-04-2008 CT  
Changed: 4-04-2008 CT

Cylinders: 6  
Valves: 24  
Drive: FW  
Bodyform: SD  
Serie:  
Generation: 1986

General | ParcRange

Friction  
FRONT  
PAD02785  
Shoe  
Disc

Selected:  
Article:  
OE/Cross:

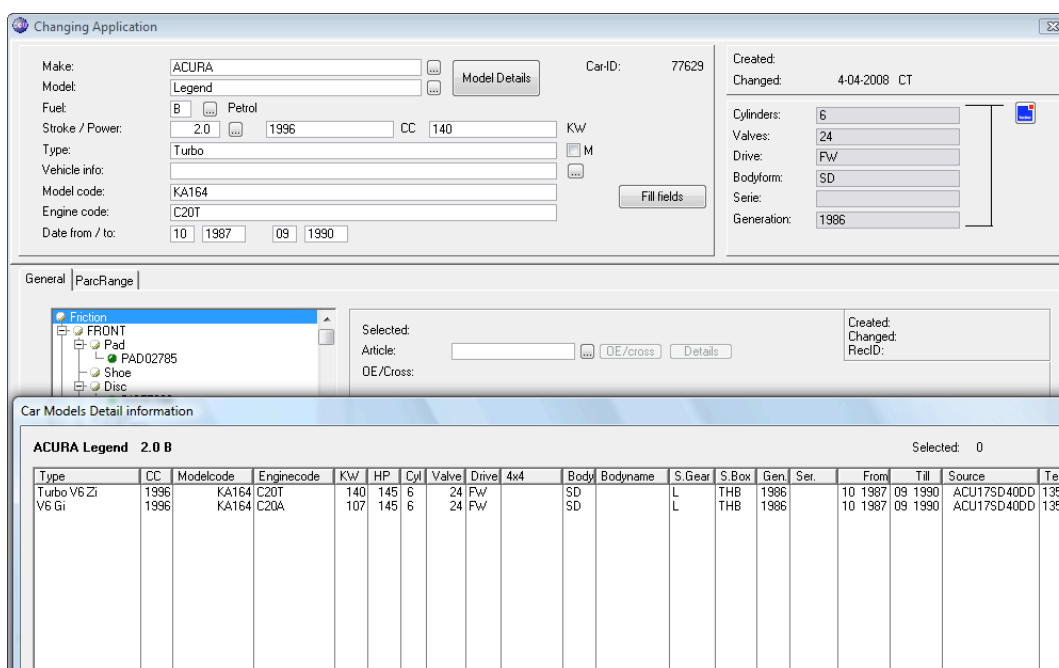
Created:  
Changed:  
RecID:

Car Models: Detail information

ACURA Legend 2.0 B Selected: 0

Type	CC	Modelcode	Enginecode	Kw	HP	Cyl	Valve	Drive	4x4	Body	Bodyname	S.Gear	S.Box	Gen.	Ser.	From	Till	Source	TecDoc
Turbo V6 Zi	1996	KA164	C20T	140	190	6	24	FW		SD		L	THB	1986		10 1987	09 1990	ACU17SD40DD	13543
V6 Gi	1996	KA164	C20A	107	145	6	24	FW		SD		L	THB	1986		10 1987	09 1990	ACU17SD40DD	13542

It is likely that you want to export this application to a catalogue with "Turbo" as Type. To do this, you can simply change the "Type"-field. But what happens now is that no Model Details are selected, resulting in a situation that this application will not be exported to TecDoc because no TecDoc K-Typ numbers are selected and this application will not have any parcranges linked to it (after running "Recalculate parcranges" in the CCU Supervisor Module).



Changing Application

Make: ACURA  
Model: Legend  
Fuel: B Petrol  
Stroke / Power: 2.0 1996 CC 140 KW  
Type: Turbo  
Vehicle info:  
Model code: KA164  
Engine code: C20T  
Date from / to: 10 1987 09 1990

Car-ID: 77629  
Created: 4-04-2008 CT  
Changed: 4-04-2008 CT

Cylinders: 6  
Valves: 24  
Drive: FW  
Bodyform: SD  
Serie:  
Generation: 1986

General | ParcRange

Friction  
FRONT  
PAD02785  
Shoe  
Disc

Selected:  
Article:  
OE/Cross:

Created:  
Changed:  
RecID:

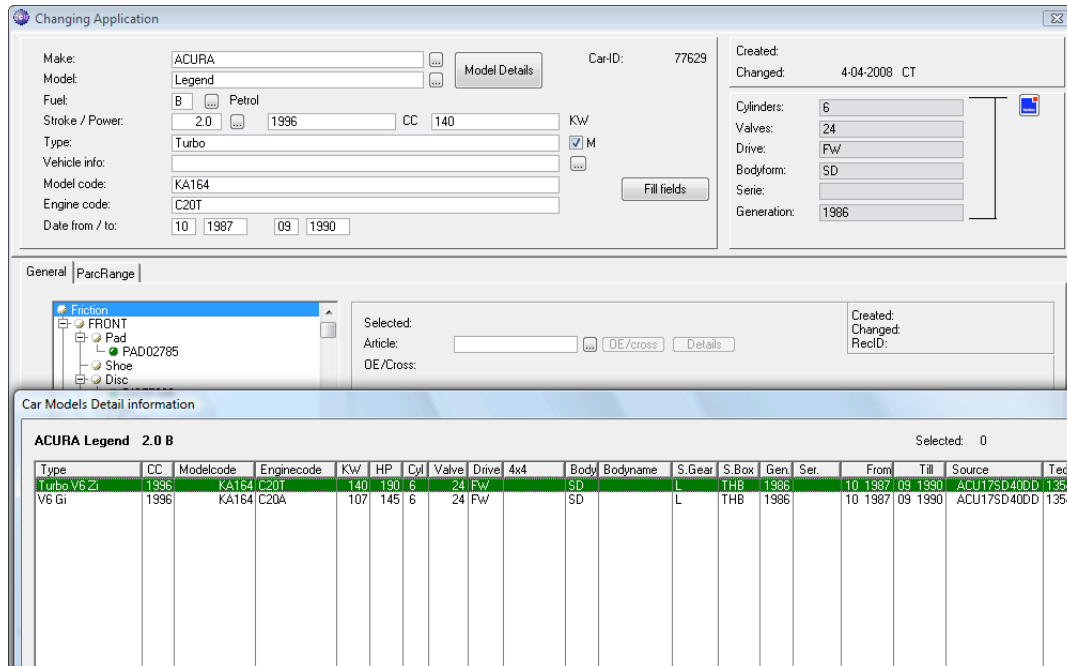
Car Models: Detail information

ACURA Legend 2.0 B Selected: 0

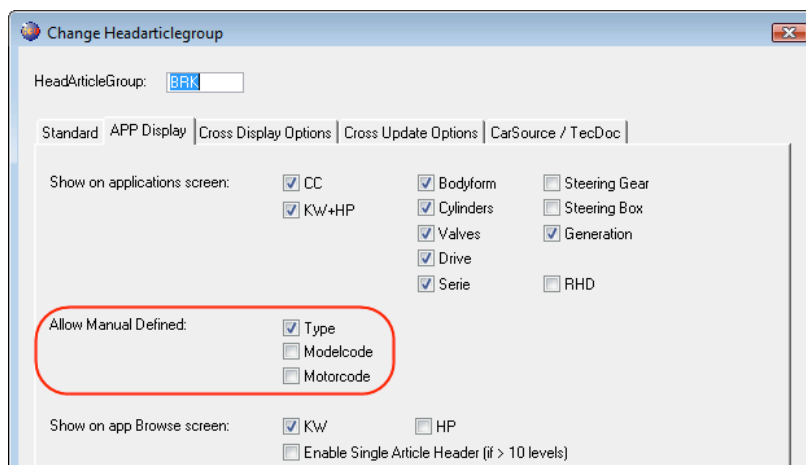
Type	CC	Modelcode	Enginecode	Kw	HP	Cyl	Valve	Drive	4x4	Body	Bodyname	S.Gear	S.Box	Gen.	Ser.	From	Till	Source	TecDoc
Turbo V6 Zi	1996	KA164	C20T	140	145	6	24	FW		SD		L	THB	1986		10 1987	09 1990	ACU17SD40DD	13543
V6 Gi	1996	KA164	C20A	107	145	6	24	FW		SD		L	THB	1986		10 1987	09 1990	ACU17SD40DD	13542

This happens because CCU now tries to find an ACURA Legend Petrol 2.0 with Type "Turbo". Since it cannot find this in the Headline Model Database, no Model Details are selected (which is correct). But how can this issue be solved ? By telling CCU that we want this Type in our catalogue, but when selecting Model Details, Type should be ignored in the search parameters.

This can be done by checking the "Manual Defined Type"-option behind the "Type"-field (M). The same applies to Model code and Engine code. When needed, please ask your CCU Supervisor to add these "Manual Defined"-options.



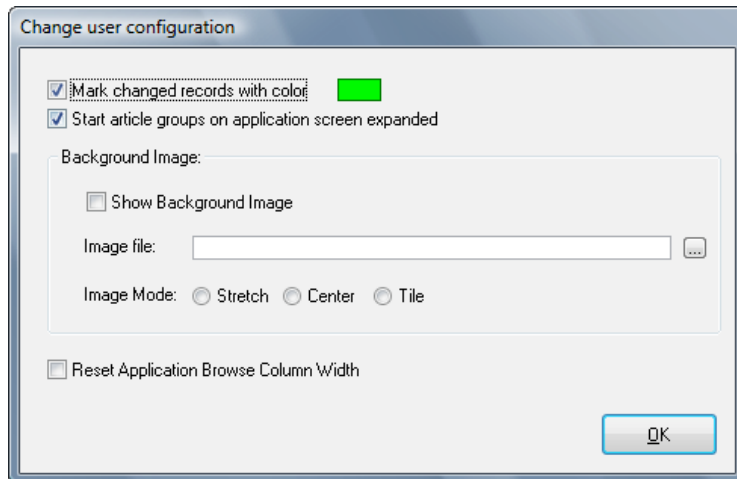
Note for Supervisors : this can be set in the CCU Supervisor Module under "Internal tables", "HeadArticle Groups (HAG)". After selecting a HeadArticle Group and clicking the "Change"-button, you will find these options on the sheet "APP Display".



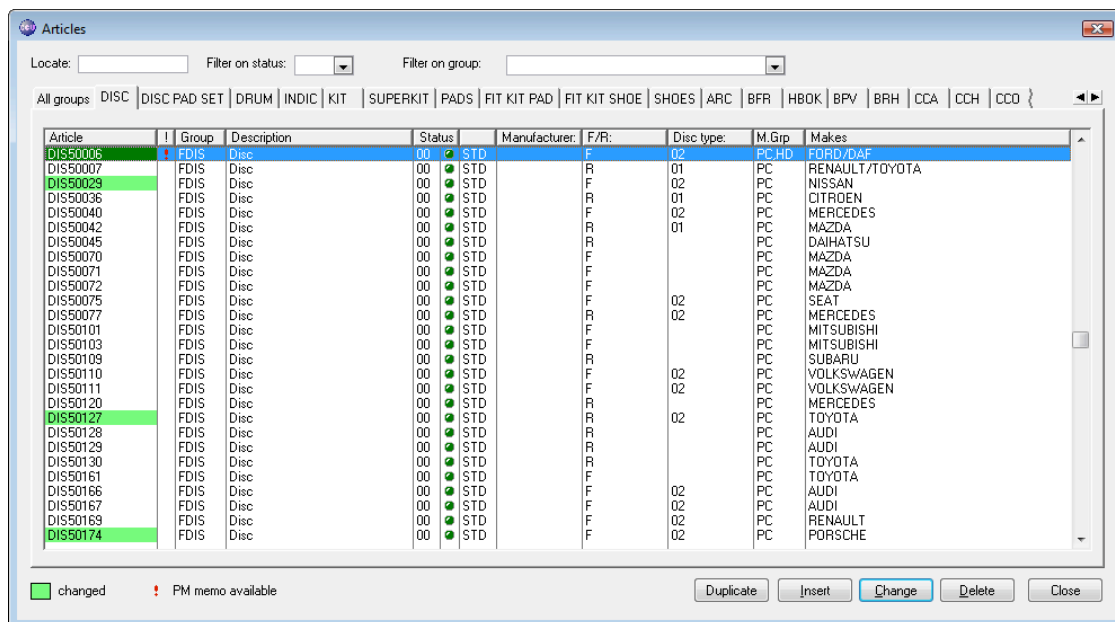
Under the header "Allow Manual Defined:" you can specify whether Manual Defined Types, Model codes and/or Engine codes can be made. Please be careful to select all options, because then users can also select all options on one application. This leads to the situation that too many Model Details get selected, because some of the most important search parameters are being ignored.

## Highlights

You may have been in a situation, where you wanted to see in CCU which articles or applications have changed over a certain period. This is where the option "Mark changed records with color" comes in.



When you are in CCU, just go to "Program", "Configuration". Here you can enable this option and click "OK" to confirm. When you now go to the "Articles"-window, you see that some articles are marked with a green color. Once you open an article and change something, this article gets marked too.



The same also applies to applications.

Applications

selected:

FRONT : KSS00001, PAD02203, SEP04965  
 REAR : SH001056  
 HANDBRAKE :

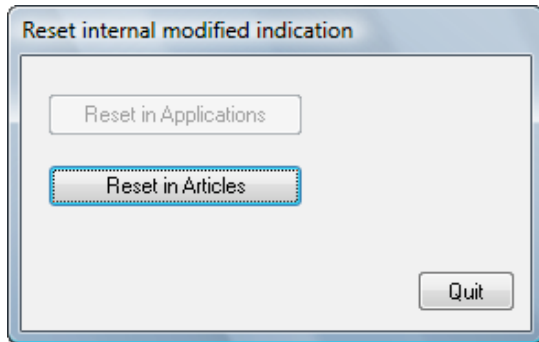
Make	Model	F	Stroke	Type	vehicle info	Model code	Enginecode	Cyl	Valve	Drive	Serie	Br
AC	428	B	7.0			PA/PC	L33	8	16	RW		CE
AC	Ace	B	4.6			1NMBCFN/1NMBHF	LT15C	8	32	RW		CE
AC	Ace	B	4.6			1NMBCFN	LT15C	8	32	RW		CE
AC	Ace	B	4.9			YA	99E	8	16	RW		CE
AC	Ace	B	4.9			1NMB CFL	99E	8	16	RW		CE
AC	Ace	B	4.9			1NMB CFL	99E	8	16	RW		CE
AC	Cobra	B	4.2			289F	HO3	8	16	RW		CE
AC	Cobra	B	4.2			289F	HO3	8	16	RW		CE
AC	Cobra	B	4.9			291F	99F	8	16	RW		CE
AC	Cobra	B	4.9			291F	99UM	8	16	RW		CE
AC	Cobra	B	4.9			291F	99F	8	16	RW		CE
AC	Cobra	B	4.9			291N	99F	8	16	RW		CE
AC	Cobra	B	5.8			291F7	99G	8	16	RW		CE
AC	ME3000	B	3.0			RA	LO1	6	12	RW		CF
AC	ME3000	B	3.0			RA	LO6	6	12	RW		CF
AC	Superblower	B	4.9			291F7	99UM	8	16	RW		CE
ACURA	Integra	B	1.6			DA3/DA4/DB4	D15A1	4	12	FW		CF
ACURA	Integra	B	1.6			DA3/DA4/DB4	D16A3	4	16	FW		CF
ACURA	Integra	B	1.6			DA3/DA4/DB4	D16A8	4	16	FW		CF
ACURA	Legend	B	2.0	Turbo V6 Zi		KA164	C20T	6	24	FW		SC
ACURA	Legend	B	2.0	V6 Gi		KA164	C20A	6	24	FW		SC
ACURA	Legend	B	2.5			KA264	C25A	6	24	FW		SC
ACURA	Legend	B	2.5			KA264	C25A1	6	24	FW		SC
ACURA	Legend	B	2.7			KA464	C27A1	6	24	FW		SC
ACURA	Legend	B	2.7			KA326	C27A1	6	24	FW		CF
ACURA	Legend	B	2.7			KA326	C27A2	6	24	FW		CF
ACURA	Legend	B	2.7			KA465	C27A2	6	24	FW		SC
ACURA	Legend	B	3.2			KA763/KA825	C32A2	6	24	FW		CF
ACURA	Legend	B	3.5			KA964	C35A5	6	24	FW		SC
ACURA	NSX	B	3.0			NA126	C30A3	6	24	RW		CF
ACURA	NSX	B	3.0			NA126	C30A4	6	24	RW		CF
ACURA	NSX	B	3.2			NA126	C32B2	6	24	RW		CF

show Car ID  changed

Print All Print Selected Copy Insert Change Delete Close

For this to be really useful, a Supervisor needs to “reset” these change markers once in a while. For example, when a Supervisor resets this on the end of a quarter, you can see which articles and applications have been changed in the last quarter.

Note for Supervisors : you can reset these change markers in the CCU Supervisor Module under “Tools”, “Reset Internally Updated code”. Here you have the option to reset these markers for articles and/or applications. Once you ran one option, it is grayed out.



Headline Database Service bv  
 Headline Software Technology bv  
 Horsterweg 24  
 6199 AC Maastricht Airport  
 The Netherlands  
 Tel.: +31 (0)43 36 50 212  
 Fax: +31 (0)43 36 50 125  
 Internet: [www.headlineweb.nl](http://www.headlineweb.nl)  
 E-mail: [info@headlineweb.nl](mailto:info@headlineweb.nl)