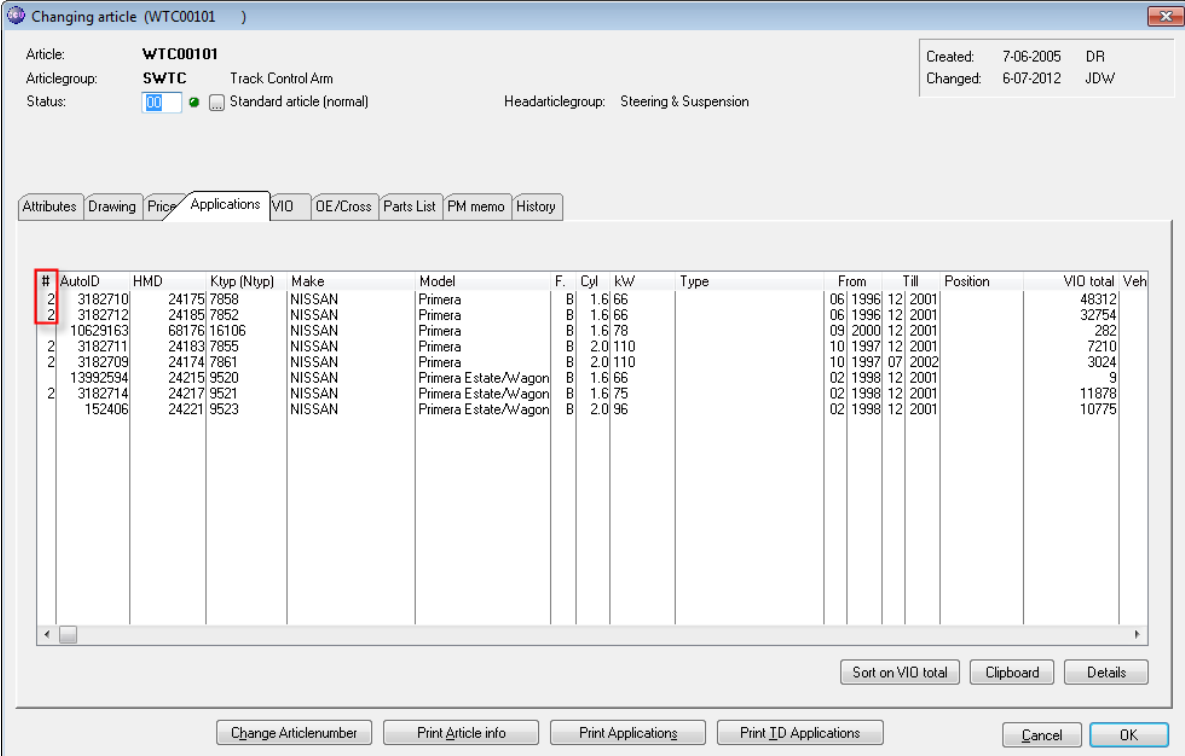


What's new?

The "Applications"-sheet on the "Changing Article"-window has been improved in visibility. In the past, when one single article fitted more than once on an application, you saw the same line multiple times. This caused confusion (also in combination with the VIO) and you had to scroll more on this list box to see the different linkages.

Therefore, application linkages are now shown uniquely (only once). On the other hand, you might still be interested if an article fits an application multiple times. For this, we added one extra column in the front of the view with a counter of how many times this particular article fits this application. Because in many cases, it will be 1, we decided to hide the number 1 indications. This way you can quickly see to which vehicles this article has been linked uniquely and to which vehicles this article fits multiple times.



Changing article (WTC00101)

Article: **WTC00101**
 Articlegroup: **SWTC** Track Control Arm
 Status: Standard article (normal) Headarticlegroup: Steering & Suspension

Created: 7-06-2005 DR
 Changed: 6-07-2012 JDW

Attributes Drawing Price Applications VIO DE/Cross Parts List PM memo History

#	AutID	HMD	Ktyp (Ntyp)	Make	Model	F.	Cyl	kW	Type	From	Till	Position	VIO total	Veh
2	3182710	24175	7858	NISSAN	Primera	B	1,6	66		06/1996	12/2001		48312	
2	3182712	24185	7852	NISSAN	Primera	B	1,6	66		06/1996	12/2001		32754	
2	10629163	68176	16106	NISSAN	Primera	B	1,6	78		09/2000	12/2001		282	
2	3182711	24183	7855	NISSAN	Primera	B	2,0	110		10/1997	12/2001		7210	
2	3182709	24174	7861	NISSAN	Primera	B	2,0	110		10/1997	07/2002		3024	
2	13992594	24215	9520	NISSAN	Primera Estate/Wagon	B	1,6	66		02/1998	12/2001		9	
2	3182714	24217	9521	NISSAN	Primera Estate/Wagon	B	1,6	75		02/1998	12/2001		11878	
2	152406	24221	9523	NISSAN	Primera Estate/Wagon	B	2,0	96		02/1998	12/2001		10775	

Sort on VIO total Clipboard Details

Change Articlenumber Print Article info Print Applications Print ID Applications Cancel OK

What's new?

Previously, when double-clicking a line on the "Applications"-sheet on the "Changing Article"-window to bring up the vehicle with its article linkages, you might have spent a considerable amount of time finding the article number you started with and locate it in the article tree. This was especially when you have lots of article groups in your article tree, but sometimes also when a lot of articles are linked in the same article group.

We now have a solution for this. Let's take an example. We want to start with article number WTC00101 and open this article linked on the HMD number 24215. First we open the article and double click the correct line at the "Applications"-sheet.

Changing article (WTC00101)

Article: **WTC00101**
 Articlegroup: **SWTC** Track Control Arm
 Status: 00 Standard article (normal) Headarticlegroup: Steering & Suspension

Created: 7-06-2005 DR
 Changed: 6-07-2012 JDW

Attributes Drawing Price Applications **VID** OE/Cross Parts List PM memo History

#	AutolD	HMD	Ktyp (Ntyp)	Make	Model	F.	Cyl	kw	Type	From	Till	Position	VID total	Veh
2	3182710	24175	7858	NISSAN	Primera	B	1.6	66		06 1996	12 2001		48312	
2	3182712	24185	7852	NISSAN	Primera	B	1.6	66		06 1996	12 2001		32754	
2	10629163	68176	16106	NISSAN	Primera	B	1.6	78		09 2000	12 2001		282	
2	3182711	24183	7855	NISSAN	Primera	B	2.0	110		10 1997	12 2001		7210	
2	3182709	24174	7861	NISSAN	Primera	B	2.0	110		10 1997	07 2002		3024	
2	13992594	24215	9520	NISSAN	Primera Estate/Wagon	B	1.6	66		02 1998	12 2001		5	
2	3182714	24217	9521	NISSAN	Primera Estate/Wagon	B	1.6	75		02 1998	12 2001		11878	
2	152406	24221	9523	NISSAN	Primera Estate/Wagon	B	2.0	96		02 1998	12 2001		10775	

Sort on VID total Clipboard Details

Change Articlenumber Print Article info Print Applications Print ID Applications Cancel OK

Now we usually had to scroll down in the article tree to find article number WTC00101.

Changing Application

HMD car ID: **24215** CarID: 13992594
 Make: NISSAN
 Modelrange: Primera
 Model: Primera Estate/Wagon
 Fuel: B Petrol
 Stroke / Power: 1.6 cc: 1597 KW 66 HP: 90
 Type:
 Vehicle info:
 Model code: WP11E
 Engine code: GA16DE
 Date from / to: 02 1998 12 2001

Created: 24-08-2011 *HL
 Changed: 6-07-2012 JDW

Cylinders: 4 Valves: 16
 Drive: FW BodyF./Drs: CM 4
 Serie: Generation: 1997
 St. Gear: L/R St. Box: THB
 TD Model:
 TD Engine: GA16DE
 K-typ.: 9520
 N-typ.:

General **VID**

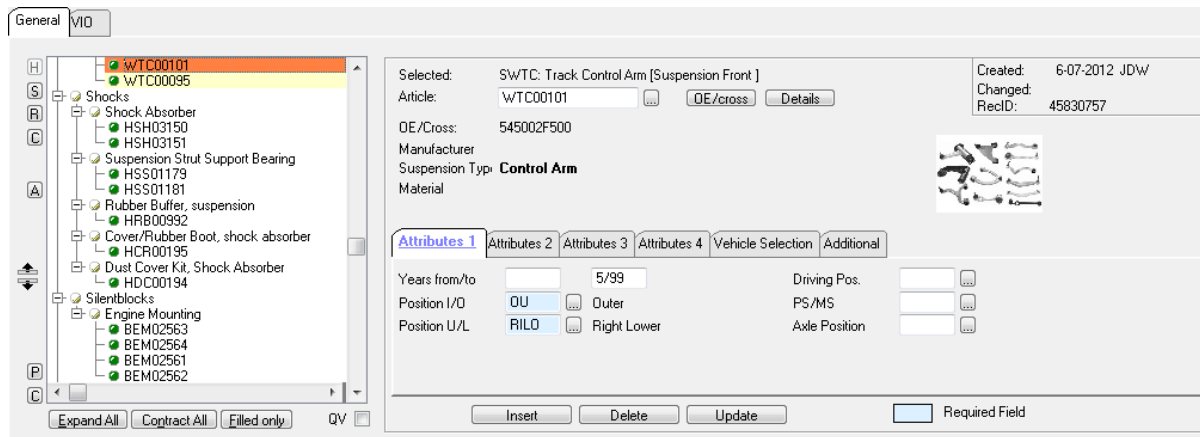
Steering & Suspension

- Steering
 - SSG00064
 - SSG00067
 - SSG00061
 - SSG00068
 - SSG00069
 - SSG00069
 - SSG00065
 - SSG00063
- Bellows (steering)
 - SBE00015
 - SBE00014
- Tie Rod End
 - STE00030
- Hydraulic Pump (steering)
 - SHP00035
- Suspension Front
 - Bushing, stabilizer
 - WBS00033

Selected: Article: OE/cross: Details
 OE/Cross:
 Created:
 Changed:
 RecID:
 Insert Delete Update

PM: clear all Cancel OK

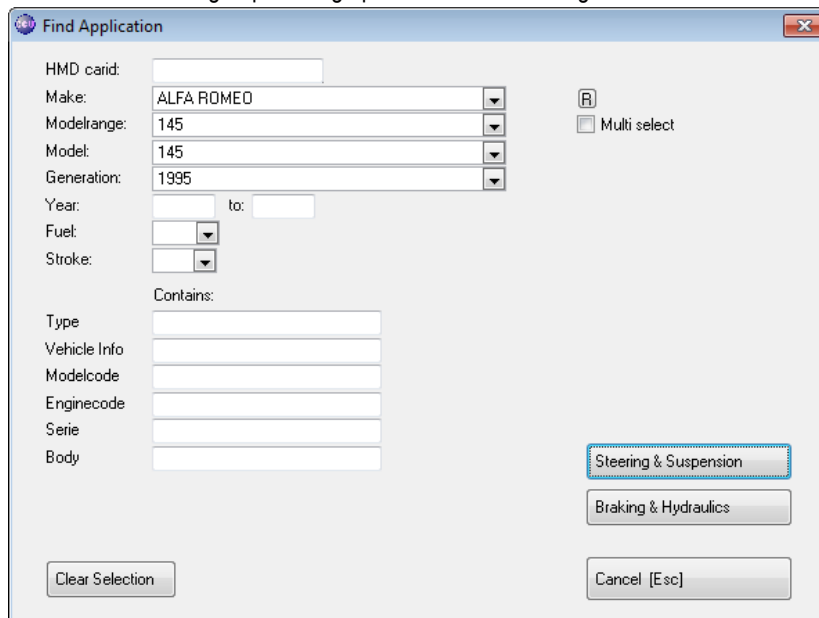
However, clicking the "A"-button on the left-hand side of the article tree results in the cursor being positioned to the correct article, WTC00101 in this example.



The screenshot shows the CCU software interface. On the left is a tree view of vehicle components. The selected item is 'SWTC: Track Control Arm [Suspension Front]'. The main area displays details for this component, including its article number (WTC00101), OE/Cross (545002F500), and suspension type (Control Arm). There are also fields for 'Years from/to' (5/99), 'Position I/O' (OU - Outer), and 'Position U/L' (RILO - Right Lower). Buttons for 'Insert', 'Delete', and 'Update' are visible at the bottom.

What's new?

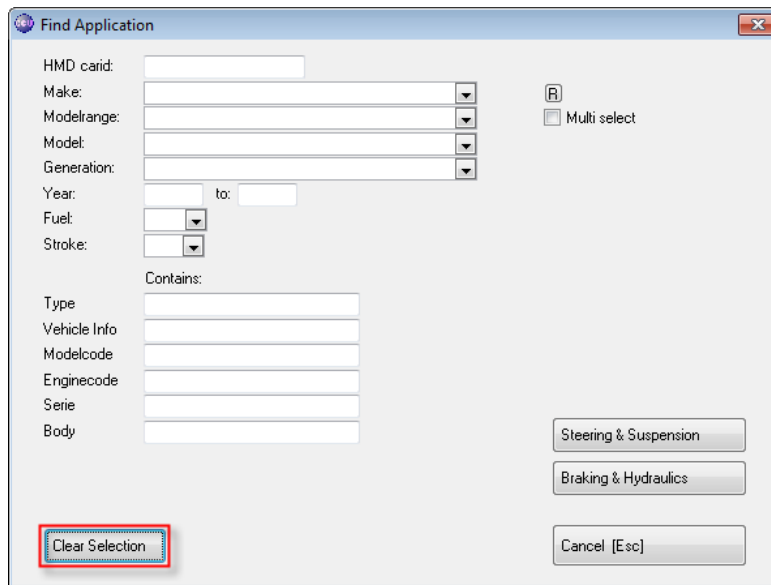
When searching on a vehicle on the "Find Application"-window you fill in several search fields and click the button of the desired Head article group to bring up the vehicles matching that selection.



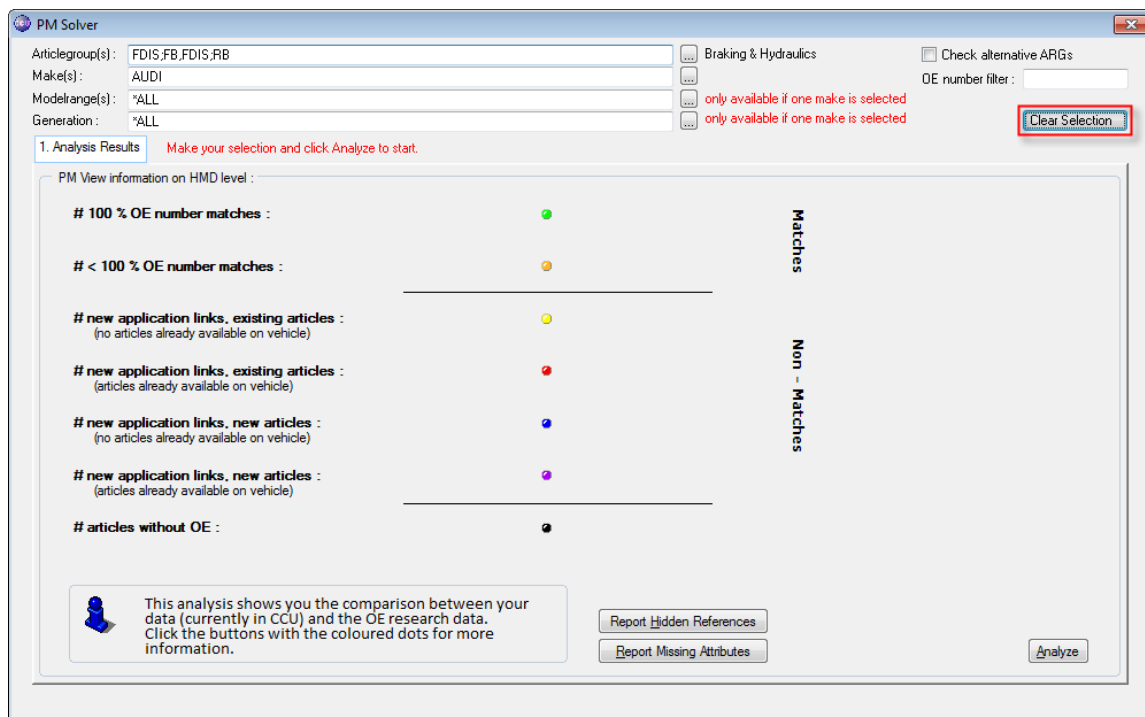
The 'Find Application' dialog box contains the following fields and options:

- HMD carid: [Text field]
- Make: ALFA ROMEO [Dropdown menu]
- Modelrange: 145 [Dropdown menu]
- Model: 145 [Dropdown menu]
- Generation: 1995 [Dropdown menu]
- Year: [Text field] to: [Text field]
- Fuel: [Dropdown menu]
- Stroke: [Dropdown menu]
- Contains: [Text field]
- Type: [Text field]
- Vehicle Info: [Text field]
- Modelcode: [Text field]
- Enginecode: [Text field]
- Serie: [Text field]
- Body: [Text field]
- Buttons: Steering & Suspension, Braking & Hydraulics, Cancel [Esc]
- Clear Selection button
- Multi select checkbox (unchecked)

Previously, when you wanted a different selection afterwards, you had to close the "Find Application"-window and reopen it. Alternatively, you could clear all the fields one by one by selecting the text in the boxes and pressing "Delete" or "Backspace" on your keyboard.



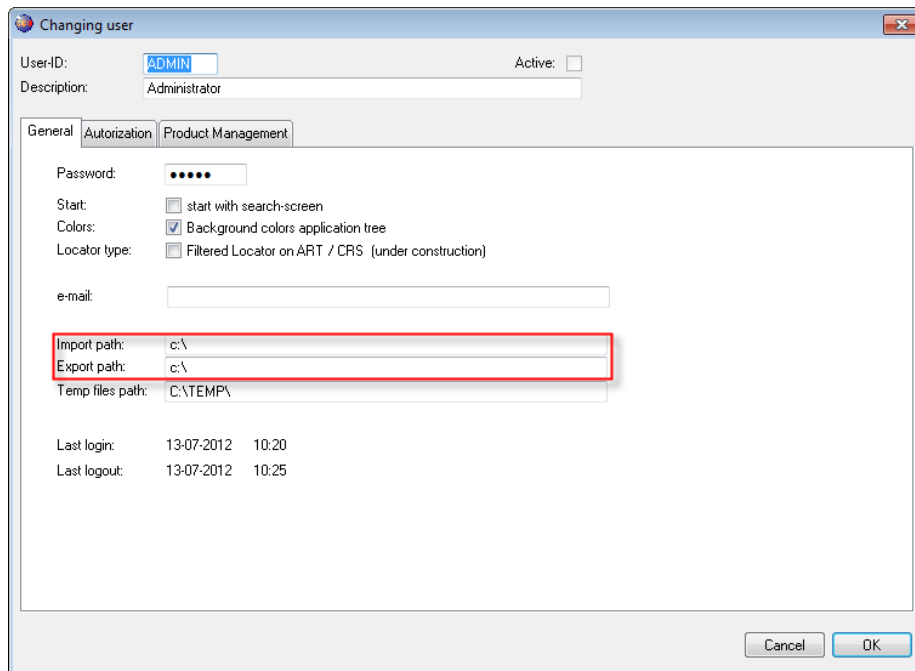
Now, all you have to do is to click the “Clear Selection”-button and all fields are empty, so you can start a new search.



The same button is also available in the PM solver, resetting all your selection fields and positioning back to the default sheet (1. Analysis Results).

What's new?

In the CCU Supervisor Module, the user authorizations have been extended. Also, the window is built up differently to give you a better overview of the different authorizations. Furthermore, to improve the security of CCU, the Windows User Account Control (UAC) settings have changed. This results in CCU not being able to write in protected folders on your pc (unless your system administrator configured it differently and gave you administrator rights). For example, normal users are no longer able to write files in the root of the C:\ drive. Let's take a look at the changes.



Changing user

User-ID: ADMIN Active:

Description: Administrator

General | Authorization | Product Management

Password: ●●●●

Start: start with search-screen

Colors: Background colors application tree

Locator type: Filtered Locator on ART / CRS (under construction)

e-mail:

Import path: c:\

Export path: c:\

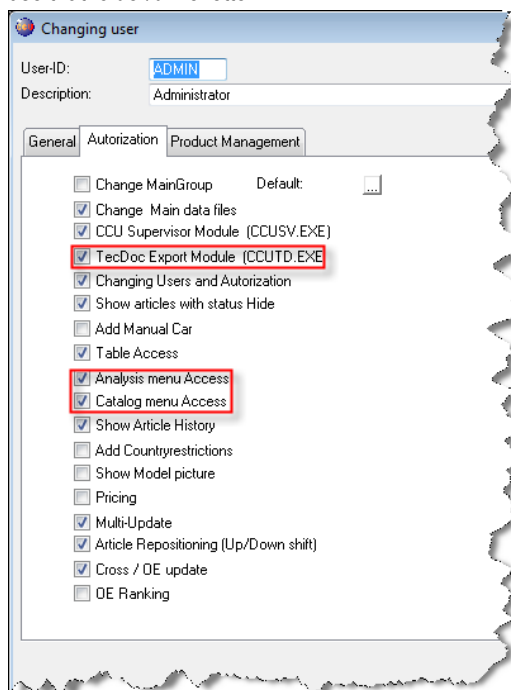
Temp files path: C:\TEMP\

Last login: 13-07-2012 10:20

Last logout: 13-07-2012 10:25

Cancel OK

On the “General”-sheet, the import and export path might need to be changed. The example above contains an invalid import and export path. Please change to a folder where a user has write permissions to (also respecting the Windows UAC). If your company has a folder for each user on the network (and possibly mapped a drive letter to this), we strongly advise to use that folder/drive letter.



Changing user

User-ID: ADMIN

Description: Administrator

General | Authorization | Product Management

Change MainGroup Default: ...

Change Main data files

CCU Supervisor Module (CCUSV.EXE)

TecDoc Export Module (CCUTD.EXE)

Changing Users and Authorization

Show articles with status Hide

Add Manual Car

Table Access

Analysis menu Access

Catalog menu Access

Show Article History

Add Countryrestrictions

Show Model picture

Pricing

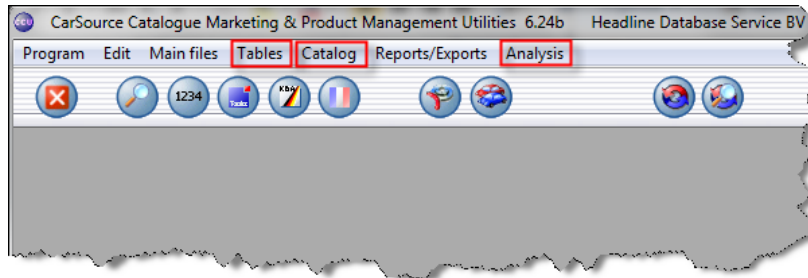
Multi-Update

Article Repositioning (Up/Down shift)

Cross / OE update

OE Ranking

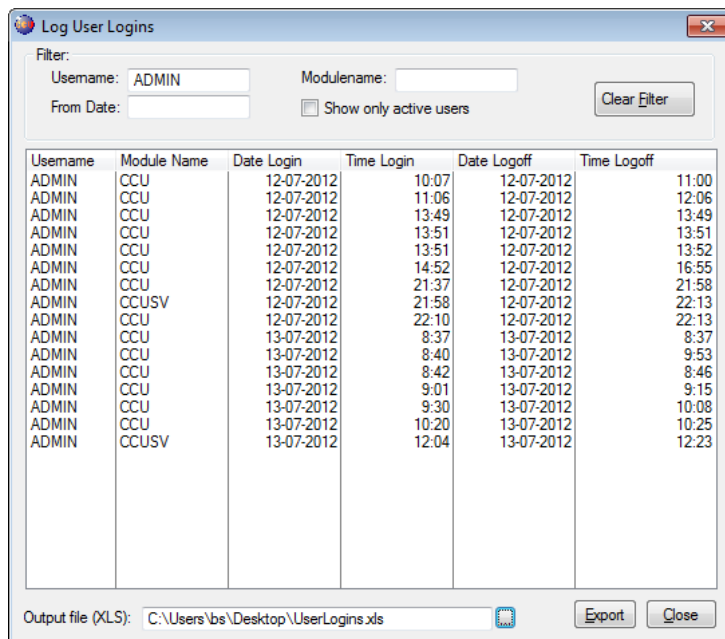
On the “Authorization”-sheet, the checkboxes have been sorted differently to have a better overview. Also, new authorizations have been added. For example, the TecDoc Export Module of CCU (CCUTd.exe) now also has a login screen to prevent each user from accessing this module unnecessary. To make sure a user can login into this module, active the “TecDoc Export Module (CCUTD.EXE)”- checkbox for this user.



Also, the menus in the CCU “Tables”, “Catalog” and “Analysis” can be activated per users by clicking the checkboxes “Table Access”, “Catalog menu Access” and “Analysis menu Access” respectively.

What's new?

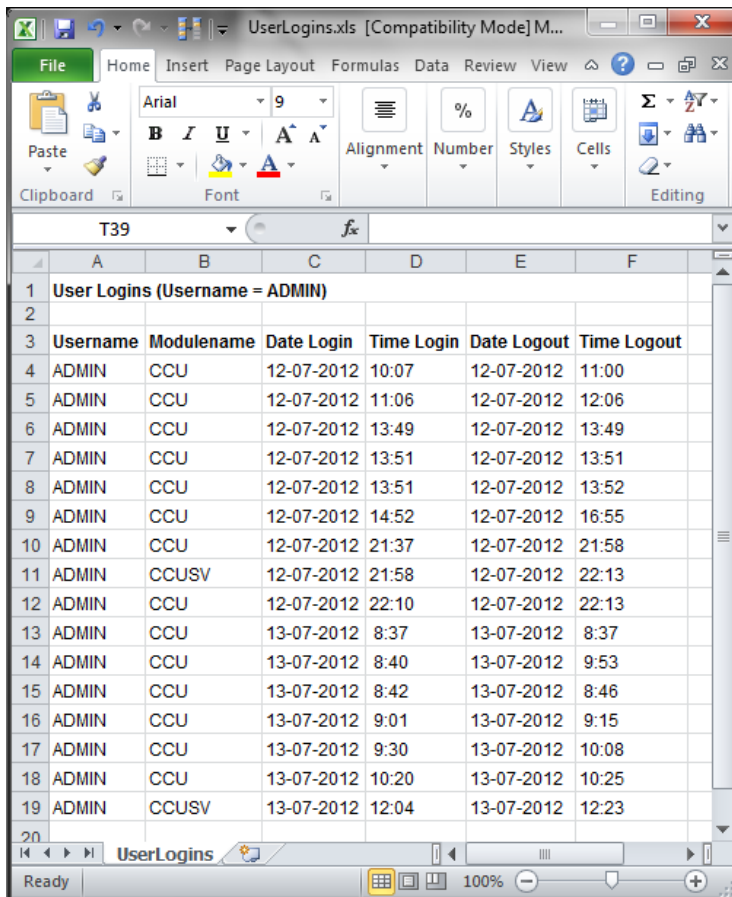
Because all the CCU modules (CCU, CCU Supervisor Module, CCU TecDoc Export Module) require a login with username and password, we now have the ability to log exactly when a user logs into or logs out of a particular module.



Username	Module Name	Date Login	Time Login	Date Logoff	Time Logoff
ADMIN	CCU	12-07-2012	10:07	12-07-2012	11:00
ADMIN	CCU	12-07-2012	11:06	12-07-2012	12:06
ADMIN	CCU	12-07-2012	13:49	12-07-2012	13:49
ADMIN	CCU	12-07-2012	13:51	12-07-2012	13:51
ADMIN	CCU	12-07-2012	13:51	12-07-2012	13:52
ADMIN	CCU	12-07-2012	14:52	12-07-2012	16:55
ADMIN	CCU	12-07-2012	21:37	12-07-2012	21:58
ADMIN	CCUSV	12-07-2012	21:58	12-07-2012	22:13
ADMIN	CCU	12-07-2012	22:10	12-07-2012	22:13
ADMIN	CCU	13-07-2012	8:37	13-07-2012	8:37
ADMIN	CCU	13-07-2012	8:40	13-07-2012	9:53
ADMIN	CCU	13-07-2012	8:42	13-07-2012	8:46
ADMIN	CCU	13-07-2012	9:01	13-07-2012	9:15
ADMIN	CCU	13-07-2012	9:30	13-07-2012	10:08
ADMIN	CCU	13-07-2012	10:20	13-07-2012	10:25
ADMIN	CCUSV	13-07-2012	12:04	13-07-2012	12:23

For interested supervisors, open up the CCU Supervisor Module and go to “Data Check”, “Display User Logging”. Here you can see a list of all login and logoffs. You can sort on any field by clicking the Header, or make a filter by filling one or more of the fields in the “Filter:”-section on top of the window and pressing “Tab” on the keyboard. You can also click the checkbox “Show only active users” to see which users are still logged in. Clicking the “Clear Filter”-button empties the filter and displays all records again.

Lastly, you can export the list (with the same sorts and filters applied on the screen) to Excel by providing an “Output file (XLS):” and clicking the “Export”-button.



	A	B	C	D	E	F
1	User Logins (Username = ADMIN)					
2						
3	Username	Modulename	Date Login	Time Login	Date Logout	Time Logout
4	ADMIN	CCU	12-07-2012	10:07	12-07-2012	11:00
5	ADMIN	CCU	12-07-2012	11:06	12-07-2012	12:06
6	ADMIN	CCU	12-07-2012	13:49	12-07-2012	13:49
7	ADMIN	CCU	12-07-2012	13:51	12-07-2012	13:51
8	ADMIN	CCU	12-07-2012	13:51	12-07-2012	13:52
9	ADMIN	CCU	12-07-2012	14:52	12-07-2012	16:55
10	ADMIN	CCU	12-07-2012	21:37	12-07-2012	21:58
11	ADMIN	CCUSV	12-07-2012	21:58	12-07-2012	22:13
12	ADMIN	CCU	12-07-2012	22:10	12-07-2012	22:13
13	ADMIN	CCU	13-07-2012	8:37	13-07-2012	8:37
14	ADMIN	CCU	13-07-2012	8:40	13-07-2012	9:53
15	ADMIN	CCU	13-07-2012	8:42	13-07-2012	8:46
16	ADMIN	CCU	13-07-2012	9:01	13-07-2012	9:15
17	ADMIN	CCU	13-07-2012	9:30	13-07-2012	10:08
18	ADMIN	CCU	13-07-2012	10:20	13-07-2012	10:25
19	ADMIN	CCUSV	13-07-2012	12:04	13-07-2012	12:23
20						

Headline Database Service bv
Headline Software Technology bv
Horsterweg 24
6199 AC Maastricht Airport
The Netherlands
Tel.: +31 (0)43 36 50 212
Fax: +31 (0)43 36 50 125
Internet: www.headlineweb.nl
E-mail: info@headlineweb.nl