

## What's new in this edition

Our CCU software is constantly evolving. Last few months we have been busy to improve the CCU software and expand it with new modules & functionality. The highlights are:

- The Article Status for multiple articles can now be easily changed in CCU without the need for importing an import file in the CCU Supervisor Module.
- It is now possible to use the update, delete and insert buttons when in Quick View mode on the *Changing application* screen.
- In CCU you can export an overview of all the article and application attributes (including how many times an attribute or value is used) in Excel. In addition, it is also possible to export an overview of all the attribute tables and attribute value tables.
- We added the functionality to add a website link (URL) as an article attribute.
- A quick overview of the application specifications has been added to the *Changing application* screen.

Furthermore we get a lot of questions from customers regarding the difference between the VIO total on the Vehicle level in the applications sheet and the VIO total in the VIO sheet. With the help of an example we hope to clarify this matter.

## Easy Article Status Change functionality

In CCU we added the functionality to easily change articles statuses for multiple articles. To activate this functionality please log into the CCU Supervisor Module and navigate to *Internal tables* and click the option *Users*. Then click the button *[Change]*. The *Change user* screen opens. Select the tab *Autorisation*. Please check the box *Bulk Status Update* to activate this functionality for this user. Also see the red lining in *Figure 1: Activate Bulk Status update*.

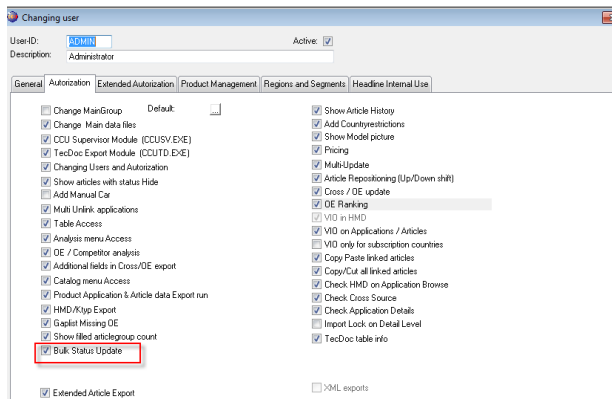


Figure 1: Activate Bulk Status update

In CCU a new menu item *Bulk Article Status Change* will appear under the *Program* menu. Also see the red lining in *Figure 2: Select Bulk Article Status Change*.

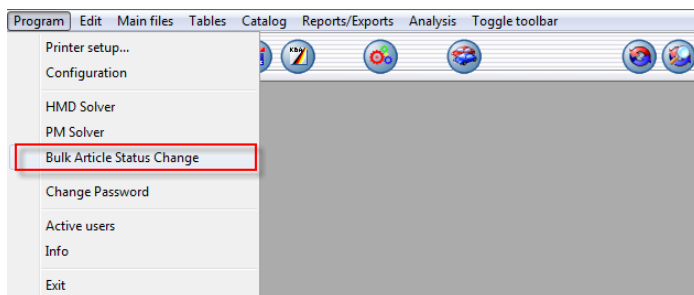


Figure 2: Select Bulk Article Status Change

To use this new functionality please insert or paste the article numbers from MS Excel you want to change the status for (1). Then set the new *Article Status* for these articles (2). Click *Start* to change the status for these articles (3). Also see the red linings in *Figure 3: Using the Article Status change functionality*

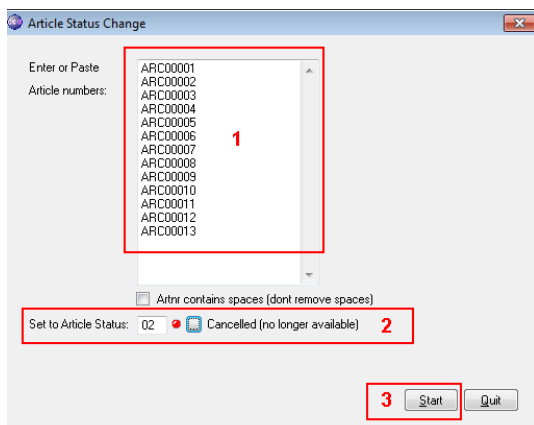


Figure 3: Using the Article Status change functionality

If your article numbers contain errors the following error will pop-up. Also see *Figure 4: Error pop-up*.

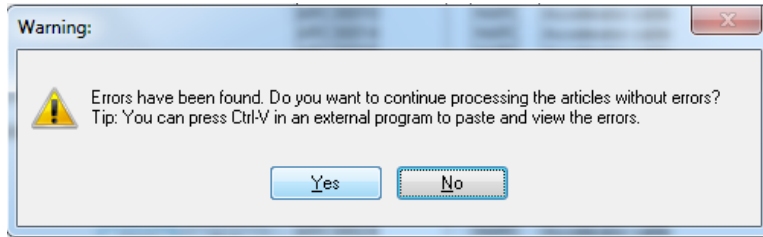


Figure 4: Error pop-up

Press the [Yes] button to continue. You can paste the errors in Excel to view the errors in detail. Also see *Figure 5: Error report*.

	A	B	C	D	E	F	G	H	I	J
1	ArtNr	Arg	Descr.	Sts	Descr.	Error				
2	ARC00011	-	-	-	-	Articlenumber doesn't exist !				
3	ARC00012	-	-	-	-	Articlenumber doesn't exist !				
4	ARC00013	-	-	-	-	Articlenumber doesn't exist !				
5										
6										

Figure 5: Error report

If all went correctly the validated values will have a new article status. Also see *Figure 6: Article Status changed*.

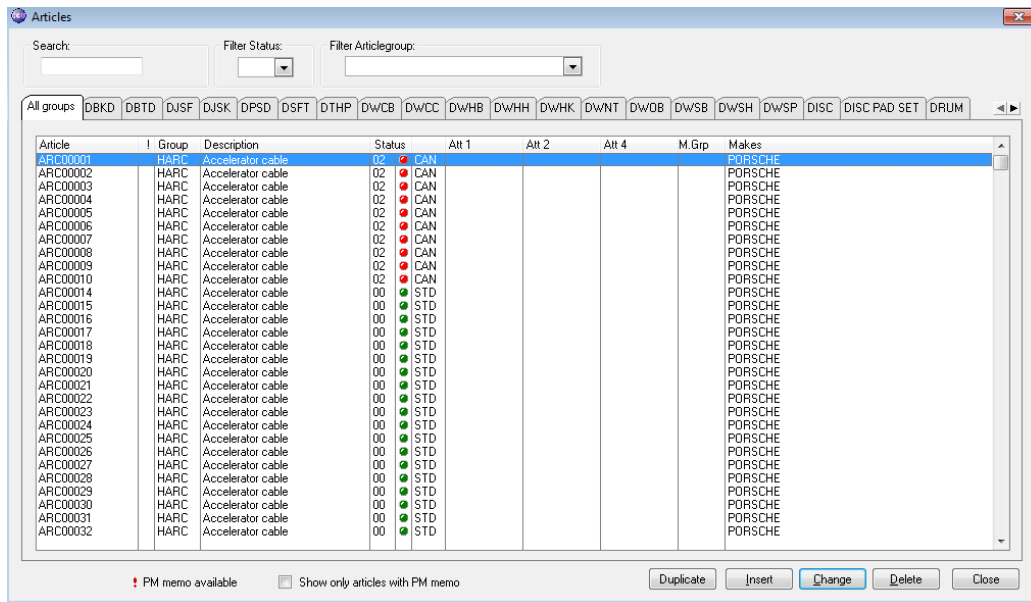


Figure 6: Article Status changed

## Export overview of Article and Application Attributes

In CCU it is now possible to export an overview of all the article and application attributes. It is even possible to see how often an *Attribute* or even a *Value* is used in CCU. To export this overview please log into CCU and navigate to *Reports/Exports > Export tables* and click on the option *ADA/AAA tables*. Also see the red lining in *Figure 7: Select ADA/AAA tables*.

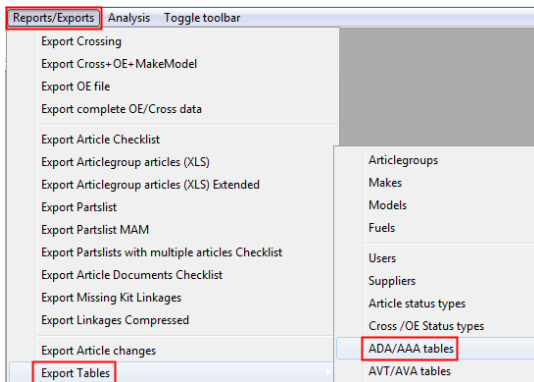


Figure 7: Select ADA/AAA tables

You can select for which article groups you want to export the Attributes and if you want it presented in a horizontal or vertical layout. For the vertical layout you can also select an option to show the number of attributes and/or corresponding values for the selected article groups. Also see *Figure 8: Export Attributes*.

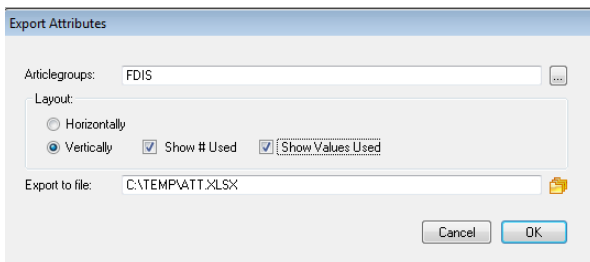


Figure 8: Export Attributes

In the example below you see a preview of the Export Attributes with a vertical layout and with the option *Show # Used* and *Show Values Used* checked. Also see *Figure 9: Export Attributes output*.

	A	B	C	D	E	F	G	H	I	J	K	L	M	N	O	P
1	Articlegroup	Articlegroup	Headarticlegroup	Headarticlegroup desc	Attribute type	Attribute n	Attribute description	Alternate description	Picture	Table	ID crit	Active	Immediate	Prefix	Postfix	# used
2	FDIS	Disc	BRH	Braking & Hydraulics	Application Attrib_1	Years fromto	@d13b				0	1	0			8187
3	FDIS	Disc	BRH	Braking & Hydraulics	Application Attrib_2	Alt Version	Alt Version	@s5			1059	1	0			0
4	FDIS	Disc	BRH	Braking & Hydraulics	Application Attrib_3	Wheel Hub Diam	Wheel Hub Diam	@n_5.1b			813	1	0			16
5	FDIS	Disc	BRH	Braking & Hydraulics	Application Attrib_4	Brake Type	Brake Type	@s5	HBRT		0	1	0			189
6																
7							HBRT	CERAN	For vehicles without c CERAN			1				51
8							HBRT	CERAY	For vehicles with cerc CERAY			1				110
9							HBRT	DRUB	For vehicles with drur DRUB			1				14
10							HBRT	DSCB	For vehicles with disc DSCB			1				14
11	FDIS	Disc	BRH	Braking & Hydraulics	Application Attrib_5	Eco Technology	Eco Technology	@s5	HECO		0	1	0			2
12																
13	FDIS	Disc	BRH	Braking & Hydraulics	Application Attrib_6	Wheelbase	Wheelbase	@s5	FWHB		0	1	0			311
14																
15							FWHB	CEWB	Centre Wheelbase			1				26
16							FWHB	EWBN	Not for Extended Whe NEWB			1				8
17							FWHB	EWBY	For Extended Wheelbase EWB			1				8
18							FWHB	LWB	Long Wheelbase	LWB	LWB	1				120
19							FWHB	SWB	Short Wheelbase	SWB	SWB	1				149
20	FDIS	Disc	BRH	Braking & Hydraulics	Application Attrib_7	Position	Position	@s5	FPLRH		0	1	0			2589
							FPLRH	LE	Left	LH	Left	1				1296
							FPLRH	RI	Right	RH	Right	1				1293

Figure 9: Export Attributes output

## Export overview of Attributes tables

In addition to the article and application attributes export you can also generate an overview of all the attributes (AVA) and attribute value (AVT) tables. To export this overview please log into the CCU and navigate to *Reports/Exports > Export tables* and click on the option *AVT/AVA tables*. Also see the red lining in *Figure 10: Select AVT/AVA tables*.

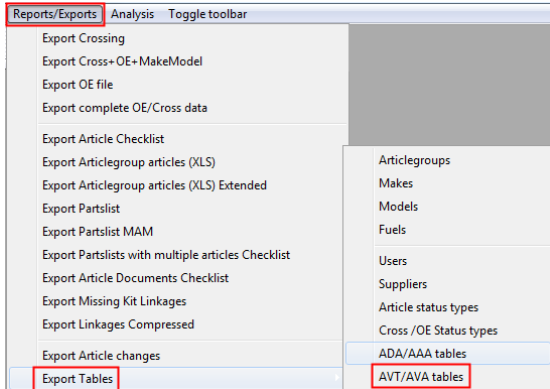


Figure 10: Select AVT/AVA tables

Select a location to save the file to. Also see *Figure 11: Export Attribute Tables*.

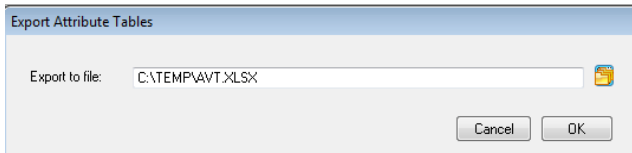


Figure 11: Export Attribute Tables

In the example below you see a preview of the Attributes tables file. Also see *Figure 12: Export Attributes Tables output*.

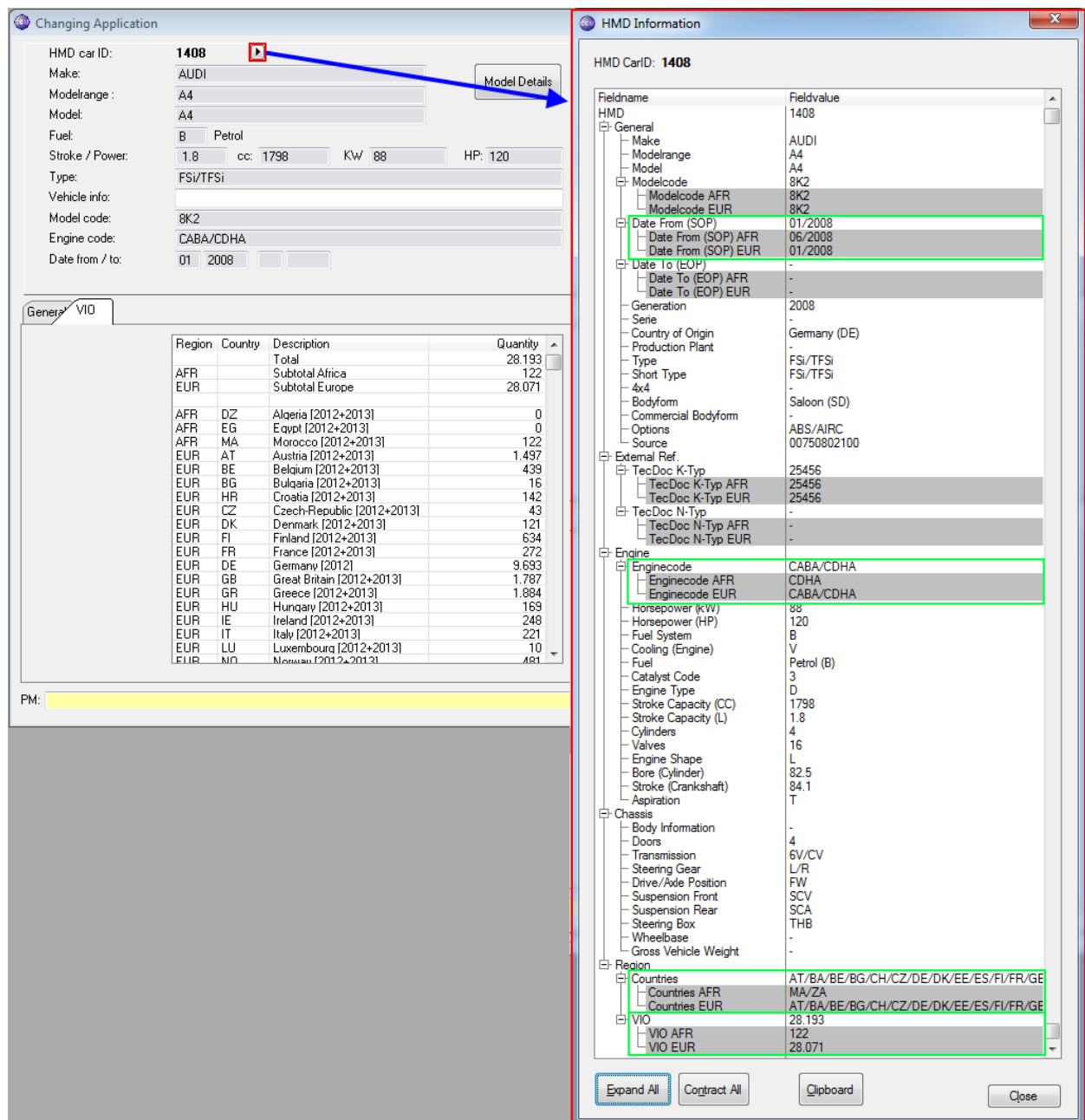
1	Table	Value	Description	Catalog Co	Shorty	TecDoc Value 1	TecDoc Va	TecDoc Va	TecDoc Va	TecDoc Va	TecDoc Va	TecDoc Va	TecDoc Va	TecDoc Va	TecDoc Va	TecDoc Va	TecDoc Va	TecDoc Va	TecDoc Va	TecDoc Va	TecDoc Im	E-mail	Active		
1194	HCLUT	Clutch	Clutch		@s5	620																0,0,0,0,0,0	0		
1195		HCAN	For vehicle:Hydr. Clutch	HCAN		053																		1	
1196		HCAY	For vehicle:Hydr. Clutch	HCAY		003																		1	
1197	HCNS	Connector	Connector	Connector	@s5	902																0,0,0,0,0,0	1		
1198		OVL	Oval	Oval	OVL	2																		1	
1199		ROUND	Round	Round	ROUND	0																		1	
1200	HCON	Clutch Con	Clutch Constr.		@s5																	0,0,0,0,0,0	1		
1201		SACN	Not for self SAC(-)	SACN																				1	
1202		SACY	For self adj SAC(+)	SACY																				1	
1203	HCON1	Caliper Cor	Caliper Cor	Caliper Cor	@s5	232																0,0,0,0,0,0	1		
1204		DPER	Use with P/Perforated	DPER		002																		1	
1205		DPERV	Use with P/Perforated	DPERV		004																		1	
1206		DSLO	Use with SI Slotted Dis	DSLO		005																		1	
1207		DSLOIV	Use with SI Slotted/Int	DSLOIV		009																		1	
1208		DSLOV	Use with SI Slotted/Per	DSLOV		006																		1	
1209		DSOL	Use with SI Solid Disc	DSOL		001																		1	
1210		DVEN	Use with V/Vented Dis	DVEN		008																		1	
1211	HCOU1	Country Ve	Country Version		@s5	711	711	711	711	711	711	711	711	711	711	711	711	711	711	711	711	1,1,1,1,1,1	0	1	
1212		AABCSTY	CL, AU, BR, CL, AU, BR,	1CLARY		054	039	033	055	045	012													1	
1213		ABCCY	CL, AU, BR, CL, AU, BR	CLCHY		054	039	033	036															1	
1214		ABCCZY	CL, AU, BR, CL, AU, BR	CLSAY		054	043	033	036	056														1	
1215		ABCISTZY	AU, BR, CL, AU, BR, CL,	AUTWY		039	033	054	055	053	056	045												1	

Figure 12: Export Attributes Tables output

## New pop up screen with HMD information

It's now possible view a summary of the application details, listed in a summary, in the screen with the title *Changing Application*. This is very useful if you want to get a quick overview of the specifications of the application.

To use this functionality you have to search & open (change) an application. When you're in the screen *Changing Application*, click on the arrow button behind the field *HMD car ID* (▶). A pop up screen with the title *HMD Information* opens. Also see the red lining in *Figure 13: HMD Information*.



**Changing Application**

HMD car ID: 1408 ▶

Make: AUDI

Modelrange: A4

Model: A4

Fuel: B Petrol

Stroke / Power: 1.8 cc: 1798 KW 88 HP: 120

Type: FSI/TFSI

Vehicle info:

Model code: 8K2

Engine code: CABA/CDHA

Date from / to: 01 2008

Model Details

Region	Country	Description	Quantity
		Total	28.193
AFR		Subtotal Africa	122
EUR		Subtotal Europe	28.071
AFR	DZ	Algeria [2012+2013]	0
AFR	EG	Egypt [2012+2013]	0
AFR	MA	Morocco [2012+2013]	122
EUR	AT	Austria [2012+2013]	1.497
EUR	BE	Belgium [2012+2013]	439
EUR	BG	Bulgaria [2012+2013]	16
EUR	HR	Croatia [2012+2013]	142
EUR	CZ	Czech-Republic [2012+2013]	43
EUR	DK	Denmark [2012+2013]	121
EUR	FI	Finland [2012+2013]	634
EUR	FR	France [2012+2013]	272
EUR	DE	Germany [2012]	9.693
EUR	GB	Great Britain [2012+2013]	1.787
EUR	GR	Greece [2012+2013]	1.884
EUR	HU	Hungary [2012+2013]	169
EUR	IE	Ireland [2012+2013]	248
EUR	IT	Italy [2012+2013]	221
EUR	LU	Luxembourg [2012+2013]	10
EUR	MD	Moldova [2012+2013]	481

PM: \_\_\_\_\_

**HMD Information**

HMD CarID: 1408

Fieldname	Fieldvalue
HMD	1408
General	
Make	AUDI
Modelrange	A4
Model	A4
Modelcode	8K2
Modelcode AFR	8K2
Modelcode EUR	8K2
Date From (SOP)	01/2008
Date From (SOP) AFR	06/2008
Date From (SOP) EUR	01/2008
Date To (EOP)	-
Date To (EOP) AFR	-
Date To (EOP) EUR	-
Generation	2008
Serie	-
Country of Origin	Germany (DE)
Production Plant	-
Type	FSI/TFSI
Short Type	FSI/TFSI
4x4	-
Bodyform	Saloon (SD)
Commercial Bodyform	-
Options	ABS/AIRC
Sources	00750802100
External Ref.	
Tec.Doc K-Typ	25456
Tec.Doc K-Typ AFR	25456
Tec.Doc K-Typ EUR	25456
Tec.Doc N-Typ	-
Tec.Doc N-Typ AFR	-
Tec.Doc N-Typ EUR	-
Engine	
Enginecode	CABA/CDHA
Enginecode AFR	CDHA
Enginecode EUR	CABA/CDHA
Horsepower (KW)	88
Horsepower (HP)	120
Fuel System	B
Cooling (Engine)	V
Fuel	Petrol (B)
Catalyst Code	3
Engine Type	D
Stroke Capacity (CC)	1798
Stroke Capacity (L)	1.8
Cylinders	4
Valves	16
Engine Shape	L
Bore (Cylinder)	82.5
Stroke (Crankshaft)	84.1
Aspiration	T
Chassis	
Body Information	-
Doors	4
Transmission	6V/CV
Steering Gear	L/R
Drive/Axle Position	FW
Suspension Front	SCV
Suspension Rear	SCA
Steering Box	THB
Wheelbase	-
Gross Vehicle Weight	-
Region	
Countries	AT/BA/BE/BG/CH/CZ/DE/DK/EE/ES/FI/FR/GE
Countries AFR	MA/ZA
Countries EUR	AT/BA/BE/BG/CH/CZ/DE/DK/EE/ES/FI/FR/GE
VIO	28.193
VIO AFR	122
VIO EUR	28.071

Expand All Contract All Clipboard Close

Figure 13: HMD Information

In the *HMD Information* screen values for different regions, for example Africa & Europe, are shown with a grey background. In this manner it's easy to see differences for regions. Also see the green lining in *Figure 13: HMD Information*.

## Zoom option for Context Sensitive Graphics

New in CCU is the zoom option for Context Sensitive Graphics. It's possible to magnify 1, 2 or 4 times in the *Context Sensitive Graphics* screen.

To use this function in CCU follow the steps below.

1. Open a desired article.
2. Navigate to the tab *Parts List*.
3. Click the button [*Context Sensitive Graphics*].  
The pop up screen with the title *Update Context Sensitive Graphics for article* opens.
4. On the right (lower) part of the pop up screen you can select the desired zoom level by clicking on one of the bullet point. Also see the red lining in *Figure 14: Context Sensitive Graphics - Zoom*.

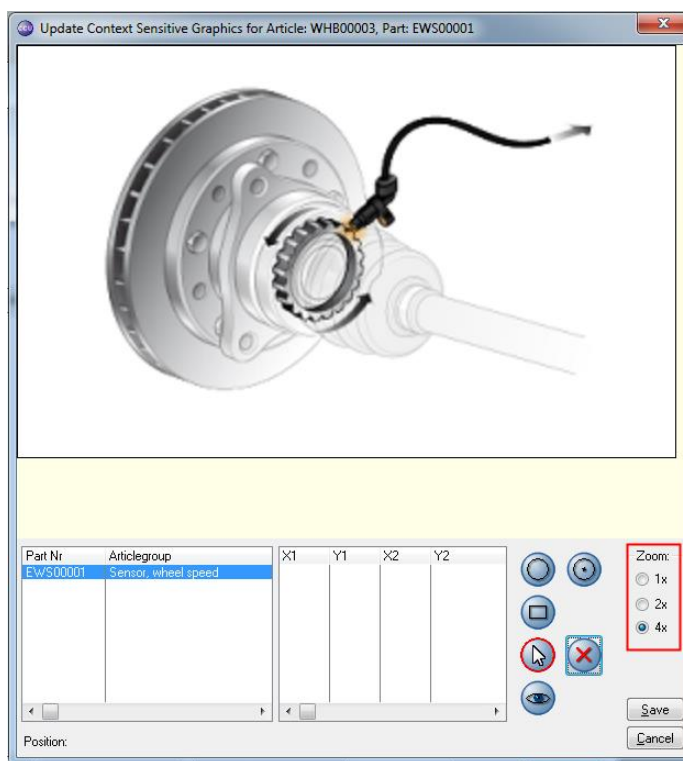


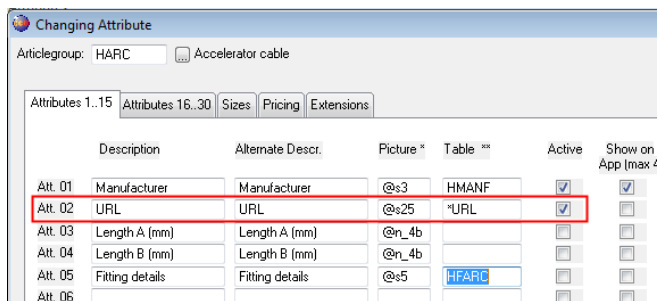
Figure 14: Context Sensitive Graphics - Zoom

**Note:** To use the Context Sensitive Graphics functionality in CCU, it has to be activated first in the CCU Supervisor module. To do this, please refer to the CCU & CCU Supervisor manuals.

## Use article attributes as website link

It's now possible to add website links as an attribute to articles.

To activate this functionality you have to add an attribute with the parameter *\*URL* in the *Table \*\** field in the screen *Changing Attribute* for Article Attributes in the CCU Supervisor Module. Also see the red lining in *Figure 15: Add Attribute URL to Article*.

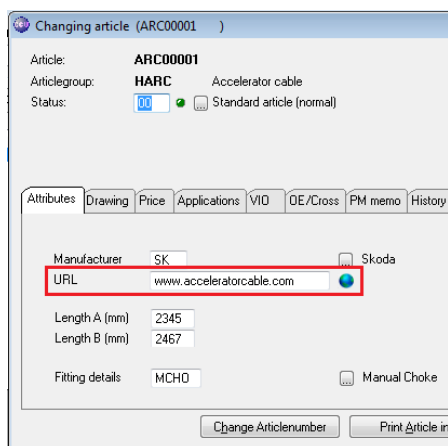


Att.	Description	Alternate Descr.	Picture *	Table **	Active	Show on App (max 4)
Att. 01	Manufacturer	Manufacturer	@s3	HMANF	<input checked="" type="checkbox"/>	<input checked="" type="checkbox"/>
Att. 02	URL	URL	@s25	*URL	<input checked="" type="checkbox"/>	<input type="checkbox"/>
Att. 03	Length A (mm)	Length A (mm)	@n_4b		<input type="checkbox"/>	<input type="checkbox"/>
Att. 04	Length B (mm)	Length B (mm)	@n_4b		<input type="checkbox"/>	<input type="checkbox"/>
Att. 05	Fitting details	Fitting details	@s5	HIFARC	<input type="checkbox"/>	<input type="checkbox"/>
Att. 06					<input type="checkbox"/>	<input type="checkbox"/>

Figure 15: Add Attribute URL to Article

To use this functionality, open or change an article and then go to the *Attributes* tab in the *Changing article ()* screen. After setting an attribute with the parameter *\*URL* in the *Table \*\** field in the CCU Supervisor module, it's possible to fill an URL in the *URL* field. Also see the red lining in *Figure 16: Connect URL to an article*.

To open the *URL* in a web browser, simply click on the globe icon after the *URL* field.



Changing article (ARC00001)


Article: **ARC00001**

Articlegroup: **HARC** Accelerator cable

Status:   Standard article (normal)

Attributes | Drawing | Price | Applications | VIO | OE/Cross | PM memo | History

Manufacturer:   Skoda

URL:  

Length A (mm):

Length B (mm):

Fitting details:   Manual Choke

Figure 16: Connect URL to an article



## Enable UID buttons when Quick View

It's now possible to insert, delete or update articles in the Quick View mode in the *Changing Application* screen. Also see the red lining in *Figure 17: Insert, Delete & Change buttons*.

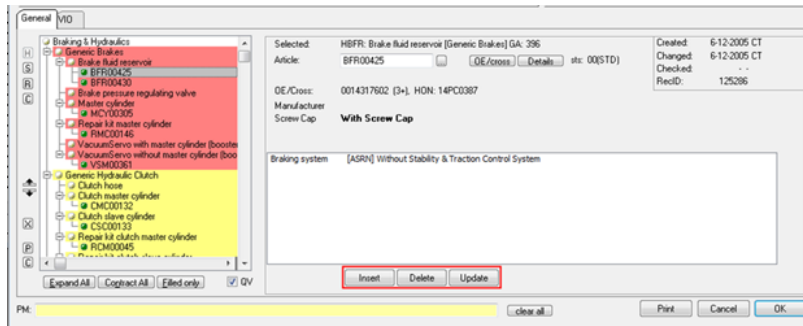


Figure 17: Insert, Delete & Change buttons

To activate this functionality check the *Enable Update/Insert/Delete buttons when QuickView* checkbox in the *Options* tab in the *Update Configuration* screen in the CCU Supervisor Module. Also see the red lining in *Figure 18: Enable UID buttons when QuickView*.

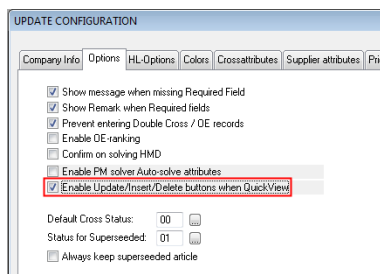


Figure 18: Enable UID buttons when QuickView

To use this functionality, open/change an application and follow the steps below to:

### Insert a new article;

1. Select an article group in the article group diagram in the left lower part of the screen;
2. Select an article by;
  - a. Entering the article number in the textbox *Article:* and pressing the *[Tab]* button;
  - b. Clicking on the *[...]* button behind the field *Article:* and searching and selecting the desired article;
3. Click on the *[Insert]* button under the Quick View box;

### Delete an existing article;

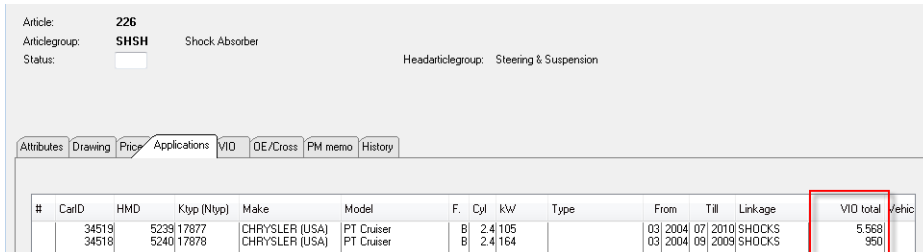
1. Select an article in the article group diagram in the left lower part of the screen;
2. Click on the *[Delete]* button under the Quick View box;

### Update an existing article;

1. Select an article in the article group diagram in the left lower part of the screen, where there is information in the information box on the right lower part of the screen;
2. Click on the information in the information box;  
The Quick View will switch to the normal view in the right lower part of the screen;
3. Change the desired attribute;
4. Click on the *[Update]* button to update the information;  
The article is updated and the right lower part of the screen switches back to Quick View mode;

## Difference between VIO on Vehicle level and the VIO (Calculated potential SALES) on Article Level

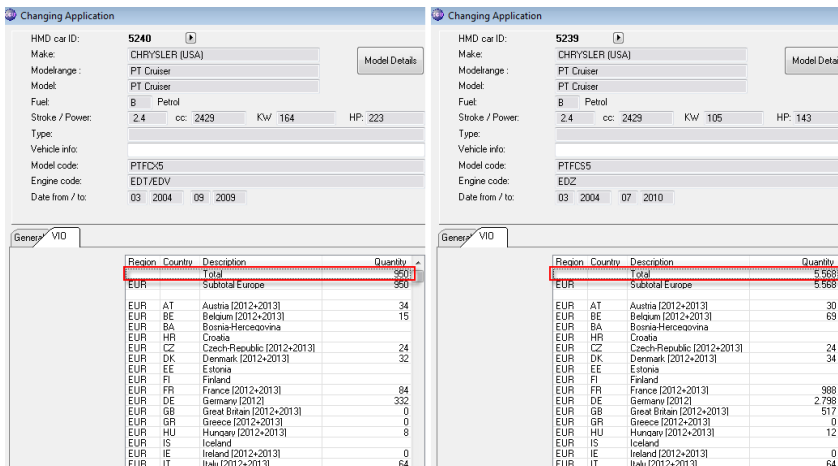
We get a lot of questions from customers why the VIO on Article level is different than on vehicle level. The VIO total shown on the application sheet in the *Changing article* screens are the absolute VIO totals of the vehicle. In the example below you can see that HMD 5239 has a VIO total of 5568 and HMD 5240 has a VIO total of 950. Also see the red lining in *Figure 19: VIO totals for article 226*.



#	CarID	HMD	Ktyp (Ntyp)	Make	Model	F	Cyl	kW	Type	From	Till	Linkage	VIO total	Vehic
	34519	5239	17877	CHRYSLER (USA)	PT Cruiser	B	2.4	105		03/2004	07/2010	SHOCKS	5.568	
	34518	5240	17878	CHRYSLER (USA)	PT Cruiser	B	2.4	164		03/2004	09/2009	SHOCKS	950	

Figure 19: VIO totals for article 226

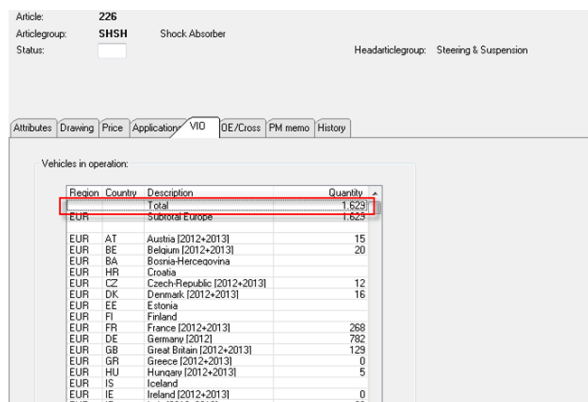
The VIO total on the Changing Application screen is the same VIO total number that is shown on the Applications sheet in the changing article screen. Also see the red linings in *Figure 20: VIO totals for HMD 5240 & 5239*.



Region	Country	Description	Quantity
Total			950
Subtotal Europe			950
EUR	AT	Austria (2012+2013)	34
EUR	BE	Belgium (2012+2013)	15
EUR	BA	Bosnia-Herzegovina	
EUR	HR	Croatia	
EUR	CZ	Czech Republic (2012+2013)	24
EUR	DK	Denmark (2012+2013)	32
EUR	EE	Estonia	
EUR	FI	Finland	
EUR	FR	France (2012+2013)	84
EUR	DE	Germany (2012)	332
EUR	GB	Great Britain (2012+2013)	0
EUR	GR	Greece (2012+2013)	0
EUR	HU	Hungary (2012+2013)	8
EUR	IS	Iceland	
EUR	IE	Ireland (2012+2013)	0
EUR	IT	Italy (2012+2013)	64

Figure 20: VIO totals for HMD 5240 & 5239

The VIO total shown on the VIO sheet in the *Changing article* screen are the calculated potential sales for this article. Also see the red lining in *Figure 21: Changing article - VIO tab*



Region	Country	Description	Quantity
Total			1.623
Subtotal Europe			1.623
EUR	AT	Austria (2012+2013)	15
EUR	BE	Belgium (2012+2013)	20
EUR	BA	Bosnia-Herzegovina	
EUR	HR	Croatia	
EUR	CZ	Czech Republic (2012+2013)	12
EUR	DK	Denmark (2012+2013)	16
EUR	EE	Estonia	
EUR	FI	Finland	
EUR	FR	France (2012+2013)	268
EUR	DE	Germany (2012)	782
EUR	GB	Great Britain (2012+2013)	129
EUR	GR	Greece (2012+2013)	0
EUR	HU	Hungary (2012+2013)	5
EUR	IS	Iceland	
EUR	IE	Ireland (2012+2013)	0
EUR	IT	Italy (2012+2013)	32

Figure 21: Changing article - VIO tab

How are the calculated potential sales being calculated?

To answer that question, first check the *Application Attributes VIO spread* in the CCU Supervisor Module for the desired article group. Please log into the CCU Supervisor and navigate to *Internal tables* and select the option *Application Attributes VIO spread*. Also see the red lining in *Figure 22: Application Attributes VIO spread*.

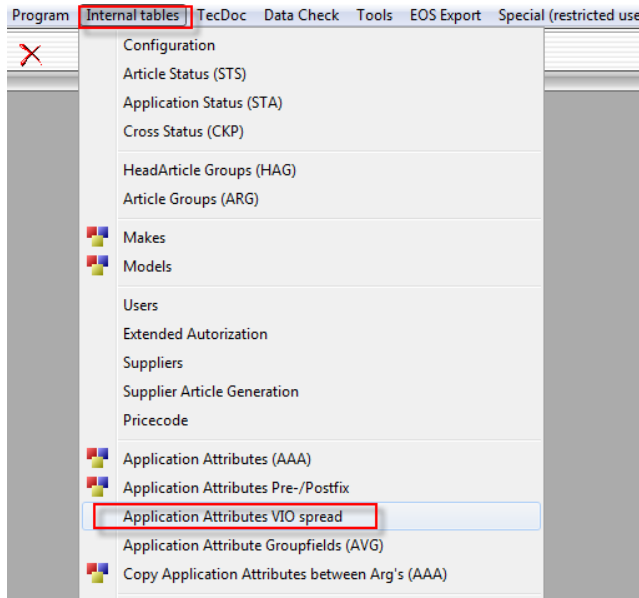


Figure 22: Application Attributes VIO spread

Select the appropriate product group and the *Changing Attribute VIO spread* screen will appear. Also see *Figure 23: Changing Attribute VIO spread*. In this screen you can configure which application attributes will be used to calculate the potential sales numbers. Check the box behind an Application Attribute to divide the VIO spread by 2 when the attribute is being used.

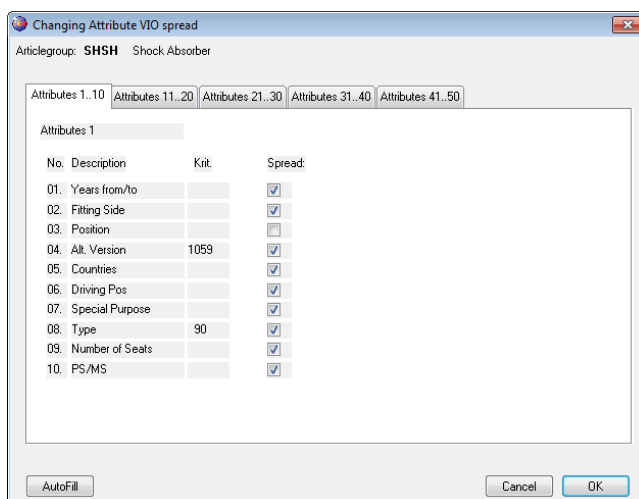


Figure 23: Changing Attribute VIO spread

In the example below article 226 belonging to HMD 5239 there are 3 application attributes filled in. The first 2 attributes (*Years from/to* and *Fitting Side*) have a VIO spread defined in the CCU Supervisor Module for the article group. For the attribute *Position* no VIO spread was defined. Also see *Figure 24: VIO spread attributes HMD 5239*.

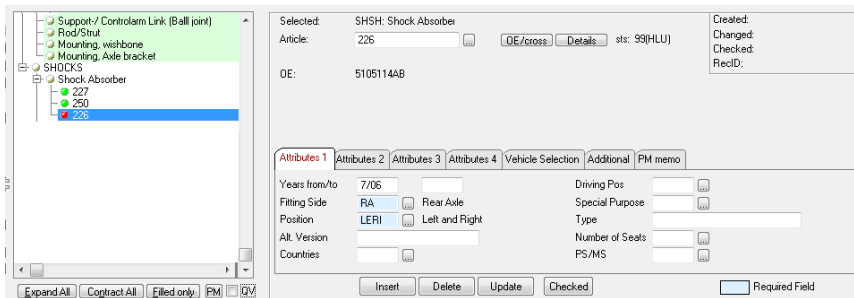


Figure 24: VIO spread attributes HMD 5239

For article 226 belonging to HMD 5240 there are 2 application attributes filled in. The attributes *Years from/to* and *Fitting Side* have a VIO spread defined in the CCU Supervisor Module for this article group. Also see *Figure 25: VIO spread attributes HMD 5240*.

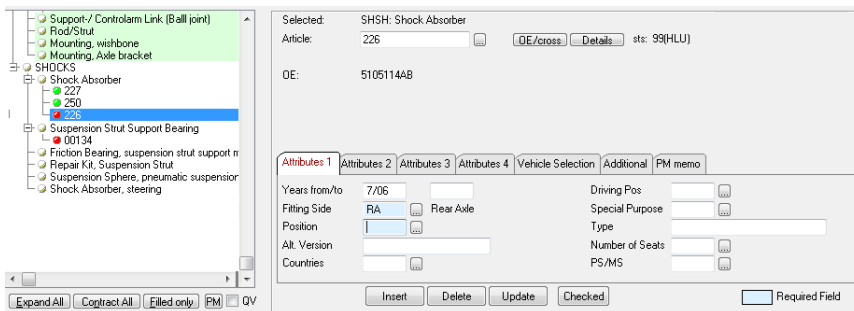
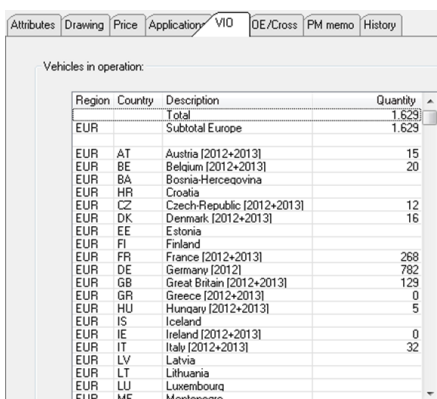


Figure 25: VIO spread attributes HMD 5240

How is the calculation for article 226 being done?

- Article 226 belonging to HMD 5239 has 3 application attributes filled in of which 2 have a VIO spread defined in the CCU Supervisor Module. Each used application attribute with a defined VIO Spread will divide the total VIO of a Vehicle by 2. The calculation will be:  $5568 / (2+2+0) = 1392$ .
- Article 226 belonging to HMD 5240 has 2 application attributes filled in of which 2 have a VIO spread defined in the CCU Supervisor Module. The calculation will be:  $950 / (2+2) = 237.5$ . Whereby the number will be rounded down to 237.

The sum of both (1302+237) makes 1629. Please note there can be small rounding differences. Also see *Figure 26: Total VIO spread*.



Region	Country	Description	Quantity
		Total	1.629
		Subtotal Europe	1.629
EUR	AT	Austria [2012+2013]	15
EUR	BE	Belgium [2012+2013]	20
EUR	BA	Bosnia+Herzegovina	
EUR	HR	Croatia	
EUR	CZ	Czech-Republic [2012+2013]	12
EUR	DK	Denmark [2012+2013]	16
EUR	EE	Estonia	
EUR	FI	Finland	
EUR	FR	France [2012+2013]	268
EUR	DE	Germany [2012]	782
EUR	GB	Great Britain [2012+2013]	123
EUR	GR	Greece [2012+2013]	0
EUR	HU	Hungary [2012+2013]	5
EUR	IS	Iceland	
EUR	IE	Ireland [2012+2013]	0
EUR	IT	Italy [2012+2013]	32
EUR	LV	Latvia	
EUR	LT	Lithuania	
EUR	LU	Luxembourg	
EUR	ME	Montenegro	

Figure 26: Total VIO spread

## Change log

For a full list of changes, in addition to the ones outlined in this document, please review the change log below. If you have any questions about the change log please contact Headline Helpdesk for more information.

TYPE	DESCRIPTION
FIX	: Applications sort on article screen is retained after update
FIX	: ArticleAttributes check for attributes > 50
FIX	: Compressed linkages in compressed catalog run
FIX	: Resize / move for strip drawings
FIX	: TecDoc dates for vehicles
FIX	: Selecting a car with Multi-Select sometimes went wrong
FIX	: Create/Change/Check dates when duplicating article
FIX	: Tab scroll when oversized on article level
FIX	: Authorization for model picture view
FIX	: Reset Screen positions when moved out of screen
FIX	: Search sequence for model pictures
FIX	: Supplier required when adding Cross/OE
ADDED	: TecDoc date shows selected Ktyp dates when 'For Ktyp' is used
ADDED	: VIO Total selection on extended article export
ADDED	: Additional fields for importing Cross
ADDED	: Checklist dates for TecDoc construction date
ADDED	: Transmission on Gap Analysis
ADDED	: Article status in select article by OE screen
ADDED	: Configuration for main message background color
ADDED	: Export tables AAA / ADA
ADDED	: New popup screen with HMD info
ADDED	: Zoom option for Context Sensitive Graphics
ADDED	: Bulk Article Status Change
ADDED	: Export tables AVT / AVA
ADDED	: Icon for Main group dependent options in supervisor menu
ADDED	: Search on extended User Sheet attributes
ADDED	: Use article-attributes as website link
ADDED	: Enable UID buttons when Quick View
CHANGED	: DAT file import tool changed for TAF version 2.2a
CHANGED	: Sort order of cross/OE numbers on article screen
CHANGED	: Range Extension Report
CHANGED	: Status Mail new status in subject
CHANGED	: Export AAA/ADA to SQL moved to Tools menu

**Headline Database Service BV**  
**Headline Software Technology BV**  
Horsterweg 24  
6199 AC Maastricht Airport  
The Netherlands  
Tel.: +31 (0)43 36 50 212  
Fax: +31 (0)43 36 50 125  
Internet: [www.headlineweb.nl](http://www.headlineweb.nl)  
E-mail: [info@headlineweb.nl](mailto:info@headlineweb.nl)