

What's new in this edition

Thanks to the feedback of our customers, CCU has further improved since the last CCU-version. Along with general improvements in features and bug fixes we picked the best suggestions and incorporated them in the CCU software for all our customers. The main changes from last quarter include:

- It's now possible to export all article numbers linked to HMD's or K-Typs within a specific article group through the [Export Linkages Compressed](#).
- In the Context Sensitive Graphics pop-up-screen it's now possible to [Specify zoom in Context Sensitive Graphics](#) when right-clicking the opened image.
- The [Labels in pop-up-window Update Supersessions](#) have changed
- The car information of reports has been improved, so more information is shown. Also see [Grouping of the header in Report Preview](#).
- Now you can export the Model information when a HMD number is linked to multiple Ktyp numbers via the [TecDoc Export improvements](#).

Export Linkages Compressed

There is a new functionality in CCU to export all article numbers that are linked to HMD's or to K-Typ's within a specific article group. This functionality is called Export Linkages Compressed and can be opened in CCU through the menu option *Reports/Export > Export Linkages Compressed*. After clicking this menu option, the pop-up-window *Export Linkages Compressed* opens. Also see *Figure 1: Open Export Linkages Compressed*.

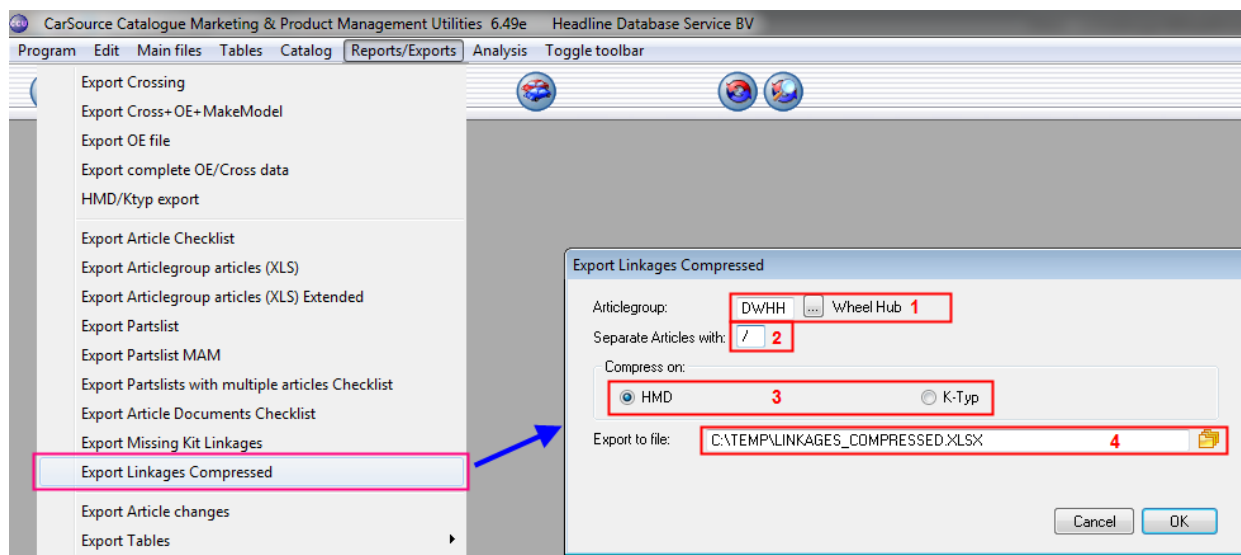


Figure 1: Open Export Linkages Compressed

In the *Export Linkages Compressed* it's possible to select a desired *Articlegroup*: (1), define a separator (2) to use for separating the articles in the export file. It's possible to choose the sort order of the exported articles by choosing between HMD & K-Typ compression in the field *Compress on*: (3). After setting the location (4), the export can be started by clicking [OK].

After the export has finished, a new pop-up-window appears with the title *Excel Output*. Here you can choose to continue by clicking the [OK] button and close the pop-up-window or it's possible to directly open the export file by clicking the button [Open with Excel]. Also see *Figure 2: Excel Outputs Export Linkages Compressed (left compressed on HMD, right compressed on K-Typ)* for the output formats. The black separator line is just to illustrate the differences in output format but will not be shown.

	A	B	C	D	E	F	G		A	B	C	D	E	F
1	HMD cardID	K-Typ	Level	Level Description	Articlegroup	Articlegroup Description	Articlenumbers	1	K-Typ	Level	Level Description	Articlegroup	Articlegroup Description	Articlenumbers
2	132	7770	DW	Wheel Bearings	DWHH	Wheel Hub	WHH00076	2	1	DW	Wheel Bearings	DWHH	Wheel Hub	WHH00743
3	133	9503	DW	Wheel Bearings	DWHH	Wheel Hub	WHH00076	3	3	DW	Wheel Bearings	DWHH	Wheel Hub	WHH00485
4	134	5159	DW	Wheel Bearings	DWHH	Wheel Hub	WHH00076	4	25	DW	Wheel Bearings	DWHH	Wheel Hub	WHH00484
5	135	9505	DW	Wheel Bearings	DWHH	Wheel Hub	WHH00076	5	26	DW	Wheel Bearings	DWHH	Wheel Hub	WHH00764
6	136	3822	DW	Wheel Bearings	DWHH	Wheel Hub	WHH00076	6	56	DW	Wheel Bearings	DWHH	Wheel Hub	WHH00764
7	137	3823	DW	Wheel Bearings	DWHH	Wheel Hub	WHH00076	7	57	DW	Wheel Bearings	DWHH	Wheel Hub	WHH00764
8	139	7765	DW	Wheel Bearings	DWHH	Wheel Hub	WHH00076	8	58	DW	Wheel Bearings	DWHH	Wheel Hub	WHH00484
9	140	3821	DW	Wheel Bearings	DWHH	Wheel Hub	WHH00076	9	60	DW	Wheel Bearings	DWHH	Wheel Hub	WHH00825
10	141	11899	DW	Wheel Bearings	DWHH	Wheel Hub	WHH00078	10	66	DW	Wheel Bearings	DWHH	Wheel Hub	WHH00825

Figure 2: Excel Outputs Export Linkages Compressed (left compressed on HMD, right compressed on K-Typ)

Specify zoom in Context Sensitive Graphics

It's now possible to specify a desired zoom level for the opened image in the pop-up-window *Update Context Sensitive Graphics for Article*: when right clicking in an area of the opened image. After this a pop-up-window opens where it's possible to select the following zoom levels: 1x, 1.5x, 2x, 2.5x, 3x, 3.5x & 4x.

When clicking the desired zoom level, the image is increased / reduced to the selected zoom level & the pop-up-window *Update Context Sensitive Graphics for Article*: is increased / reduced to fit the image. Also see *Figure 3: Zoom function in CSG*.

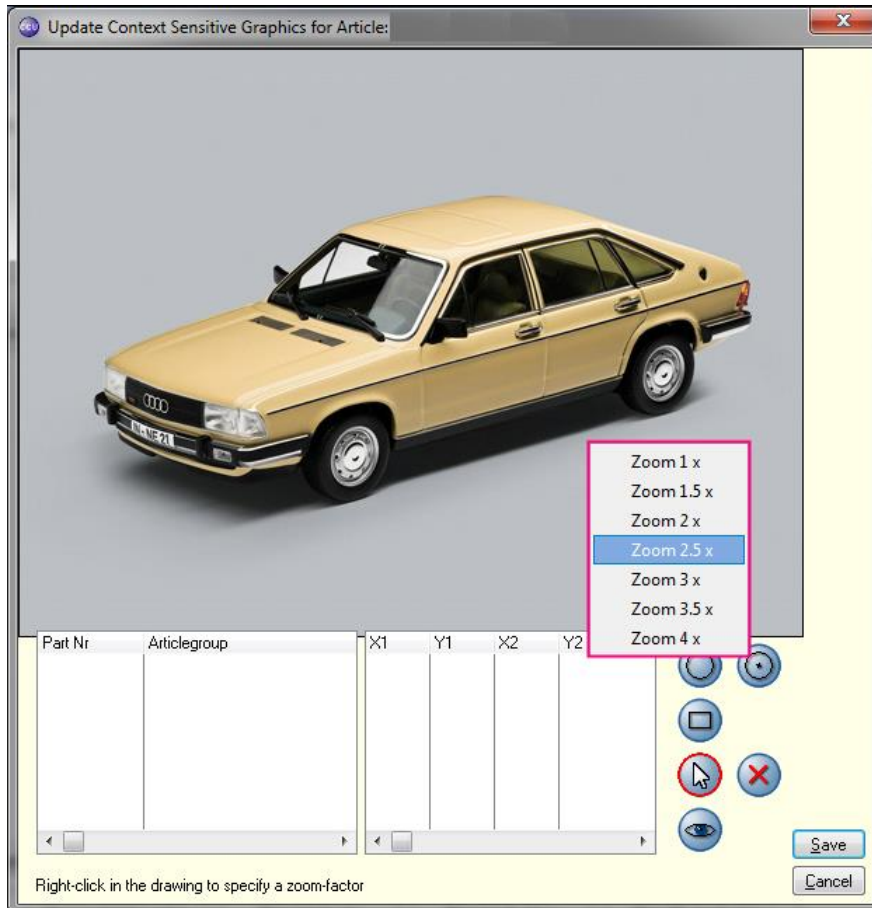


Figure 3: Zoom function in CSG

Labels in pop-up-window Update Supersessions

The labels in the pop-up-window *Update Supersessions* have changed. In previous versions of CCU these labels were named **Superseded by 1: to Superseded by 5:** in the new version of CCU these labels are named **Superseded by:** to **Superseded by -4:**. Also see *Figure 4: Update Supersessions*.

The functionality of Superseding articles is unchanged, meaning that when an article number is superseded, the new article number is shown in the textbox behind the label *Superseded by:*. The other textboxes can be used to manually fill in article numbers.

However, new in the pop-up-window *Update Supersessions* is that a filled article number can be opened directly, by clicking the triangle icon button behind the textboxes.



Figure 4: Update Supersessions

Grouping of the header in Report Preview

The grouping of the application information in the header of the Report Preview has changed on the points listed below. This has been done to show more or all information of the printed application(s). Also see the pink lining in *Figure 6: Report Preview header new*.

- *Model codes (mdl);*
The model codes have moved from the upper center to left below in the header. Furthermore this field has become multi line as there are some applications with more model codes than can be shown on one line.
- *Engine codes (eng);*
The engine codes have moved from the lower center to lower center/right in the header. Furthermore this field has become multi line as there are some applications with more engine codes than can be shown on one line.
- Furthermore labels have been added to clarify which information is shown for the field below.
 - *Cylinders (cyl);*
 - *Valves (vlv);*
 - *Driveshaft (drv);*
 - *BFM (bfm);*
 - *Generation (gen);*
 - *Sgear (sgear);*
 - *Sbox (sbox);*

To highlight the differences in the Report Preview, a print screen of the old and new situation are shown below. Also see the red lining in *Figure 5: Report Preview header old* for the old header and the pink lining in *Figure 6: Report Preview header new* for the new header.

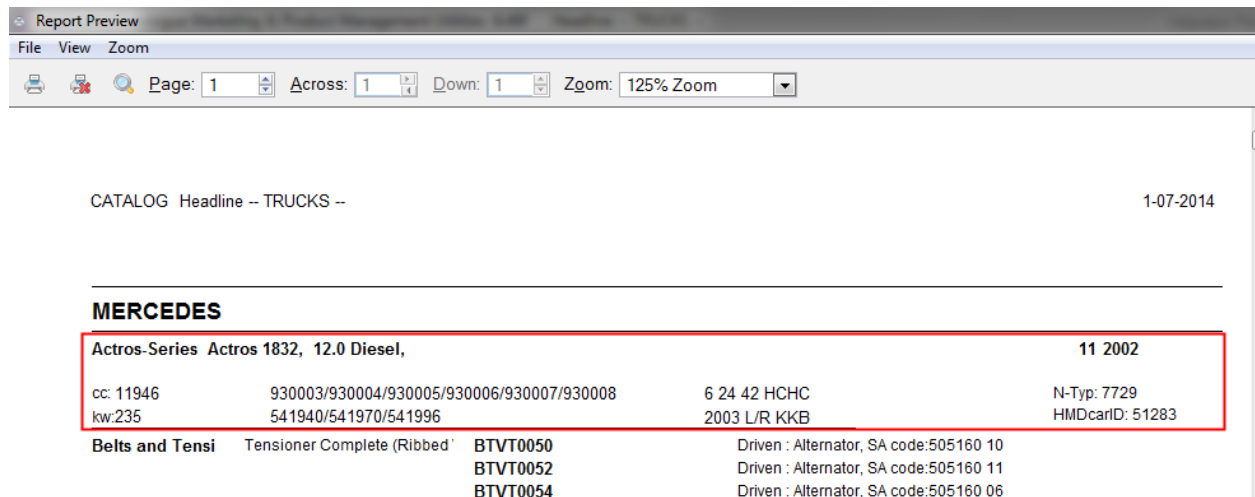


Figure 5: Report Preview header old

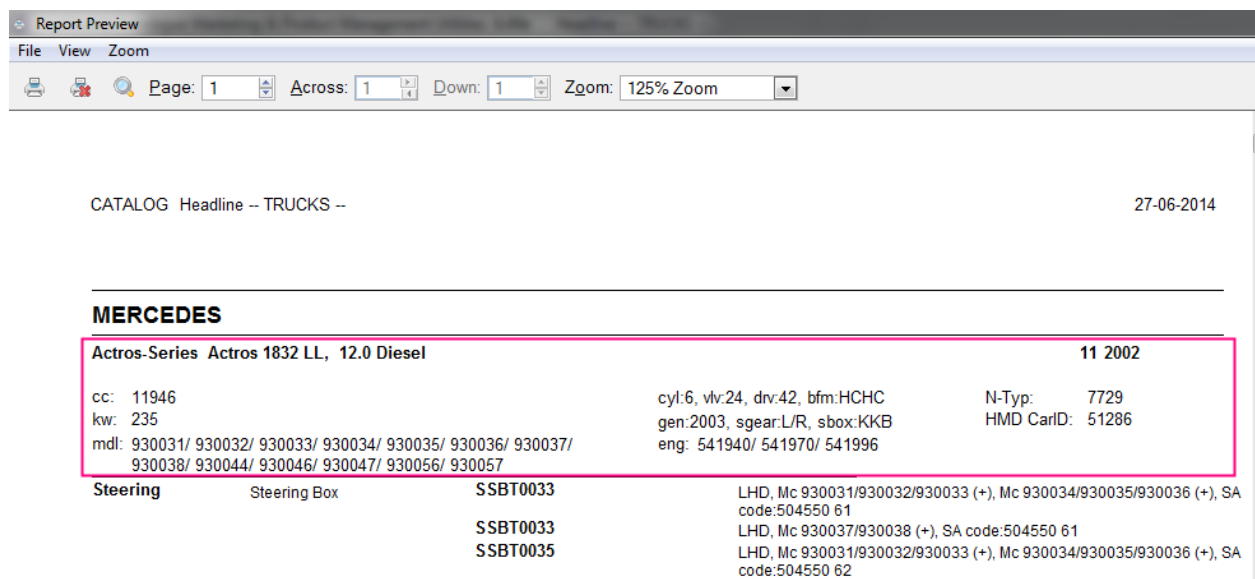


Figure 6: Report Preview header new

Furthermore it's now possible to choose the sorting of the articles based on the way they are shown in the tree in CCU or based on the alphabetical order of the article number. Also see the red lining in Figure 7: Select print options.

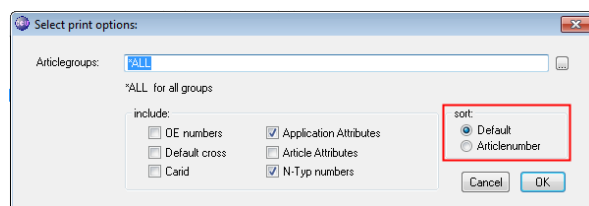


Figure 7: Select print options

TecDoc Export improvements

Over the couple of months we made several improvements in the TecDoc Export Module after feedback from our customers. One of these improvements is that we will now export the Model information when a HMD number is linked to multiple Ktyp numbers. Also see *Figure 8: Selection of ktyp 4036*.

Example: Ktyp 4036 with article PHC00221 is linked to HMD numbers 50056 (Jumper 27), 50060 (Jumper 31), 50074 (Jumper 35), 50084 (Relay 1400) and 50090 (Relay 1800).

Applications [Filter: Ktyp= 4036]																				
selected:																				
Generic Cables : CLC00414, CLC00415, CLC01901, CLC01903, HBC00881, HBC01801, HBC01802, HBC01803, PHC00221, PHC00364, PHC00365, PHC00366																				
HMD car	Make	Model	Stroke	Type	Model	Engin	Date		Cyl	Valve	Drive	Serie	Body	#drs	Gener.	kW	HP	S.Gear	S.Box	Ktyp
							from	to												
50056	CITROEN	Jumper 27	2.5	DT	231C	DJ5T	2 1994	8 1997	4	12	Fw	BUS	NA	1994	76	103	L	THB	4036	
50060	CITROEN	Jumper 31	2.5	DT	232B	DJ5T	2 1994	8 1997	4	12	Fw	BUS	NA	1994	76	103	L	THB	4036	
50074	CITROEN	Jumper 35	2.5	DT	233D	DJ5T	10 1995	8 1997	4	12	Fw	BUS	NA	1994	76	103	L	THB	4036	
50084	CITROEN	Relay 1400	2.5	DT	232B	DJ5T	2 1994	10 1997	4	12	Fw	BUS	NA	1994	76	103	R	THB	4036	
50090	CITROEN	Relay 1800	2.5	DT	233D	DJ5T	6 1995	10 1997	4	12	Fw	BUS	NA	1994	76	103	R	THB	4036	

Figure 8: Selection of ktyp 4036

The TecDoc Export Module now exports the Model information for each HMD number separately. Also see *Figure 9: Sample of the new TecDoc export output*

PHC00221	0174400	00124	0000014120000100024036	1
PHC00221	0174400	00124	000001412000020475VT	0
PHC00221	0174400	00124	000001412000030090Jumper 27	1
PHC00221	0174400	00124	000001412000040100V	1
PHC00221	0174400	00124	000001412000050564001	0
PHC00221	0174400	00124	00000141200006002616194399	1
PHC00221	0174400	00124	000001412000070008	1
PHC00221	0174400	00124	000001412000080475VT	0
PHC00221	0174400	00124	000001412000090090Jumper 31	1
PHC00221	0174400	00124	000001412000100100V	1
PHC00221	0174400	00124	000001412000110564001	0
PHC00221	0174400	00124	00000141200012002616194399	1
PHC00221	0174400	00124	000001412000130008	1
PHC00221	0174400	00124	000001412000140475VT	0
PHC00221	0174400	00124	000001412000150090Relay 1400	1
PHC00221	0174400	00124	000001412000160100V	1
PHC00221	0174400	00124	000001412000170564001	0
PHC00221	0174400	00124	00000141200018002616194399	1
PHC00221	0174400	00124	000001412000190008	1
PHC00221	0174400	00124	000001412000200475VT	0
PHC00221	0174400	00124	000001412000210020199506	1
PHC00221	0174400	00124	000001412000220090Relay 1800	1
PHC00221	0174400	00124	000001412000230100V	1
PHC00221	0174400	00124	000001412000240564001	0
PHC00221	0174400	00124	00000141200025002616194399	1
PHC00221	0174400	00124	000001412000260008	1
PHC00221	0174400	00124	000001412000270475VT	0
PHC00221	0174400	00124	000001412000280020199510	1
PHC00221	0174400	00124	000001412000290090Jumper 35	1
PHC00221	0174400	00124	000001412000300100V	1
PHC00221	0174400	00124	000001412000310564001	0
PHC00221	0174400	00124	00000141200032002616194399	1

Figure 9: Sample of the new TecDoc export output

Changelog

For a full list of changes, in addition to the ones outlined in this document, please review the changelog below. If you have any questions about the changelog please contact Headline Helpdesk for more information.

TYPE	DESCRIPTION
ADDED	: File with VIO on Article/Level/Country (TBLPLV)
ADDED	: Option to ignore IX sequence on TD export
ADDED	: Option to jump to supersession number from multiple supersession screen
ADDED	: Right-click on Context Sensitive Graphics to specify zoom
ADDED	: TecDoc export option to ignore tree sequence
CHANGE	: Automatic split numerical fields when exporting to TecDoc
FIX	: Changing model range when copying Heavy Duty articles to another model
FIX	: Entered KTypes on search screen disappeared when losing focus
FIX	: Export tables to XLSX format
FIX	: Fill Fields button hidden
FIX	: Invalid country restriction in 401.dat
FIX	: Invalid date values when logging article changes
FIX	: Issue with importing latest Stammdaten
FIX	: Issues with Vendor
FIX	: PDF button for read
FIX	: Read-only for non-manual defined HD vehicles
FIX	: Recalculation of VIO when split VIO per Maingroup
FIX	: Sheets scroll when they don't fit on the application window
FIX	: Show Drawing if on the first Sheet
FIX	: Show Drawing if renamed Drawing
FIX	: Splitting entered articles when containing spaces on bulk update
FIX	: Supersession > Superseded by
FIX	: TecDoc export when block separator with country restrictions
FIX	: TecDoc option for 432.dat added to batch configuration
FIX	: View PDF in read

Headline Database Service BV
Headline Software Technology BV

Horsterweg 24
6199 AC Maastricht Airport
The Netherlands

Tel.: +31 433 650 212
Fax: +31 433 650 125
Internet: www.headlineweb.nl
E-mail: info@headlineweb.nl