

## What's new in this edition

Thanks to the feedback of our customers, CCU has further improved since the previous-version. We also concentrated on general improvements in features. The main changes from last quarter include:

- It is now possible to create **Twin article records** of existing articles. Twin articles inherit all the Applications, Cross and OE information from the original article but you will not be able to change or edit them except for the article attributes.
- In addition to parts lists we have also added support for the **Accessory List**.
- It is now possible to **Customize toolbar color per Main Group** (only applicable for customers with multiple-main groups like for example Passenger Cars and Heavy Duty).
- **New drawing viewing options** have been added to the changing article window.

## Twin article records

It is now possible to create 'twins' of existing articles. Twin articles will inherit all the Applications, Cross and OE information from the original article but you will not be able to change or edit them. Only in the original article changes can be made to the Applications Cross and OE information. All changes will be automatically synchronized to the twin article. Only Article attributes can be changed to suit Aftermarket needs. For example you want to sell a caliper with a remanufactured variant. Select the article you want to create a 'twin' for and click the [Create Twin] button. Also see *Figure 1: create a twin*.

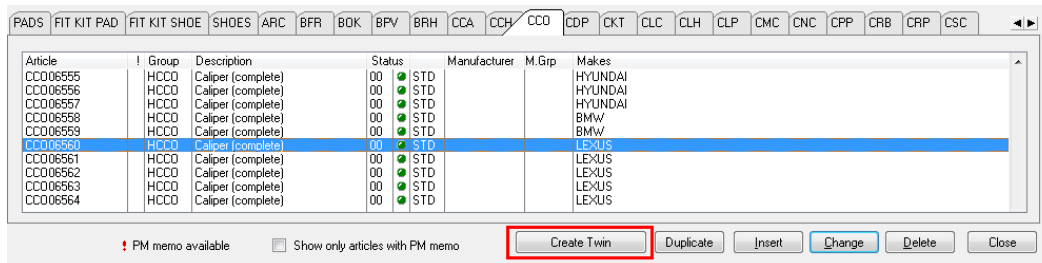


Figure 1: create a twin

A pop-up screen will now open. You will be asked to enter an article number for the 'twin' article. Press OK when finished.

Also see *Figure 2: pop-up window*

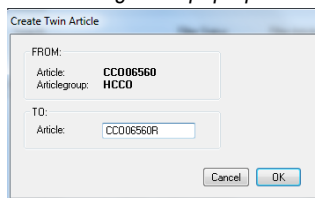


Figure 2: pop-up window

The Twin article is now created. Also see *Figure 3: overview*

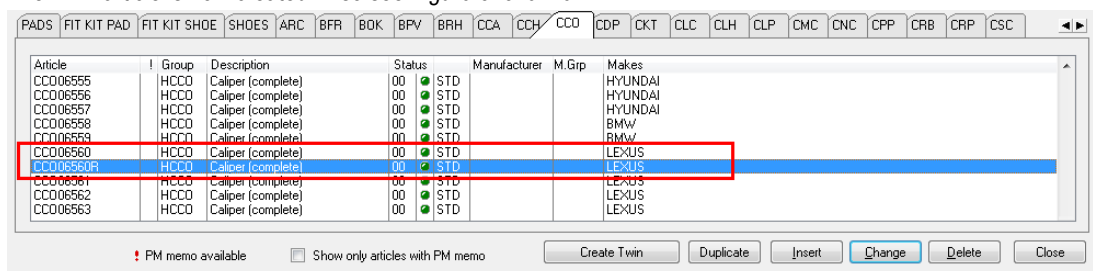


Figure 3: overview

In the example below we will add a new attribute value "Remanufactured: YES" for the 'Twin' article. Also see *Figure 4: changing the 'twin' article*. Please also note the 'twin' symbol on the right. If you click the symbol it will open the original article.

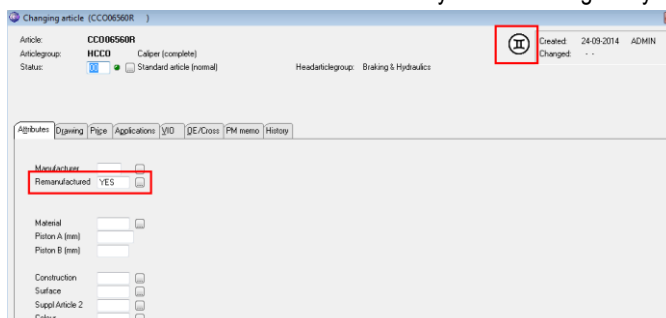


Figure 4: changing the 'twin' article

We have now successfully created a 'twin' article. On the application screen you will notice that the edit buttons are grayed out for the 'twin' article. Any changes in the application attributes must be made in the original article and will be automatically transferred to the 'twin' article. Also see *Figure 5: application screen*. Please also note the 'twin' symbol.

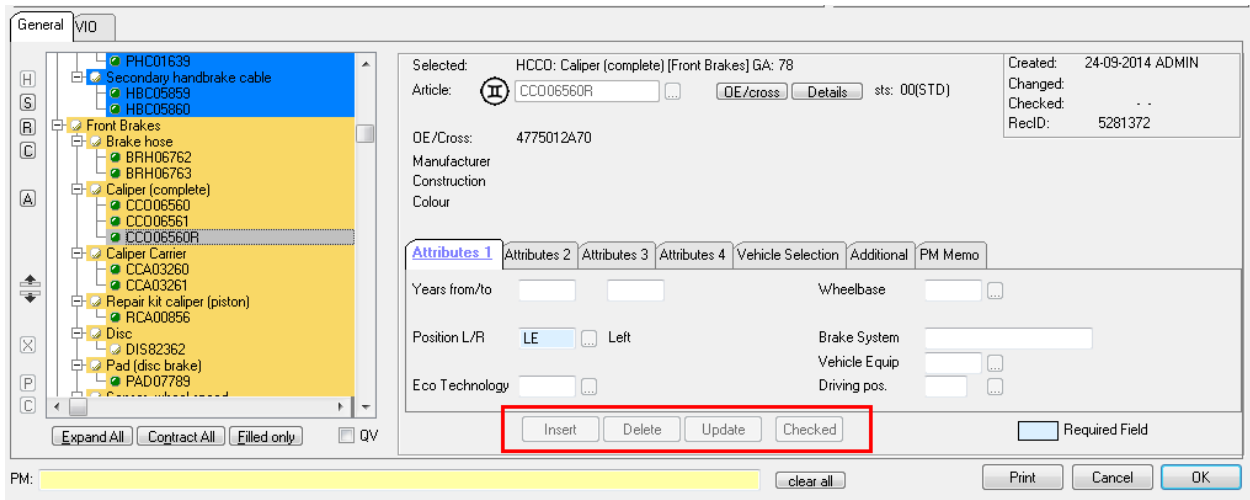


Figure 5: application screen

If you are interested in the Twin Article records functionality please contact our helpdesk so we can activate this functionality.

## Accessory List

In addition to the Parts List, which is a list of components which belong to an article, there is a new functionality called the **Accessory List**. The Accessory List can be used to link components to an article, which for example are used to mount an article to a vehicle.

To use Accessory List in CCU, it first has to be activated in CCU SV. This can be done by navigating to *Internal tables > Configuration*. The pop-up-screen **Update configuration** opens. Select the tab *Options* and check the checkbox *Enable Accessories* and click the button [Save and Exit]. Also see the red lining in *Figure 6: Enable Accessories*.

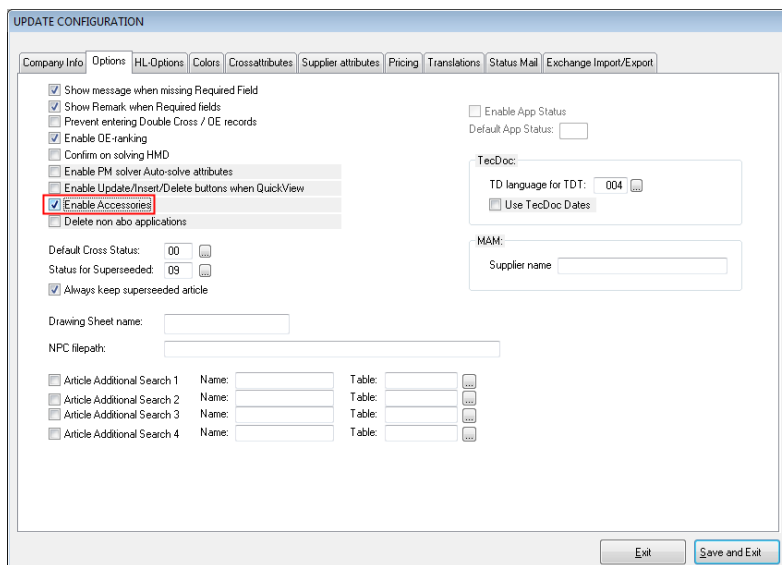


Figure 6: Enable Accessories

Then close and reopen CCU SV. Now the accessory list has to be activated per article group.

### Configuring the Accessory list

When navigating to *CCU SV > Internal Tables > Article Groups (ARG) > select article group > click button [Change]* the pop-up-screen **Change Articlegroup** opens. Here you can see a new tab **AccessoryList** which was activated in the previous step. Also see the black lining in *Figure 10: Accessory*. In this tab it's possible to set the following checkboxes:

- **Activate Accessory List:** by checking this checkbox the tab **Accessory List** is activated in CCU. Also see *Figure 7: Accessory List*

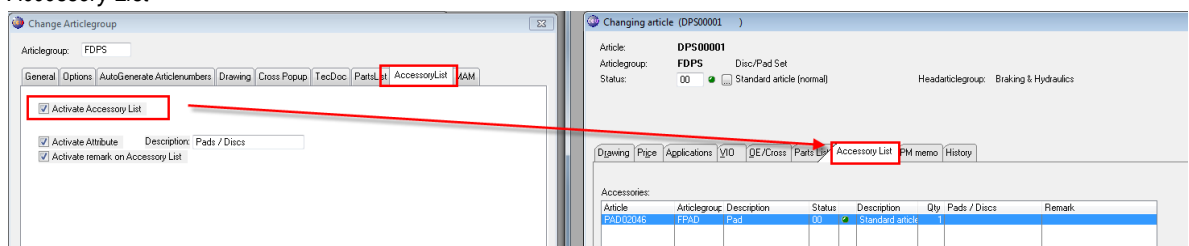


Figure 7: Accessory List

- When inserting or changing an article in the Accessory List, a pop-up-screen **Change** or **Add Accessory** opens. Also see *Figure 8: Insert/Change*.

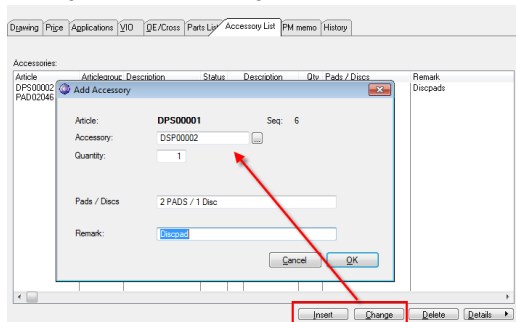


Figure 8: Insert/Change

The following 2 checkboxes apply to this pop-up-screen.

- **Activate Attribute:** by checking this checkbox a text field is activated where additional information can be stored. Also see *Figure 9: configuring Accessory List*
- **Activate Remark:** by checking this checkbox a text field is activated where additional remarks can be stored. Also see the *Figure 9: configuring Accessory List*

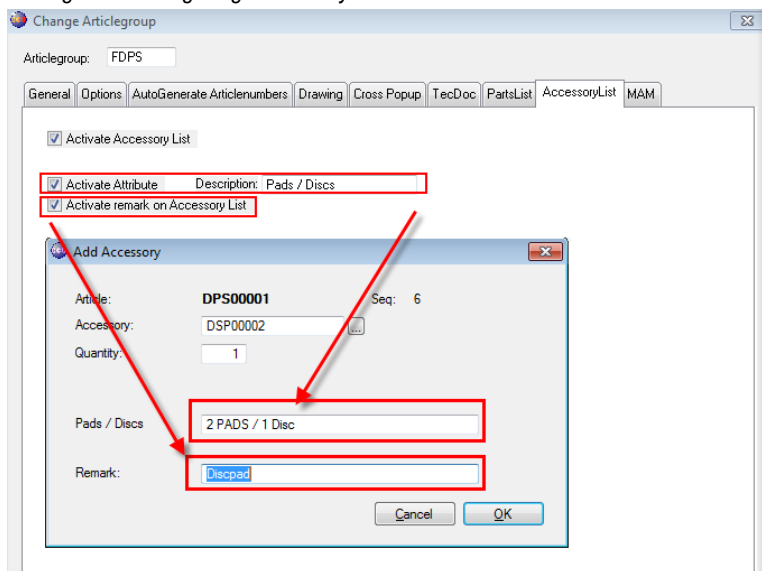


Figure 9: configuring Accessory List

### Configuring the Accessory

By checking this checkbox the article group can be used as an accessory, which means you can select it as an article in the Accessory List. Also see *Figure 10: Accessory* .

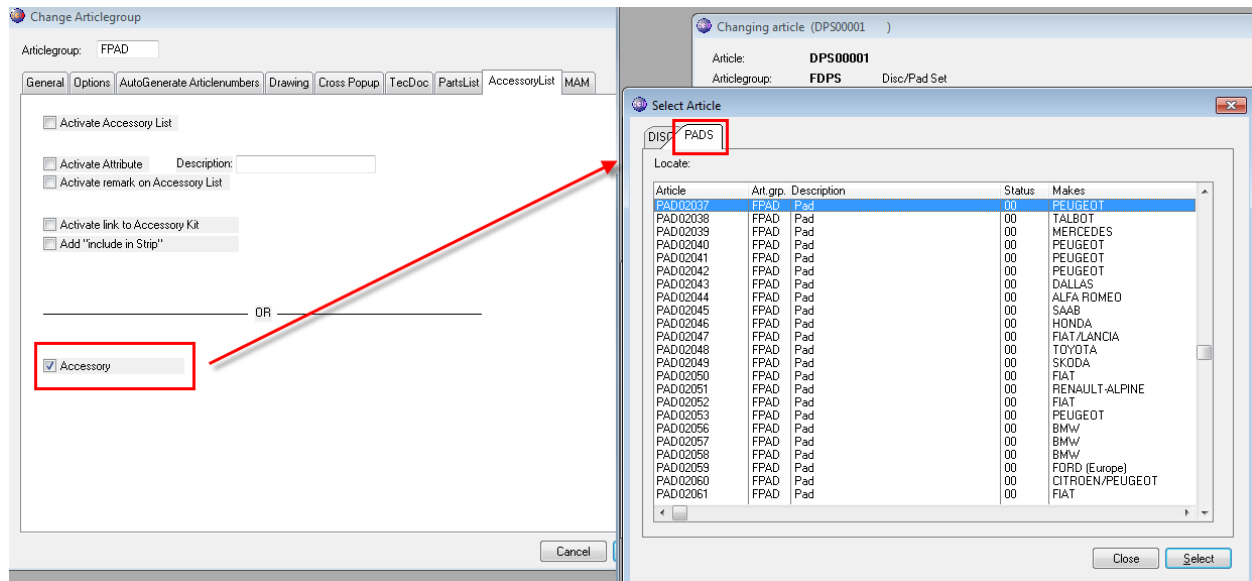


Figure 10: Accessory

## Customize toolbar color per Main Group

In CCU it's possible to customize the back color of the toolbar when a specified Main Group is selected. This applies when Main Group button or icon is clicked. If so a pop-up-screen opens with the title **Select Main Group**.

When changed the toolbar changes color. In the example below there are 3 Main Groups, which all have a different color. Also see *Figure 11: CCU Toolbar color*.

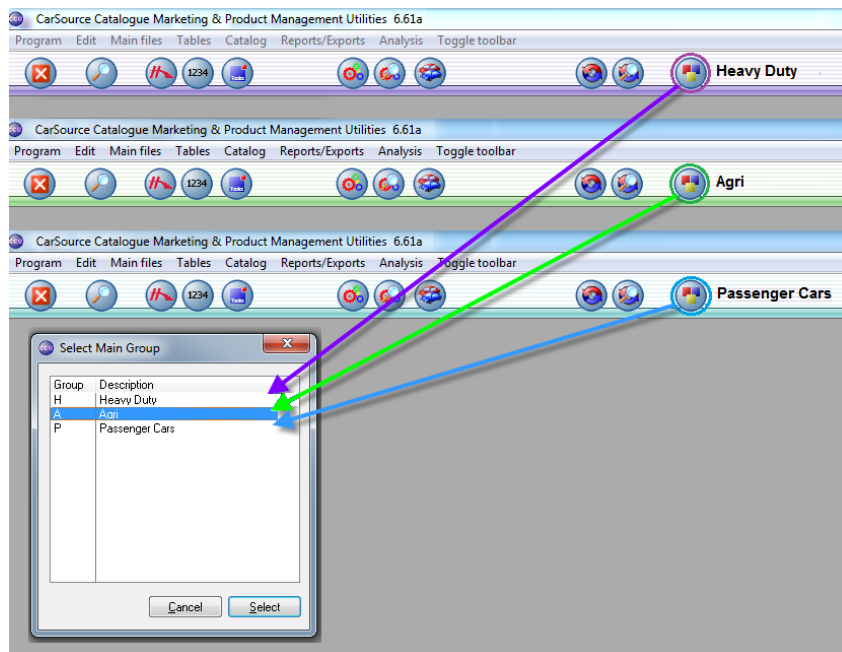


Figure 11: CCU Toolbar color

To set the different colors in CCU SV navigating to *CCU SV > Internal Tables > Main Groups (MGR) > select Main Group > [Change] > select tab Toolbar Color*. Now select the desired color and click [OK] to save the settings. Also see *Figure 12: Set Toolbar color in CCU SV*.

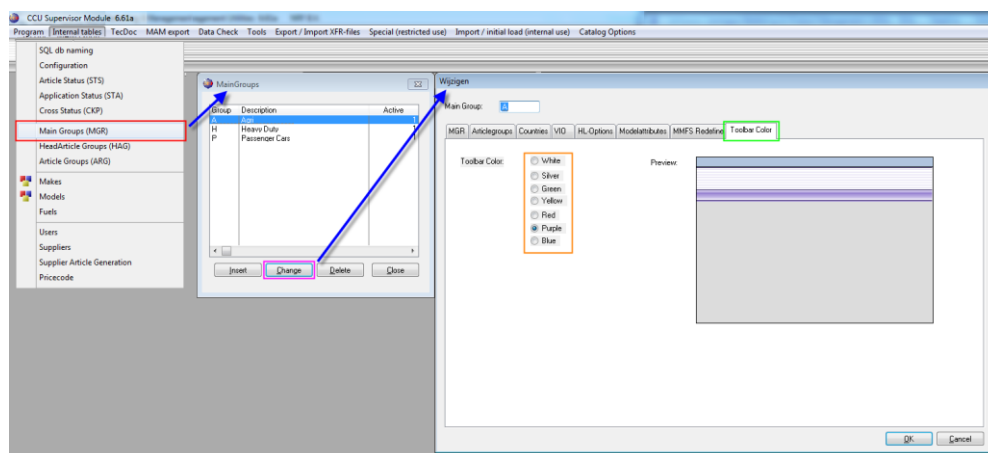


Figure 12: Set Toolbar color in CCU SV

## New drawing viewing options

The drawing module in CCU has been updated with some new features:

- Zoom function has been added for large drawings. See *Figure 13:Zoom and fit functions*
- *Fit*-Button to immediately scale the drawing to fit the window. See *Figure 13:Zoom and fit functions*

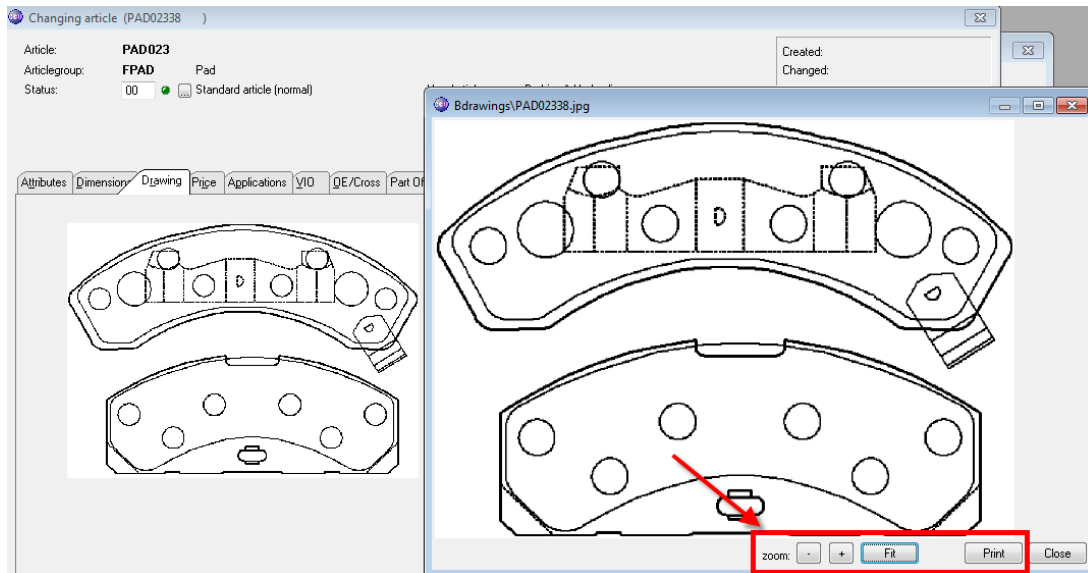


Figure 13:Zoom and fit functions

- Advanced print features have been implemented:
  - If a drawing fits the page it will be printed on actual size
  - If a drawing does not fit the page it will be scaled and/or rotated to fit the page. *Figure 14: Rotated and scaled print*

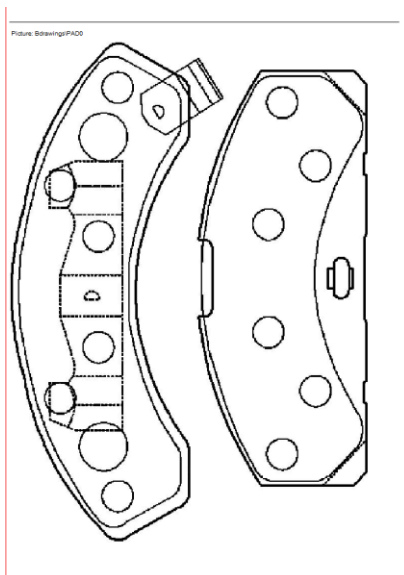


Figure 14: Rotated and scaled print



## **Change log**

For a full list of changes, in addition to the ones outlined in this document, please review the change log below. If you have any questions about the change log please contact Headline Helpdesk for more information.

<b>TYPE</b>	<b>DESCRIPTION</b>
ADDED	: Accessory List support/222.DAT export
ADDED	: Color toolbar per maingroup
ADDED	: Copy added HMD-numbers to clipboard in HMD-solver
ADDED	: Debug View log function for internal use Software
ADDED	: Eucon ID on supplier level
ADDED	: Logging menu option usage
ADDED	: MAM code on ALV level
ADDED	: Option to use alternate XLSX generation for large files
ADDED	: Reports for accessories
ADDED	: Rotate 90 degrees drawing when printing
ADDED	: Select status for bulk status change
ADDED	: Sort option on application print
ADDED	: Twin article records
ADDED	: Zoom function for drawing preview
CHANGE	: Add by OE number rebuild
CHANGE	: Development switched to Clarion 9.1
CHANGE	: Message when entering duplicate Cross/OE record
CHANGE	: User with only read-rights can no longer change cross records
FIX	: Adding multiple articles in Multi-Select mode
FIX	: HMD export sheet numbers XLS file
FIX	: Import articlenumbers uppercase
FIX	: Length of model code TecDoc vehicles
FIX	: Selected Part in OE strip after mouse-click

**Headline Database Service BV**  
**Headline Software Technology BV**

Horsterweg 24  
6199 AC Maastricht Airport  
The Netherlands

Tel.: +31 433 650 212  
Fax: +31 433 650 125  
Internet: [www.headlineweb.nl](http://www.headlineweb.nl)  
E-mail: [info@headlineweb.nl](mailto:info@headlineweb.nl)