


## What's new in this edition

Welcome to a new edition of the CCU Newsletter. To better satisfy our customer needs we recently decided to increase the CCU software updates from four to six times a year. So instead of four major software releases a year (each quarter) you will now receive six updates. Please note that this change will not affect the CCU data updates that are already scheduled in any kind. Furthermore we will send a newsletter every two months or six times a year instead of every three months or four times a year.

Software update	Release
February 2015	From 26-02-2015
April 2015	From 23-04-2015
June 2015	From 25-06-2015
August 2015	From 27-08-2015
October 2015	From 29-10-2015
December 2015	From 17-12-2015

Of course we also improved the CCU program. One of the new features is the *OE Article Analysis + PM Solver data* report. This report will give an overview if an OE number is already in your data and/or if Headline has PM data for it.

We also improved the *Product Class* functionality in the *ABC Top Analysis on Article level report*. You can now specify a *Product Class* for vehicles with a certain age.

For customers that update and edit a lot of application linkages a day we have added a check mark  feature to keep track of their work. This check mark will automatically disappear after 24 hours.

## New report: OE Article Analysis + PM Solver data

For customers that have access to the PM Solver a new report has been added in CCU.

You can now create an analysis report that also searches data from the PM Solver, i.e. OE numbers known in Headlines OE research AND in the existing part numbers. With this report you will get an overview if an OE number is already in your data and if Headline has PM data for it. To access this report please navigate to: CCU > Analysis > OE Articles PM Data Analysis Report (make sure to have authorization to use the PM Solver). Enter or paste OE numbers (for example from MS Excel) in the field below and click on [Start] to run the report. Also see *Figure 1: OE Article Analysis + PM Solver data*.

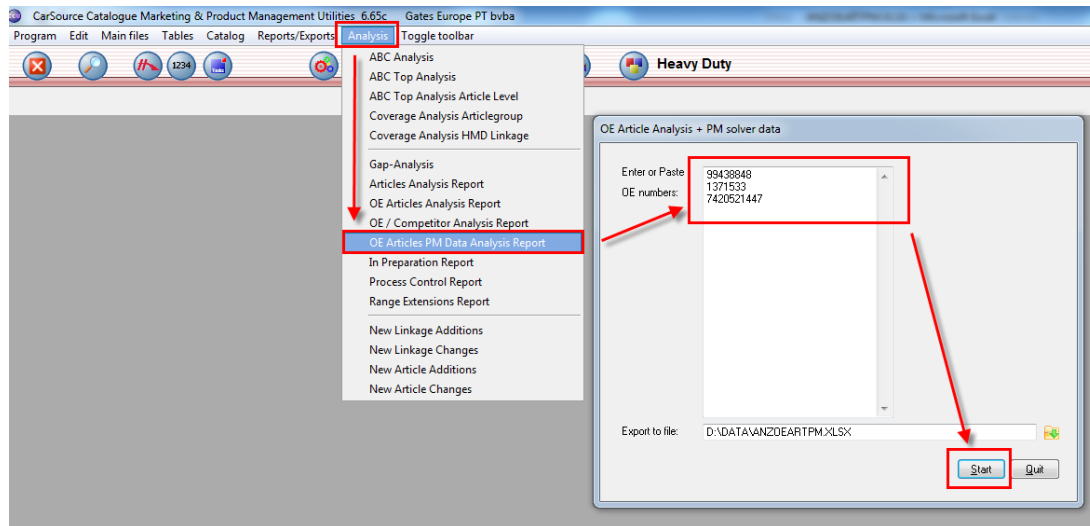


Figure 1: OE Article Analysis + PM Solver data

When the report is finished in column B you will see the OE numbers you entered or pasted. Column C displays which category an OE reference belongs to. These categories are the following:

- *Gap*: missing OE references that are not available yet in customer data;
- *OE Supersession*: missing OE references that have been matched to existing customer data;
- *Range Extension*: missing application linkages for existing customer data;
- *Match*: OE references that have been already matched to customer data;
- *CUST. Data*: application-OE references that aren't available in the Headline data;
- *Unknown OE*: OE numbers that are unknown;

Column D shows you the OE article number and column E the match of the possible customer article number. The HMD number of an existing or possible OE reference match is displayed in column K. Also see *Figure 2: OE Article Analysis + PM Solver data report*

	A	B	C	D	E	F	G	H	I	J	K	M	N
1	Request	OE reference	PM Solver Status	OE Article	Possible Match	Article	Description	Article	Description	CarID	HMD car	Make	Model
2	1	99438848	Gap	THET0066	-	CTHE	Thermostat [Radiators]	00	Normal	30051	55985	IVECO	Eurostar 190E52
3	1	99438848	Gap	THET0066	-	CTHE	Thermostat [Radiators]	00	Normal	80734	119943	IVECO	Eurostar 190E52
4	1	99438848	Gap	THET0066	-	CTHE	Thermostat [Radiators]	00	Normal	40106	81975	IVECO	Eurostar 440E52P
5	1	99438848	Gap	THET0066	-	CTHE	Thermostat [Radiators]	00	Normal	40121	82030	IVECO	Eurostar 440E52P
6	2	1371533	Match	RVBT0008	8000-RV-5	DRVB	Ribbed V-Belt	20	Standard	38454	78560	SCANIA	114C 260
7	2	1371533	Range Extension	RVBT0008	8000-RV-5	DRVB	Ribbed V-Belt	20	Standard	16915	78637	SCANIA	114L 340
8	2	1371533	Match	RVBT0008	8000-RV-5	DRVB	Ribbed V-Belt	20	Standard	16916	78638	SCANIA	114L 340
9	3	7420521447	OE Supersession	TPRT0019	T0005533	DTPR	Deflection/Guide Pulley (Ribbed V-Belt)	20	Standard	33741	65750	RENAULT TRUCKS	Kerax 460.32
10	3	7420521447	Match	TPRT0019	T0005533	DTPR	Deflection/Guide Pulley (Ribbed V-Belt)	20	Standard	33742	65756	RENAULT TRUCKS	Kerax 460.32
11	3	7420521447	Range Extension	TPRT0019	T0005533	DTPR	Deflection/Guide Pulley (Ribbed V-Belt)	20	Standard	29885	55231	RENAULT TRUCKS	Magnum 520.26
12	3	7420521447	Range Extension	TPRT0019	T0005533	DTPR	Deflection/Guide Pulley (Ribbed V-Belt)	20	Standard	32889	63532	RENAULT TRUCKS	Magnum 520.26
13	3	7420521447	CUST. Data	-	T0005533	DTPR	Deflection/Guide Pulley (Ribbed V-Belt)	20	Standard	31263	59480	VOLVO	FH 400
14	3	7420521447	CUST. Data	-	T0005533	DTPR	Deflection/Guide Pulley (Ribbed V-Belt)	20	Standard	31264	59481	VOLVO	FH 400
15	3	7420521447	CUST. Data	-	T0005533	DTPR	Deflection/Guide Pulley (Ribbed V-Belt)	20	Standard	31268	59649	VOLVO	FH 400
16	3	7420521447	CUST. Data	-	T0005533	DTPR	Deflection/Guide Pulley (Ribbed V-Belt)	20	Standard	31269	59650	VOLVO	FH 400
17	3	7420521447	CUST. Data	-	T0005533	DTPR	Deflection/Guide Pulley (Ribbed V-Belt)	20	Standard	31293	59784	VOLVO	FH 400

Figure 2: OE Article Analysis + PM Solver data report

### ABC Top Analysis - Product classification per Age

Previously we announced the *Product Class* feature in the *ABC Top Analysis on Article level report* (CCU > Analysis > ABC Top Analysis Article Level). We've also added a new feature. Now it is possible to specify a *Product Class* for vehicles with a certain age. This is especially useful if your business is not interested in vehicles that are under a certain age. For example let's take the FPAD Articlegroup. The average brake pad will have to be changed within 2 years. So for the FPAD Articlegroup we can configure this by navigating to *CCU SV > Internal tables > ABC Product Classes* and using the settings below.

Use Product Class: X  
 when: 80 % of the vehicles  
 is younger than: 24 months

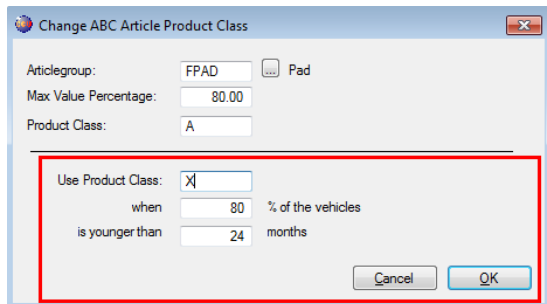


Figure 3: Configuring the ABC Article Product Class

If the ABC Top Analysis would run after the above configuration, it will assign the product class "X" when 80 % of the vehicles to which the article is linked to are younger than 24 months. This will only be visible if the options *Use Product Class* and *Use Additional Product Class Calculation for age* are checked. Also see Figure 4: Select Use Product Class and Use Additional Product Class Calculation for age.

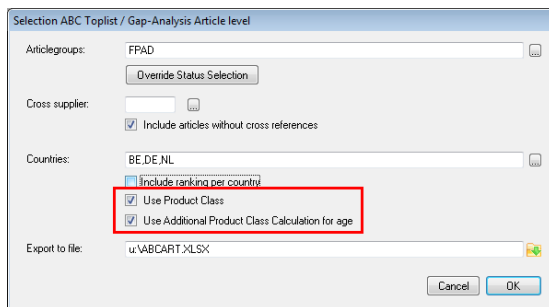



Figure 4: Select Use Product Class and Use Additional Product Class Calculation for age

The article marked in red would normally get Product Class A but as 80% of the applications linked are younger than 24 months it is marked with an "X". In short: this article is not interesting to produce yet. Also see Figure 5: Article with Product Class X

	A	B	C	D	E	F	G	H	I	J	K	L	M	N	O	P	Q	R	S	T	U	V	W	X		
1	Ranking	Article	ARG	Descriptor	Status	Status Description	Total	%	cum % class	OE	Make/Model	BE	Belgium	BE %	cum % BE	BE cla	DE	German	DE %	cum % DE	DE cla	NL	Netherl	NL %	cum % NL	NL clas
2	1	PAD07203	FPAD	Pad	00	Standard article (normal)	5805482	3.80	3.80	A	1J0698151D/1J069 AUDI A2 1.4 / AUDI	377908	2.41	2.41	A	4946544	4.27	4.27	A	481030	2.25	2.25	A			
3	2	PAD80024	FPAD	Pad	00	Standard article (normal)	4333185	2.83	6.63	A	1K0698451C/1K069 AUDI A1 1.2 / AUDI	313072	2.00	4.41	A	3610961	3.12	7.39	A	409132	1.91	4.16	A			
4	3	PAD80327	FPAD	Pad	99	OE, New in database	3115800	2.04	8.67	A	5K0698151/5K069 AUDI A1 1.4 / AUDI	258789	1.65	6.06	A	2568620	2.22	9.61	A	288391	1.35	5.50	A			
5	4	PAD80341	FPAD	Pad	99	OE, New in database	2893118	1.89	10.56	A	3C0698151B/3C069 AUDI A3 Cabrio 1.2	150479	0.96	10.46	A	2507402	2.17	11.78	A	235237	1.10	6.60	A			
6	5	PAD07744	FPAD	Pad	00	Standard article (normal)	2650838	1.73	12.30	A	1K0698151F/1K069 AUDI A3 1.2 / AUDI	202090	1.29	7.35	A	2223766	1.92	13.70	A	224982	1.05	9.78	A			
7	6	PAD07164	FPAD	Pad	00	Standard article (normal)	2437520	1.59	13.89	A	1J0698151/1J069 AUDI A3 1.6 / SEAT	164341	1.05	9.50	A	2047955	1.77	15.47	A	225214	1.05	8.73	A			
8	7	PAD07706	FPAD	Pad	00	Standard article (normal)	2056117	1.35	15.24	A	1K0698451D/1K069 AUDI A3 1.2 / AUDI	142340	0.91	12.33	A	1738555	1.50	16.97	A	175222	0.82	12.36	A			
9	8	PAD82219	FPAD	Pad	00	Standard article (normal)	1888239	1.24	16.47	A	1J0698451/1J069 AUDI A3 1.6 / AUDI	135934	0.87	14.08	A	1573941	1.36	18.33	A	178364	0.83	11.54	A			
10	9	PAD81593	FPAD	Pad	00	Standard article (norma	1856348	1.21	17.69	X	1605625/1605967/ OPEL Astra 1.2 / C	173648	1.11	8.45	X	1451984	1.25	19.58	X	230716	1.08	7.68	X			
11	10	PAD07973	FPAD	Pad	00	Standars article (normal)	1721504	1.13	18.81	A	5K0698451/5K069 AUDI A1 1.4 / AUDI	150360	0.96	11.42	A	1438023	1.24	20.83	A	133121	0.62	16.50	A			
12	11	PAD80521	FPAD	Pad	99	OE, New in database	1445679	0.95	19.76	A	6R0698151A/6R069 AUDI A1 1.2 / AUDI	127572	0.81	16.61	A	1119419	0.97	22.78	A	198688	0.93	10.71	A			
13	12	PAD07884	FPAD	Pad	00	Standard article (normal)	1323284	0.87	20.63	A	3A6698451/3A669 AUDI A6 2.0 / AUDI	95380	0.61	20.81	A	1144857	0.99	21.82	A	83047	0.39	25.99	A			
14	13	PAD07584	FPAD	Pad	00	Standard article (normal)	1246027	0.82	21.44	A	1605080/16051077/ OPEL Astra 1.2 / Of	119603	0.76	18.17	A	1001481	0.87	23.05	A	124943	0.58	17.67	A			

Figure 5: Article with Product Class X

## New Configuration option: Show checkbox-icon in tree for checks/updates today

A new option is available in CCU that allows you a quick overview of which application linkage you update. The changed application linkage is provided with a check mark . This is very useful when you update many application linkages a day and want to keep track of your work. The check mark automatically disappears after 24 hours. See also *Figure 6: Checkbox-icon*.

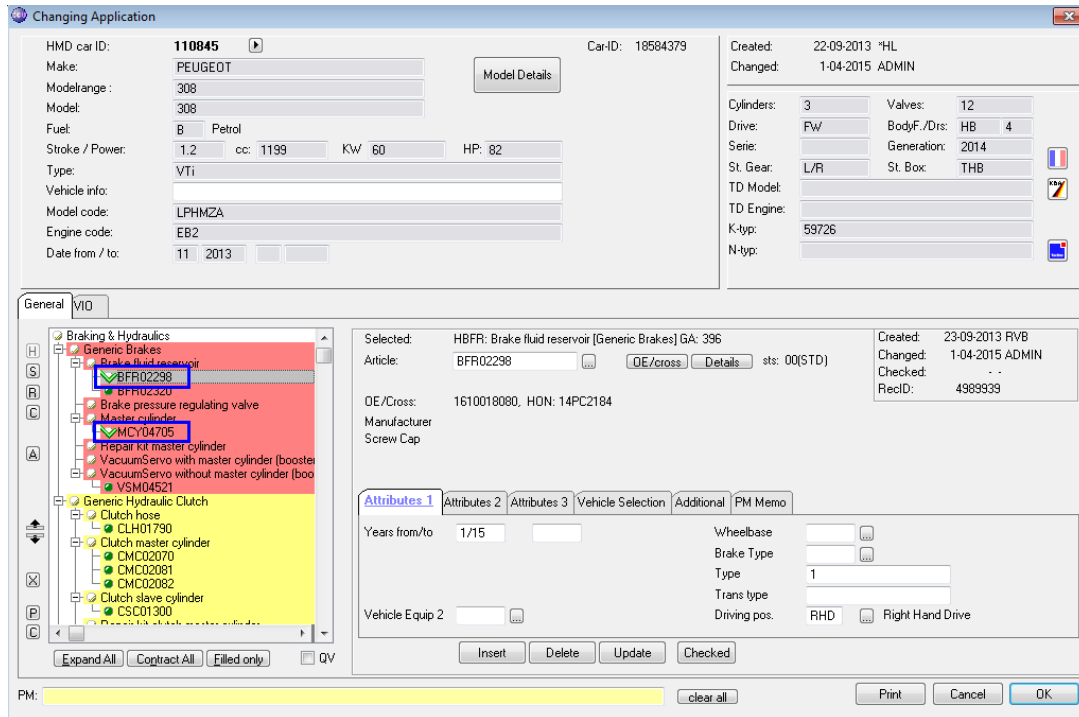


Figure 6: Checkbox-icon

To activate this feature please navigate to *CCU > Configuration* and check *Show checkbox-icon in tree for checks/updates today*. See also *Figure 7: Activate Show checkbox-icon in tree for checks/updates today*

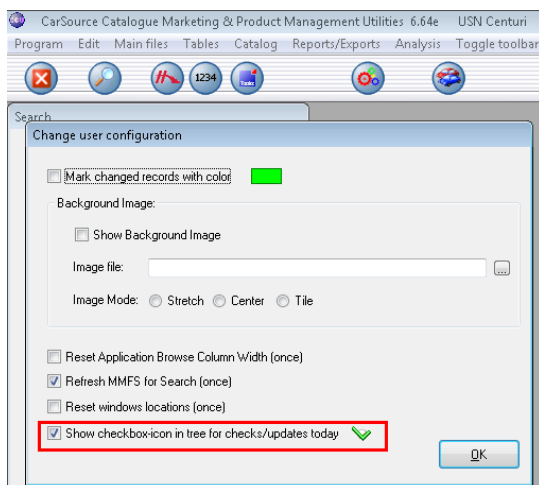


Figure 7: Activate Show checkbox-icon in tree for checks/updates today

## **Changelog**

For a full list of changes, in addition to the ones outlined in this document, please review the changelog below. If you have any questions about the changelog please contact Headline Helpdesk for more information.

<b>TYPE</b>	<b>DESCRIPTION</b>
ADDED:	Product Class extension (age)
ADDED:	PM Solver Range Extension can be enabled per article status
ADDED:	Additional columns in HMD/HGD file
ADDED:	#aaaa attributes on Article level
ADDED:	TecDoc status in Product application and article data export
ADDED:	Additional HMD data fields
ADDED:	Interchangeable Articlegroups for superseding
ADDED:	OE Article Analyses + PM Solver data report
FIX:	Export path when running CCU TD in batch
FIX:	Confirm when deleting saved export run
FIX:	Bugfixes Compression catalog
FIX:	Bugfixes PM Solver 2.0

**Headline Database Service B.V.**  
**Headline Software Technology B.V.**

Horsterweg 24  
6199 AC Maastricht Airport  
The Netherlands

Tel.: +31 433 650 212  
Fax: +31 433 650 125  
Internet: [www.headlineweb.nl](http://www.headlineweb.nl)  
E-mail: [info@headlineweb.nl](mailto:info@headlineweb.nl)