

What's new in this edition

Here at Headline we always appreciate your feedback and constructive criticism. Along with general improvements in features and bug fixes we picked the best suggestions and incorporated them in the CCU software for all our customers. The main changes from last quarter include:

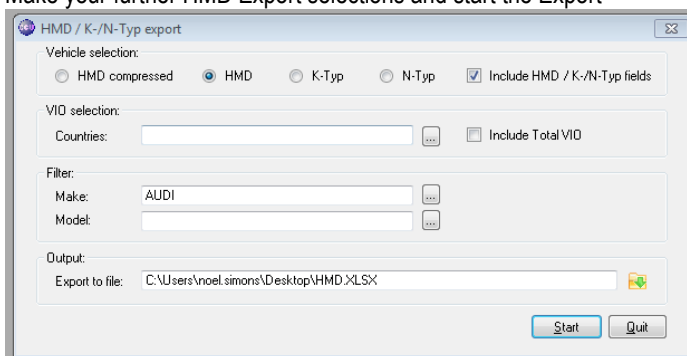
- Added MMI to HMD export
- Tecdoc criteria in QuickView
- PM-memo and TecDoc status to Export multiple articles extended
- Transmission and Aspiration on HMD level
- Ntyp for HMD / Ktyp export (Heavy Duty)
- PopUp screen for MAM information
- View function for Product Application & Data Export Run
- Multiple Make selection for Product Application & Data Export Run
- Sort fields for articlegroup filter on article browse
- PM-Solver OE Supersession export to Excel

Modifications: HMD Export

MMI column (subscription required)

A new column called MMI is added to the HMD export. This column displays the MMI linkage(s) (MAM Make and Model references) for each HMD number.

1. Open CCU
2. Navigate to Reports/Exports > HMD/Ktyp Export
3. Select 'HMD compressed' or 'HMD' at the Vehicle selection and also check the 'Include HMD / K-/N-Typ fields' checkbox
4. Make your further HMD Export selections and start the Export



5. Open the Excel file upon completion
6. The last row in the Excel file displays the new MMI column

NTYP column for Heavy Duty (subscription required)

When running the HMD / Ktyp Export for Heavy Duty, the column 'NTYP' will be exported. This column displays the NTYP numbers for the exported HMD numbers.

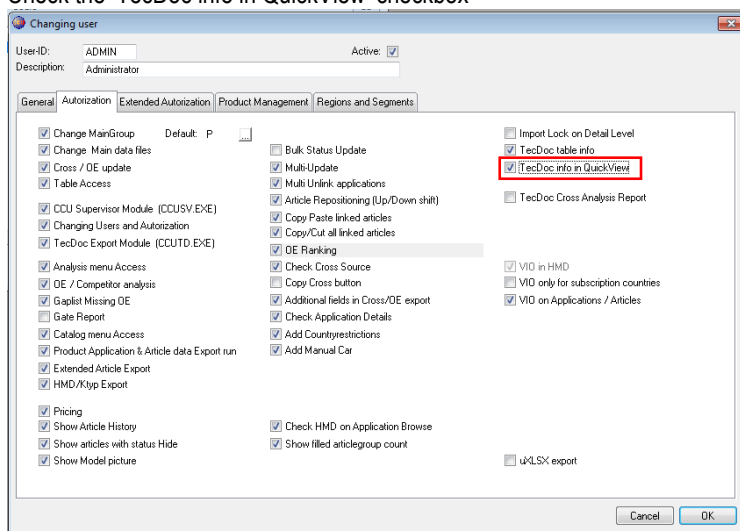
1. Open CCU
2. Switch the Main group to Heavy Duty
3. Navigate to Reports/Exports > HMD/Ktyp Export
4. Check the 'Include HMD / K-/N-Typ fields' checkbox
5. Make your further HMD Export selections and start the Export
6. Open the Excel file upon completion
7. The Ntyp numbers are displayed correctly in the Export file

TecDoc criteria in Quickview

The 'QuickView' part in the 'Change Application' window can now display the TecDoc criteria linked to the Application Attributes of the selected Article in the Article Tree. This needs to be configured first in the CCUSV module.

Configuration

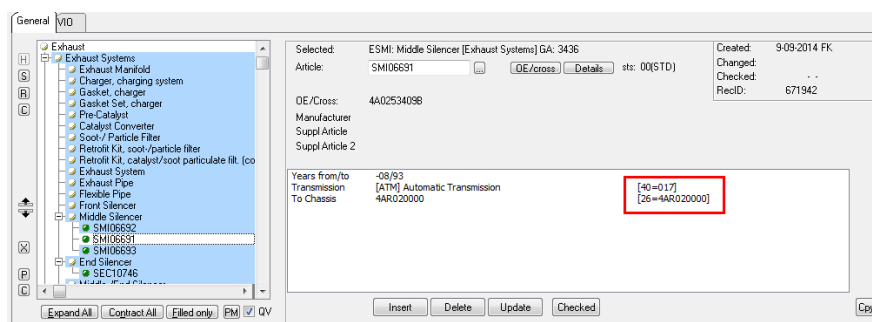
1. Open CCUSV
2. Navigate to Internal Tables > Users
3. Select a user from the list
4. Open the 'Authorization' tab
5. Check the 'TecDoc info in QuickView' checkbox



6. Click the OK button and close CCUSV

Quickview part

1. Open CCU
2. Open the Applications window and select an Application from the list
3. Select an Article from the Article Tree
4. In the Quickview part of the screen the TecDoc info is displayed



Modifications: Export multiple articles extended

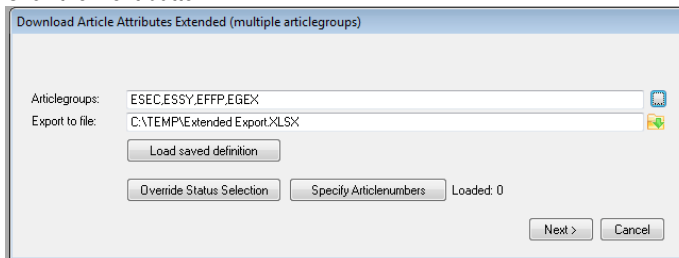
Extra columns

When making the selections for the 'Export multiple articles extended' report, some extra columns can be selected. The extra columns are:

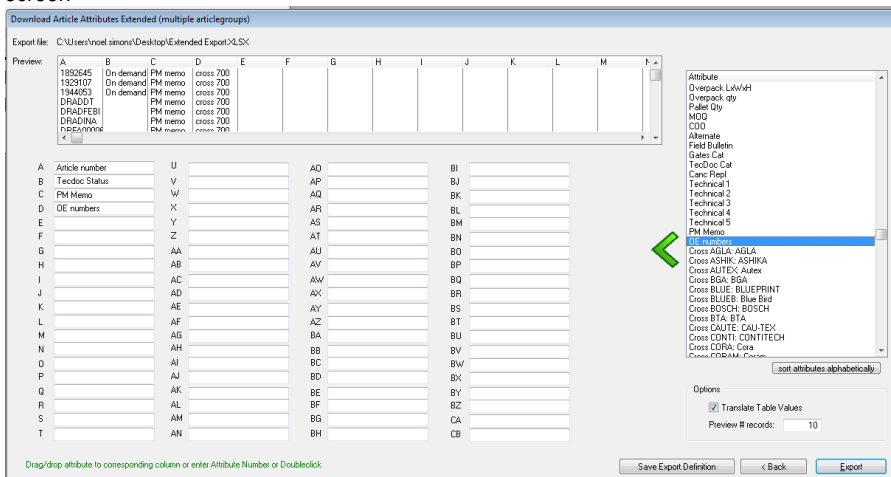
- PM Memo
- TecDoc Status
- Text field

Adding these columns to the export can be done by performing the following steps:

1. Open CCU
2. Navigate to Reports/Exports > Export multiple articles extended
3. Select one or more Articlegroups and set the file location
4. Click the Next button



5. When the new window appears, you'll see a list in the right side of the screen. The options in this list can be added to the Export. Select the right option, then drag and drop the option to one of the free / open columns in the left part of the screen

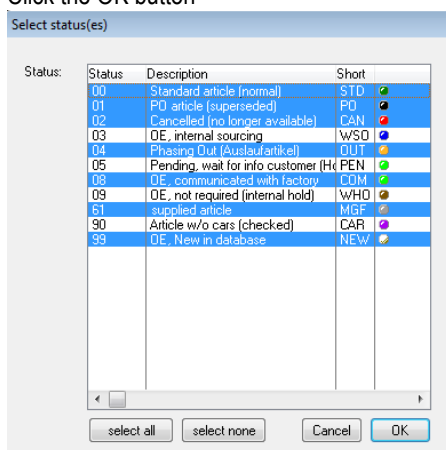


6. When everything is configured correctly, click the Export button
7. Open the Excel file upon completion. You'll see that the extra columns are visible in this file

Override Status Selection

Before making the selections for the 'Export multiple articles extended' report, it is possible to set the Status Selection for the Export. This can be achieved by performing the following steps:

1. Open CCU
2. Navigate to Reports/Exports > Export multiple articles extended
3. Select one or more Articlegroups and set the file location
4. Click the 'Override Status Selection' button
5. Select the Status(es) that you want to Export
6. Click the OK button



7. Continue the Export by clicking the Next button

Wildcard selection

Before making the selections for the 'Export multiple articles extended' report, it is possible to specify the Articlenumbers that need to be exported. Now it is also possible to use the % character as a wildcard.

So when entering the following Articlenumber: **AB%**

All Articlenumbers that start with AB will be exported (AB, ABDF, AB466)

1. Open CCU
2. Navigate to Reports/Exports > Export multiple articles extended
3. Select one or more Articlegroups and set the file location
4. Click the 'Specify Articlenumbers' button
5. Enter or paste Articlenumber(s) separated with an comma
6. Click the OK button
7. Continue the Export by clicking the Next button

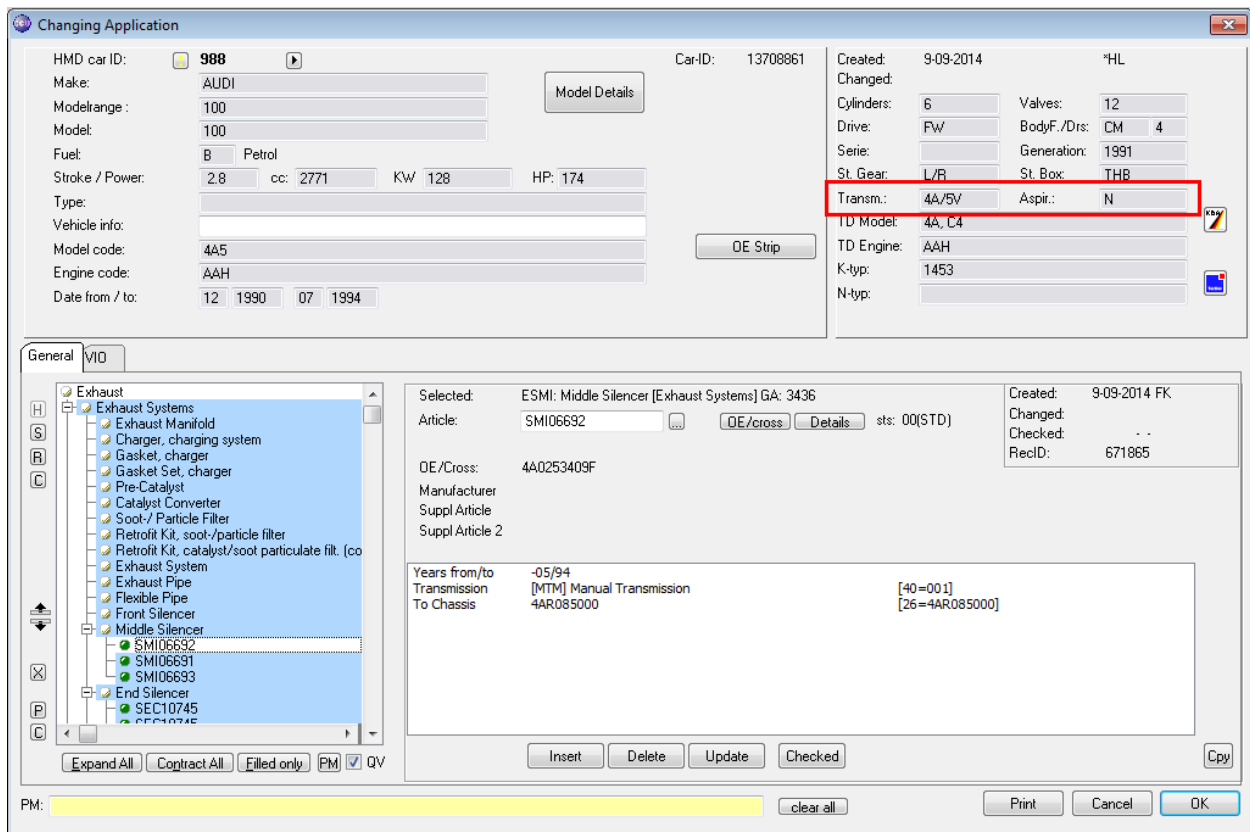
Modifications: Application window

New fields

When viewing / editing an Application, two new fields are visible. These fields are:

- Transmission
- Aspiration

These fields can be used to modify the selected Application in your CCU database.



Changing Application

HMD car ID: **988** Car-ID: 13708861 Created: 9-09-2014 *HL

Make: AUDI Modelrange: 100 Valves: 12

Model: 100 Drive: FW BodyF./Drs: CM 4

Fuel: B Petrol Serie: Generation: 1991

Stroke / Power: 2.8 cc: 2771 KW 128 HP: 174 St. Gear: L/R St. Box: THB

Type: **Trans.: 4A/5V Aspir.: N**

Vehicle info: ID Model: 4A, C4 TD Engine: AAH

Model code: 4A5 K-ty: 1453 N-ty:

Engine code: AAH

Date from / to: 12 1990 07 1994

General | VID

Selected: ESMI: Middle Silencer [Exhaust Systems] GA: 3436 Created: 9-09-2014 FK

Article: SM106692 OE/cross: Details: sts: 00(STD) Changed: ..

OE/Cross: 4A0253409F ReclD: 671865

Manufacturer: Suppl Article: Suppl Article 2

Years from/to: -05/94 [40=001]

Transmission: [MTM] Manual Transmission [26=4AR085000]

To Chassis: 4AR085000

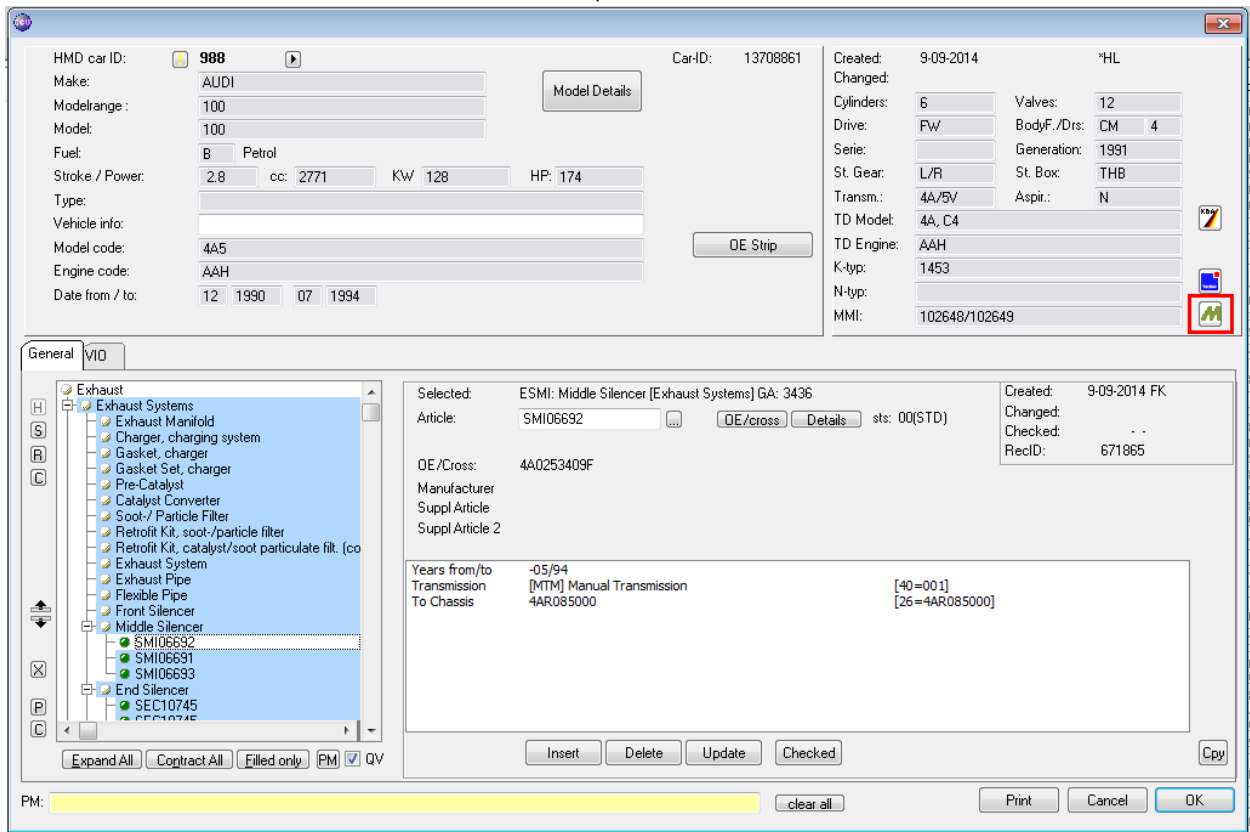
Expand All Contract All Filled only PM QV

Insert Delete Update Checked Cpy

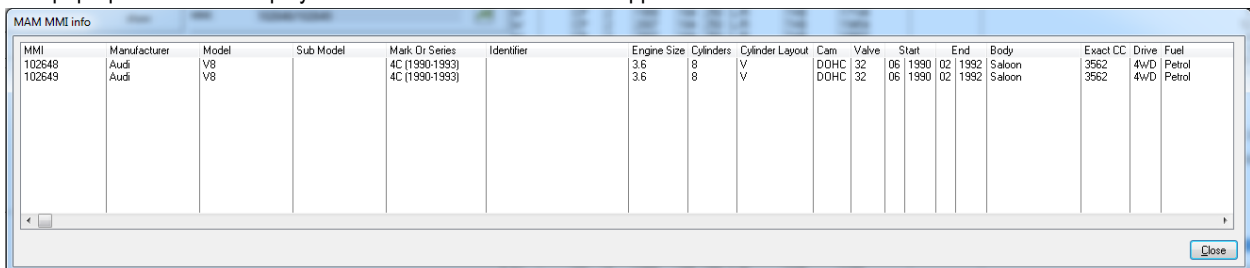
PM: clear all Print Cancel OK

MAM information

In the Application window, a pop-up screen can be opened to view MAM information by clicking the MAM button. The MAM button can't be used when there is no valid subscription.



This pop-up window will display the matched MMI number and Application details.



Modifications: Product Application & Data Export Run Selection


See Selection / configurations from other users

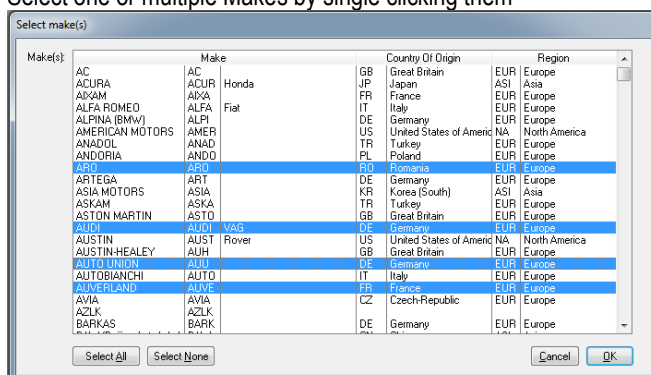
When configuring the Product Application & Data Export Run, it is now possible to see the selections / configurations from other users. These selections / configurations can be chosen to export.

Run number	Description
1	UPDATE PE (Tenneco, 1150) - Exhaust
6	Interne Controle - Exhaust
7	Testfile PE (Continental, 1340) - Fuel Pump
8	Testfile PE (Bosal, 1007) - Exhaust
9	Testfile PE (Twinec, 5613) - Exhaust
10	UPDATE PE (Francaise de Pieces) - Turbo charger
11	UPDATE PE (Airtex UCI- USA, 6171) - Fuel Supply System
12	Testfile EX (Tenneco, 01150) - Exhaust Particle Filter incl. Tenneco Carparc countries
13	Testfile PE (Vived, 6229) - Exhaust
14	Testfile PE (Airtex, 06171) - Fuel pump
15	Testfile PE (BTN Turbo, 6194) - Turbo Charger
16	UPDATE PE (T emot, 1039) - Fuel Supply
17	Testfile AGC (windscreen, 6296)
18	UPDATE PE (Delphi, 1100) - Fuel Supply
19	Article merge (EGEP, EMSR)
20	SCC/SFS
21	Tenneco DR
22	Saint Gobain
23	Test WS/NM
24	SCH
25	UPDATE PE (Mahle, 1693) - Exhaust (charger)
27	TEST2
28	MG ZR
29	Testfile PE (Cardone, 5612) - Turbo Chargers

Select multiple Makes

Now multiple Makes can be chosen when configuring a new Export Run.

1. Open CCU
2. Navigate to Catalog > Product Application & Data Export Run Selection parameters
3. Click the 'Insert' button
4. Click the  icon near the Makes field
5. Select one or multiple Makes by single clicking them



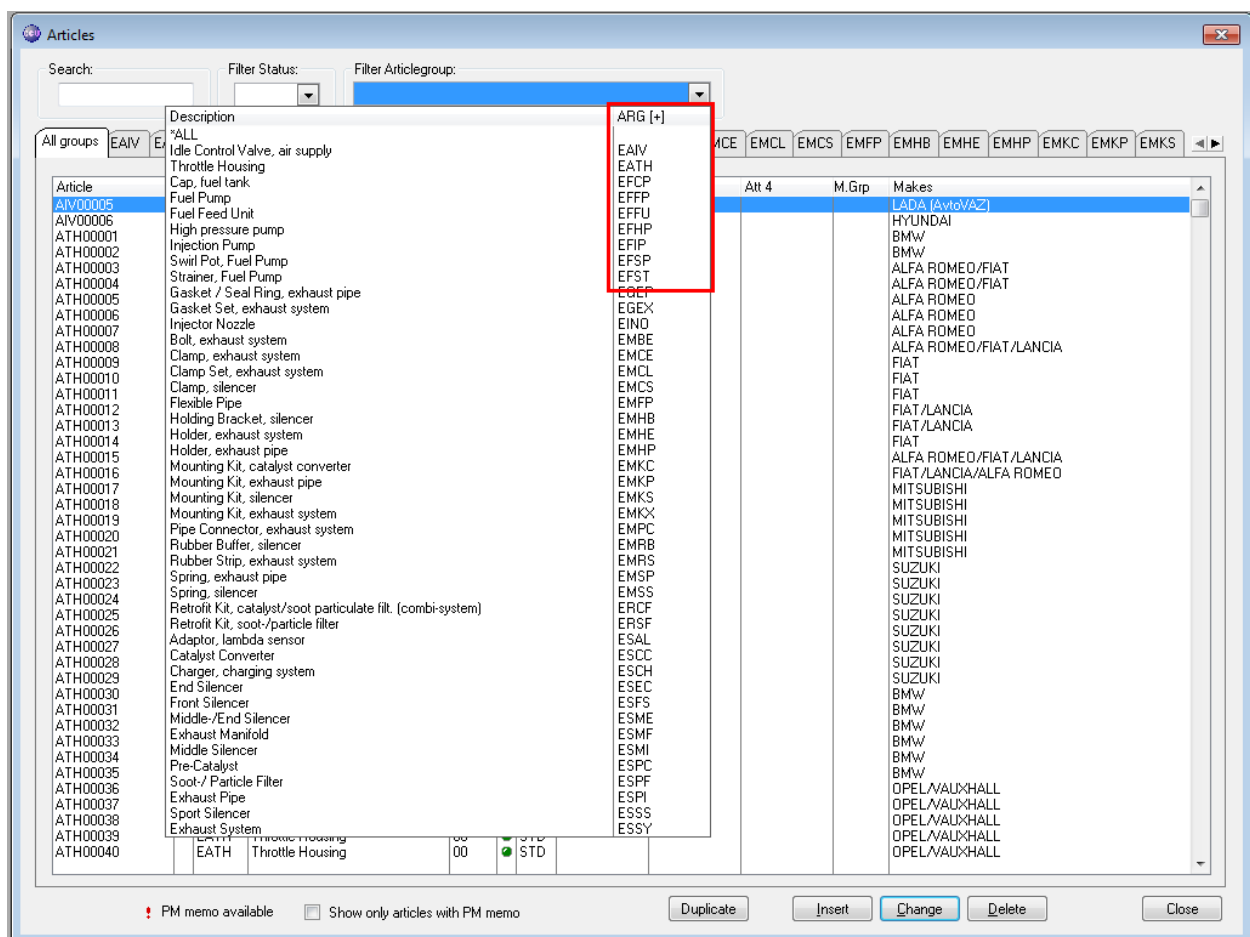
Make(s):	Make	Country Of Origin	Region
AC	AC	GB	Great Britain
ACURA	ACUR	JP	Japan
ADAM	ADPA	FR	France
ALFA ROMEO	ALFA	IT	Italy
ALPINA (BMW)	ALPI	DE	Germany
AMERICAN MOTORS	AMER	US	United States of America
ANADOL	ANAD	TR	Turkey
ANDORIA	ANDO	PL	Poland
ASRO	ASRO	RO	Romania
ARTEGA	ART	DE	Germany
ASIA MOTORS	ASIA	KR	Korea (South)
ASKAM	ASKA	TR	Turkey
ASTON MARTIN	ASTO	GB	Great Britain
AUDI	AUDI	DE	Germany
AUSTIN	AUST	US	United States of America
AUSTIN-HEALEY	AUH	GB	Great Britain
AUTO UNION	AUIU	DE	Germany
AUTOBIANCHI	AUTO	IT	Italy
AUTERLAND	AUDE	FR	France
AVIA	AVIA	CZ	Czech-Republic
AZLK	AZLK	DE	Germany
BARCAS	BARC	DE	Germany

6. Configure the remaining Export Run settings
7. Save the Export Run settings by clicking the OK button
8. Now the Export Run can be started using the Catalog > Product Application & Data Export Run window

Sort on ARG in Articles Window

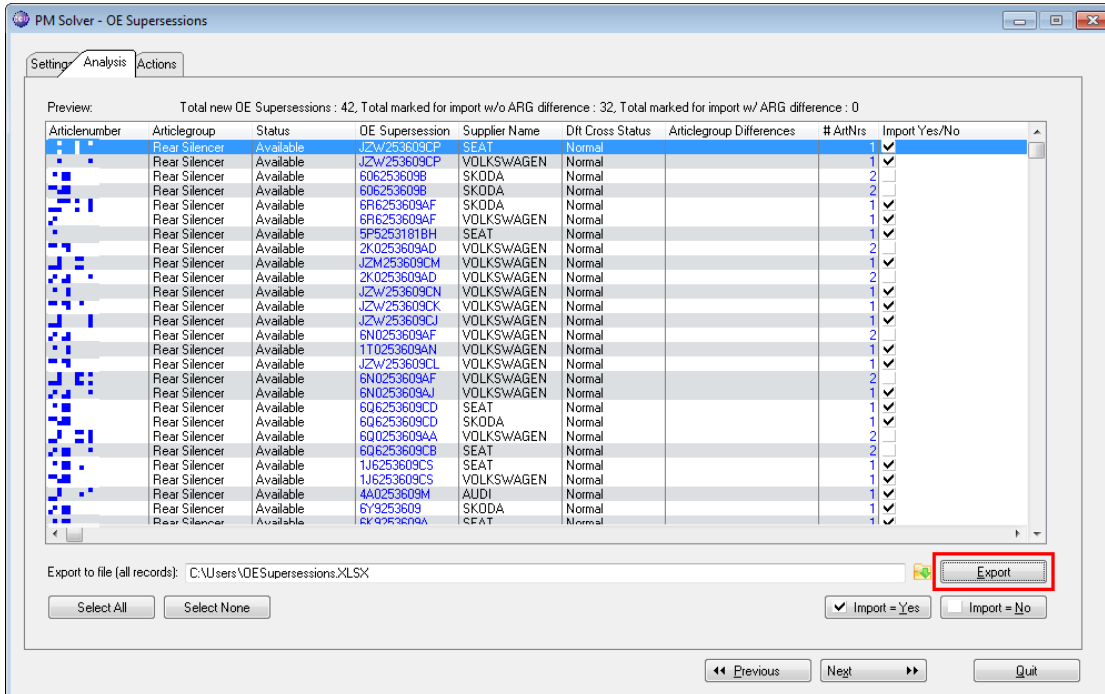
When using the Filter Articlegroup function in the Articles window (F2), the sorting order can be changed. The results used to be sorted on the Description column, but now they also can be sorted on the ARG column.

1. Open CCU
2. Open the Articles window (F2)
3. Click in the Filter Articlegroup field
4. In the dropdown list, click on the ARG column name once to sort the column on alphabetic order
5. Click the same column once more to sort the column on reverted alphabetic order



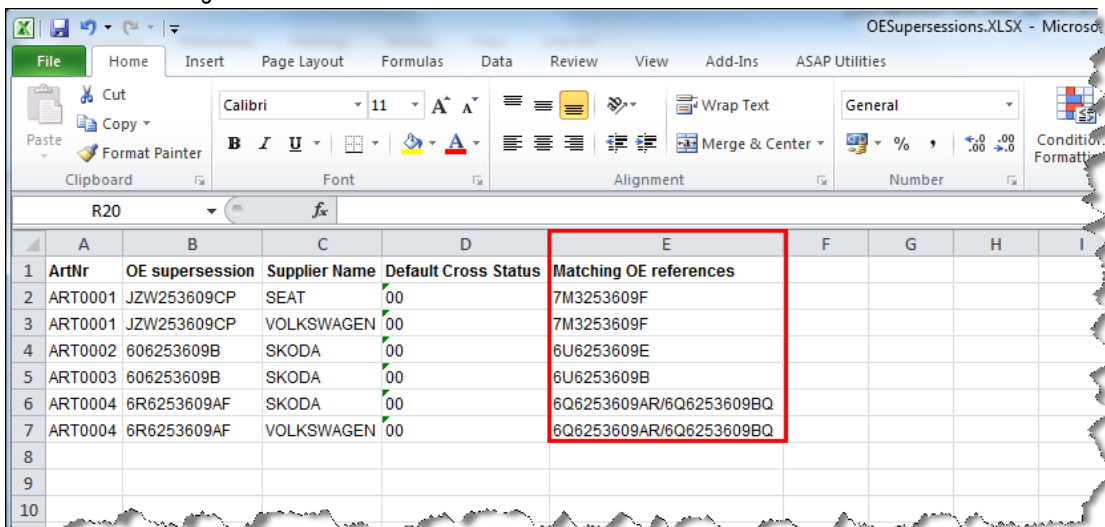
PM Solver OE Supersessions

The Excel Export of the 'PM Solver OE Supersessions' tool in CCU has been expanded with all the OE numbers where the match between the OE article and your article has been made on. To do this, simply click the Export button on the second sheet of the OE Supersessions, like you're used to.



Excel Export

Now, in the newly created Excel export, you can see not only the new to be added OE number in column B – OE Supersession, but also the Matching OE references in column E.



Changelog

For a full list of changes, in addition to the ones outlined in this document, please review the changelog below. If you have any questions about the changelog please contact Headline Helpdesk for more information.

TYPE	DESCRIPTION
CHANGED	: Article status and Cross status expanded to 5 positions
ADDED	: Added MMI to HMD export
ADDED	: Tecdoc criteria in QuickView
ADDED	: PM-memo to Export multiple articles extended
ADDED	: TecDoc status to Export multiple articles extended
ADDED	: Textfield to Export multiple articles extended
ADDED	: Status selection override for Export multiple articles extended
ADDED	: Wildchar on article selection for Export multiple articles extended
ADDED	: Copy button on Cross Browse screen
ADDED	: Transmission on HMD level
ADDED	: Aspiration on HMD level
ADDED	: Ntyp for HMD / Ktyp export
ADDED	: Glossary for HMD fields
ADDED	: Pop-up screen for MAM information
ADDED	: PM-solver OE Supersession export to Excel
ADDED	: View function for Product Application & Data Export Run
ADDED	: /Q parameter for supervisor batch to run CCUCMD command
ADDED	: Check mark on article applications
ADDED	: Multiple Make selection for Product Application & Data Export Run
ADDED	: Sort fields for articlegroup filter on article browse
CHANGED	: Multiple language selection for compression catalog
CHANGED	: Print layout for TD application print
FIX	: Description when copying article tree
FIX	: Date format for article attributes on browse

Headline Database Service bv
Headline Software Technology bv

Horsterweg 24
6199 AC Maastricht Airport
The Netherlands

Tel.: +31 433 650 212
Fax: +31 433 650 125
Internet: www.headlineweb.nl
E-mail: info@headlineweb.nl