

## What's new in this edition

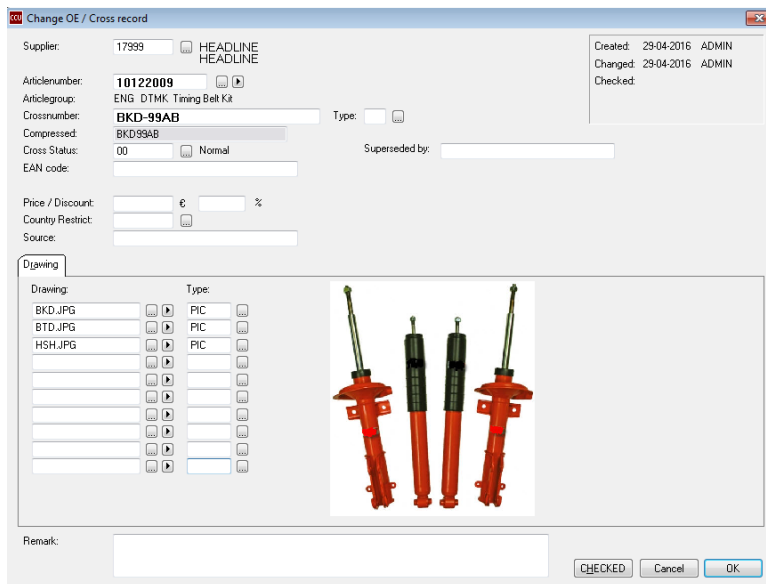
Here at Headline we always appreciate your feedback and constructive criticism. Along with general improvements in features and bug fixes we picked the best suggestions and incorporated them in the CCU software for all our customers. The main changes from last time include:

- Drawings on crossings
- New functions in the Application/Article export
- New Export Tables options
- Text modules activation on Application attribute level
- Sorting options for Print TD options
- Option to exclude data in Import Article Status
- Copy attributes to all other ARG's in HAG

## Drawings on crossings

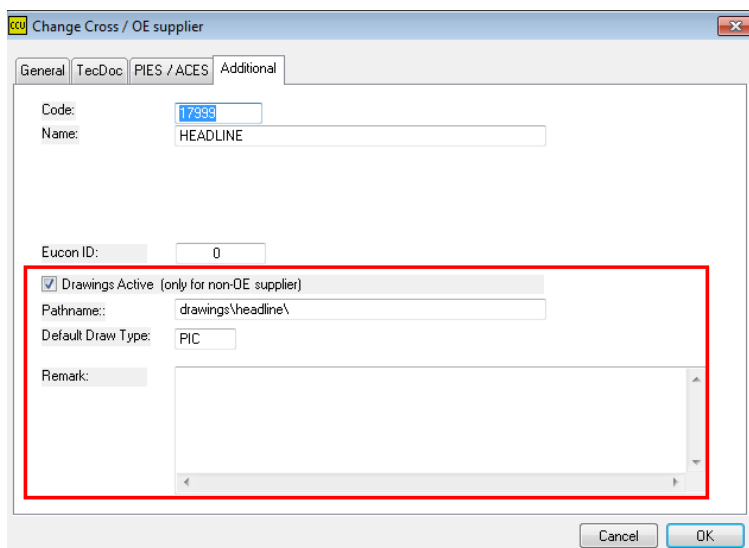
You can now maintain up to ten drawings on cross-supplier level. If this cross-supplier is configured as an alternative brand these drawings will also be exported to TecDoc.

Please note that you can't configure separate folders for each existing OE supplier. For cross-suppliers this isn't a problem.



To configure the above you can follow these steps:

1. Open CCU SV
2. Select **Internal tables** and open the **Suppliers** window
3. Select a **OE supplier**
4. Navigate to the sheet **Additional**
5. Check **Drawings Active**
6. Enter a **Pathname** for the **alternative drawings**
7. Choose a **Default Draw Type**
8. Optionally enter a **remark**

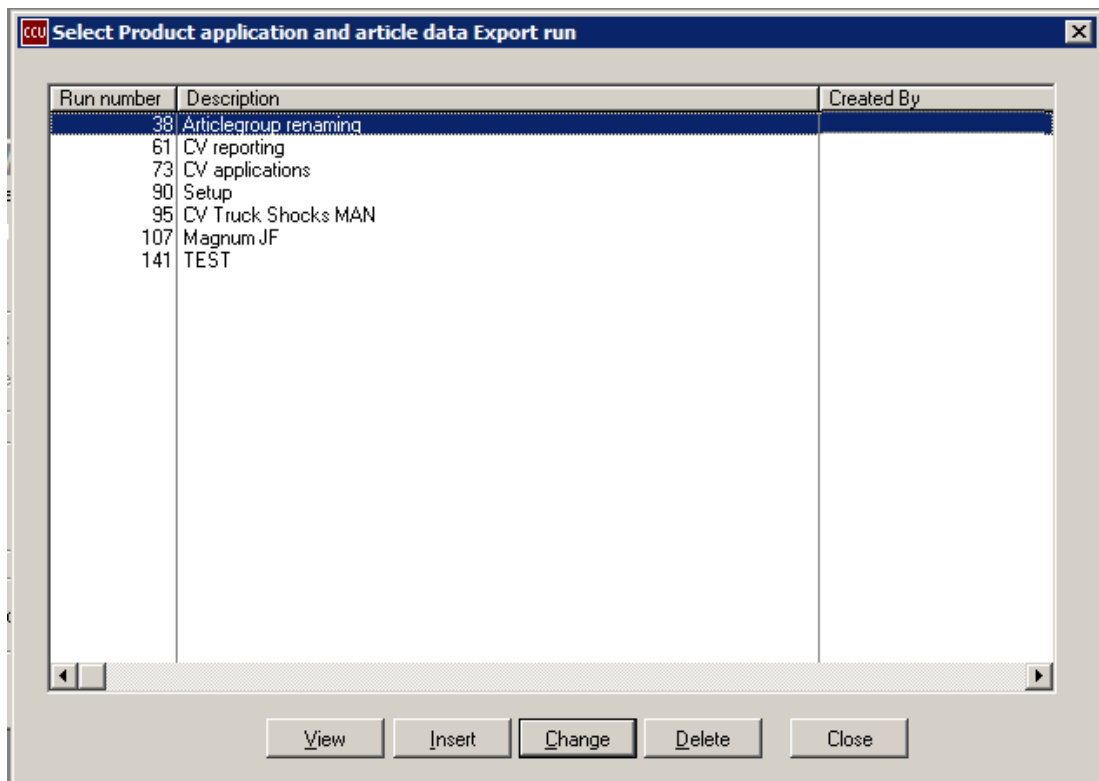


## New functions in the Application/Article export

### Permissions of the delete button

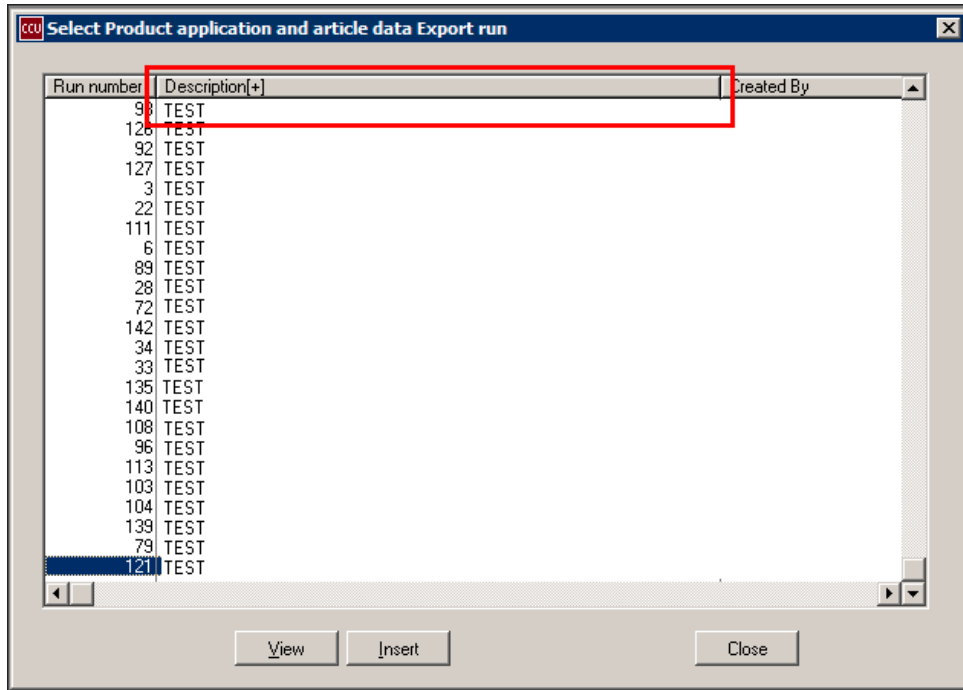
In this export (Product application and article data Export run) there is the option to delete the configured runs. We have updated this function with user permissions. Users can only delete configured runs if they created them themselves. So **User A** can only delete the export run if it is created by **User A**.

You can find this option in **CCU > Catalog > Product application and article data Export run selection parameters**



### Sorting of saved Exports

In the **Product application and article data Export run selection parameters** window all the configured Exports runs are displayed. These runs can now be sorted on the columns Run Number, Description or Created By. This will make it easier to find the right Export Run and alter it.



## Updated Export file

The Export will be saved as an Excel file. In this file you can see several columns. The column **Level (P)** was limited to a given number of characters. Due to this it could happen that the level missed some characters and could be very confusing.

We have updated this column so it can store more characters and all the levels are fully readable.

Level
Springs and Spheres
Kits
Springs and Spheres
Kits
Springs and Spheres
Kits
Springs and Spheres
Kits

## New Export Tables options

In CCU you can Export Tables through the **CCU > Reports / Exports > Export Tables** option. We have added two additional options to this function.

- **Text Modules**

This will export the naming of all the Definitions for each configured language in your CCU

NS278	German	3 Montagelöcher
NS278	English	3 mounting holes
NS278	French	3 mounting holes
NS278	Italian	3 mounting holes
NS278	Spanish	3 mounting holes
NS278	Dutch	3 Montagelöcher
NS278	Danish	3 Monteringshuller
NS278	Swedish	3 mont.hål

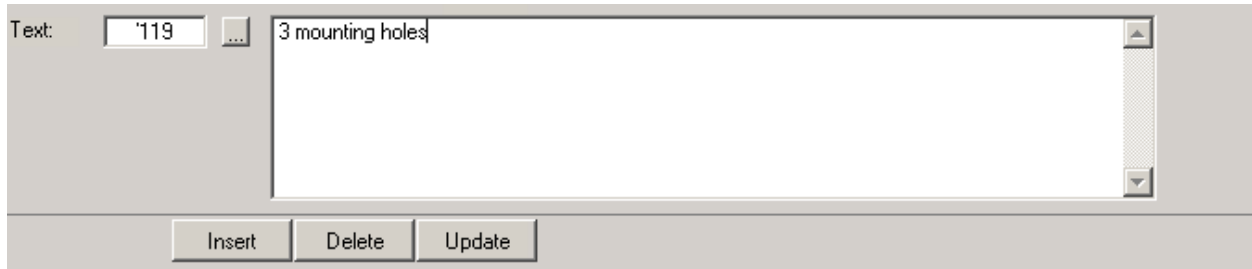
- **Commercial Remarks**

This will export the commercial remarks that are configured in your CCU version (e.g. brand / model names)

TextID	Language	Text
FP056	Universal	TOP BRAND HILL
FP057	Universal	DOOR MOUNTING
FP058	Universal	HEADLINE VAN's
FP059	Universal	HEADLINE Heavy

## Text modules activation on Application attribute level

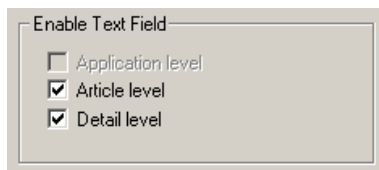
We have added a text field on the Application Attribute Level. You can see and use this text field when you open an Article through the article tree on an Application. From here the tab **Text** will be visible. These values can also be exported using the CCUTD module.



## Configuration

To use this new feature you need to activate it using the CCUSV module.

1. Open CCUSV
2. Navigate to **Internal Tables** and open **Head Article Groups**
3. Select an Article Group
4. Enable the Checkbox **Detail Level** in the **Enable Text Field** section



5. Save and Close

## Sorting options for Print TD options

When viewing an Article in CCU you have the option to print the TD Application using the **Print TD Application** button. We have added a new window when you click this button in which you can choose the preferred sorting order. This sorting will be saved for future prints, but can always be altered.

You can find this option in **CCU > Articles > Select Article > Print TD Applications**

**Select print options:**

sort:

TecDoc K-/N-Typ

Make/Model/Fuel/Stroke

Save + Close



## Option to exclude data in Import Article Status

In the CCUSV module it is possible to import article statuses using the **Import Article Status** option. This can be done using a **Text** or **Excel** file. We have added the option to exclude import data based on configured statuses. In CCUSV you can exclude these statuses for the import by enabling the checkbox **Allow for Bulk Import**.

You can start the import in: **CCUSV > Special (Restricted Use) > Import Article Status file (STS.TXT)**

You can exclude statuses in: **CCUSV > Internal Tables > Article Status (STS) > Select Status**

The screenshot shows the 'Change status' dialog box with the following fields and options:

- Article Status: 35
- Description: TEST
- Alternate Descr.: TEST
- TecDoc Status: [empty]
- TecDoc Description: [empty]
- Short Description: TST
- Options:
  - Ask for 'superseded by!':
  - Hide for normal users:
  - Allow HL update:
  - Allow for Bulk Import:**
  - Include in Catalog/Export-Run:
  - Include in Cross list:
  - Include in TD export:
  - Include in TD export Unlinked:
  - Include in WebExport:
  - Include in UKPA export:
  - Include in PIES export:
  - Include in MAM export:
  - Include in PM solver:
  - Include in Exchange export:
- Analysis:
  - = In Preparation:
  - = Communicated:
- Available (gap analysis):
- Initiate LAG generation:
- Approval and Validation Check NPC button:
- Manufacturing Preparation Log:
- Extensions Emission Control Log:
- Interface Fixed Value:
- PIES Lifecycle code: [empty]
- translate to: [empty]
- Icon Color on application:
  - White, Yellow, LightBlue, Green
  - Silver, Orange, Blue, Darkgreen
  - Night, Red, Purple, Maroon

Buttons: Cancel, OK



## Changelog

For a full list of changes, in addition to the ones outlined in this document, please review the changelog below. If you have any questions about the changelog please contact Headline Helpdesk for more information.

TYPE	DESCRIPTION
ADDED	: Supersession Undo function
ADDED	: Cross drawings export to TecDoc when Alternate Brand
ADDED	Batch option /IS
ADDED	Multiple Article group selection on NLP Analysis
ADDED	Incremental Locating of article group on article browse screen
ADDED	Up to 5 columns x 15 rows additional article attributes (RC attributes)
ADDED	Base GenArt in article group selection windows
ADDED	User level authorization to delete article with linked vehicles
ADDED	Attribute overrule different Brand in TecDoc export
ADDED	TecDoc Engines
ADDED	TecDoc Plus Engines
ADDED	Cross Export Drawings
CHANGED	: OE number shown on application screen uses OE number with indication 'L'
CHANGED	Import Status file only imports statuses with 'Allow for Bulk Import'
CHANGED	TecDoc export takes into account Level sequence for LfdNr calculation
CHANGED	TecDoc export split 205/222 (Parts list / Accessory list)
CHANGED	Added GenArt description to extended article export
FIX	U2 report manual Ktyp selection

### Headline Database Service bv Headline Software Technology bv

Horsterweg 24  
6199 AC Maastricht Airport  
The Netherlands

Tel.: +31 433 650 212  
Fax: +31 433 650 125  
Internet: [www.headlineweb.nl](http://www.headlineweb.nl)  
E-mail: [info@headlineweb.nl](mailto:info@headlineweb.nl)