

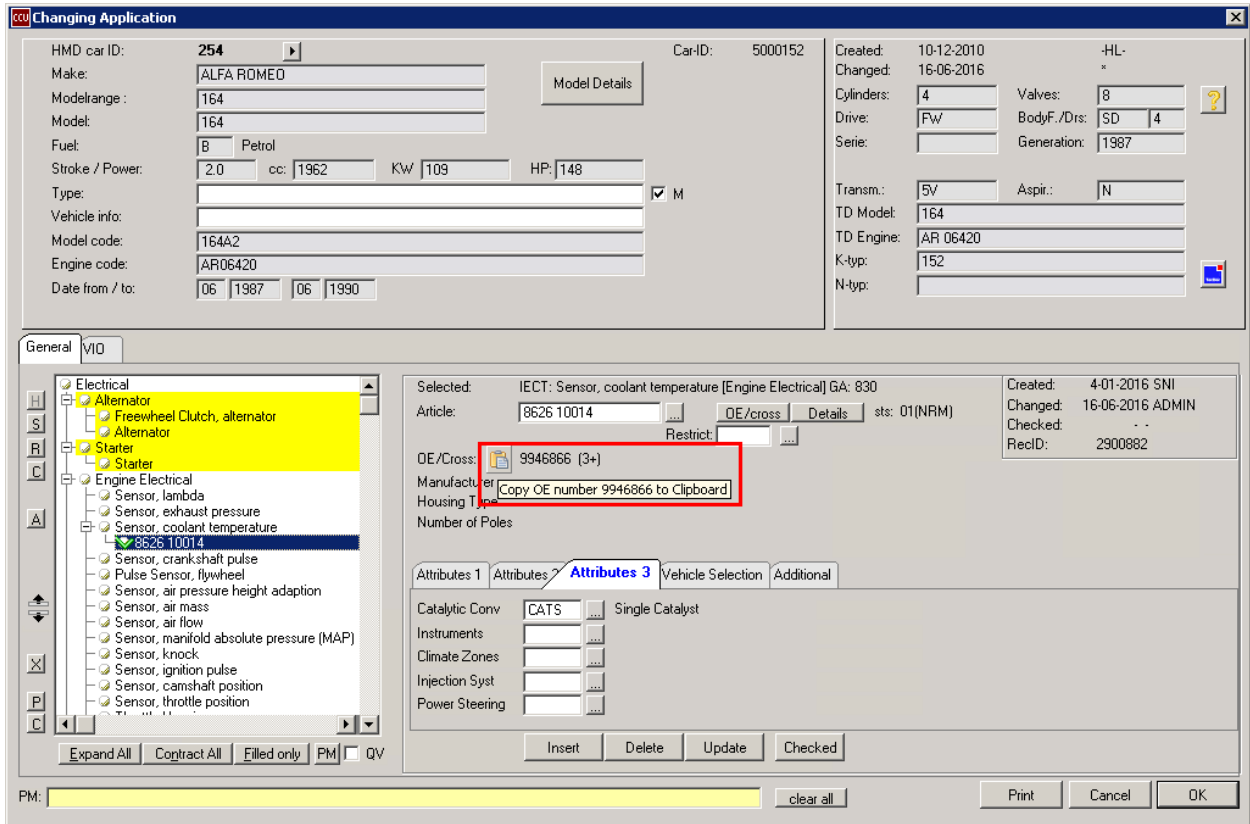
## What's new in this edition

Here at Headline we always appreciate your feedback and constructive criticism. Along with general improvements in features and bug fixes we picked the best suggestions and incorporated them in the CCU software for all our customers. The main changes from last time include:

- Copy OE/Cross/Articlenumber to clipboard functions
- Multi-select in Change article screen
- Add/Find article by OE on multi-select (for 1 make)
- Colored sheet for filled attributes on Article level
- PM solver - Supersessions records lock

## Copy OE/Cross/Article number to clipboard functions

When an article number is selected in the Changing Application screen the shown OE reference, with the corresponding Make and indication "L" (last), can be copied to a clipboard using the clipboard functionality / button. Also see the red lining below.

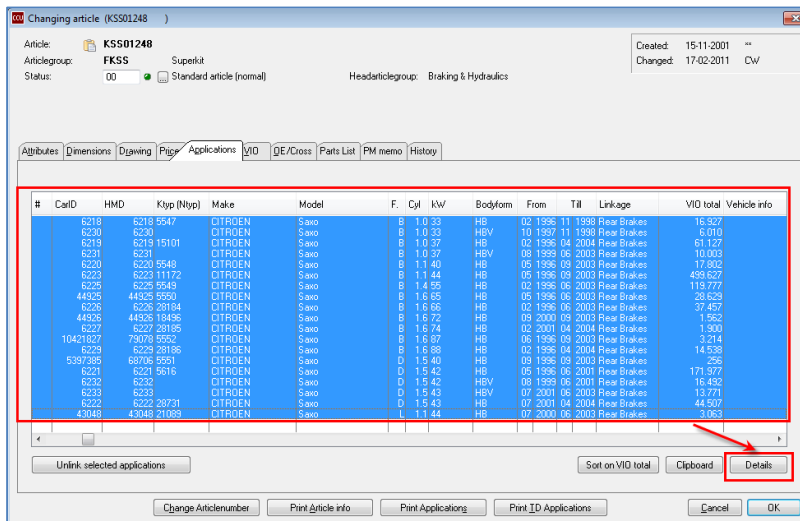


The screenshot shows the 'Changing Application' window. The top section contains vehicle identification fields: HMD car ID: 254, Car-ID: 5000152, Make: ALFA ROMEO, Modelrange: 164, Model: 164, Fuel: B Petrol, Stroke / Power: 2.0 cc: 1962 KW 109 HP: 148, Type: [checkbox] M, Vehicle info: [empty], Model code: 164A2, Engine code: AR06420, Date from / to: 06 1987 06 1990. On the right, there are engine specifications: Cylinders: 4, Valves: 8, Drive: FW, BodyF./Drs: SD 4, Serie: [empty], Generation: 1987, Transm.: 5V, Aspir.: N, TD Model: 164, TD Engine: AR 06420, K-typ: 152, N-typ: [empty].

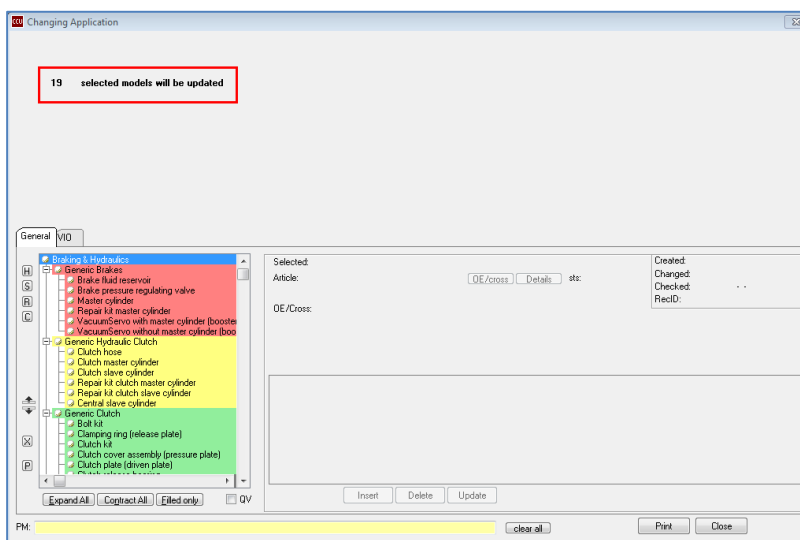
The 'General' tab is active, showing a tree view on the left. The 'Electrical' folder is expanded, and 'Sensor, coolant temperature' is selected, with article number '8626 10014' highlighted. The right pane shows details for this article: Selected: IECT: Sensor, coolant temperature [Engine Electrical] GA: 830, Article: 8626 10014, OE/cross: 9946866 (3+), Manufacturer: [empty], Housing Type: [empty], Number of Poles: [empty]. A red box highlights the 'OE/cross' field with the text '9946866 (3+)' and a tooltip that says 'Copy OE number 9946866 to Clipboard'. Other fields include Created: 4-01-2016 SNI, Changed: 16-06-2016 ADMIN, Checked: [empty], and RecID: 2900882. At the bottom, there are buttons for 'Insert', 'Delete', 'Update', 'Checked', 'clear all', 'Print', 'Cancel', and 'OK'.

## Multi-select in Change article screen

It is now possible to select multiple applications in the Changing article screen and open them as multi-select in the Changing Application screen. This is especially handy if you want to create a parts list and also want to link these parts according to the applications of the main article.



In the screen below you can now update all the applications based on the selection you made on the changing article screen.

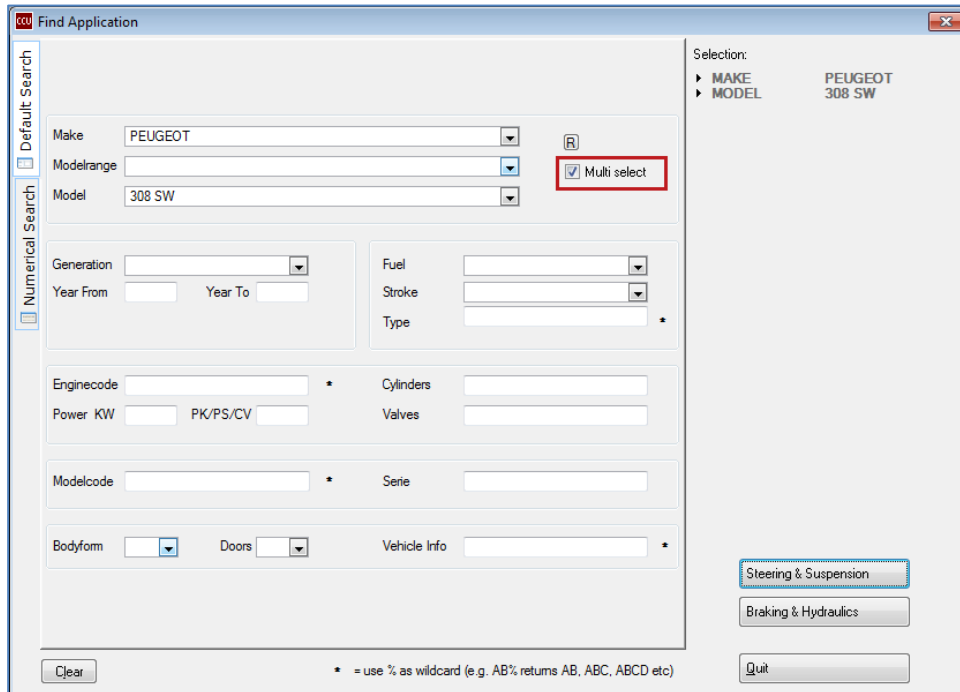


## Add/Find article by OE on multi-select (per make)

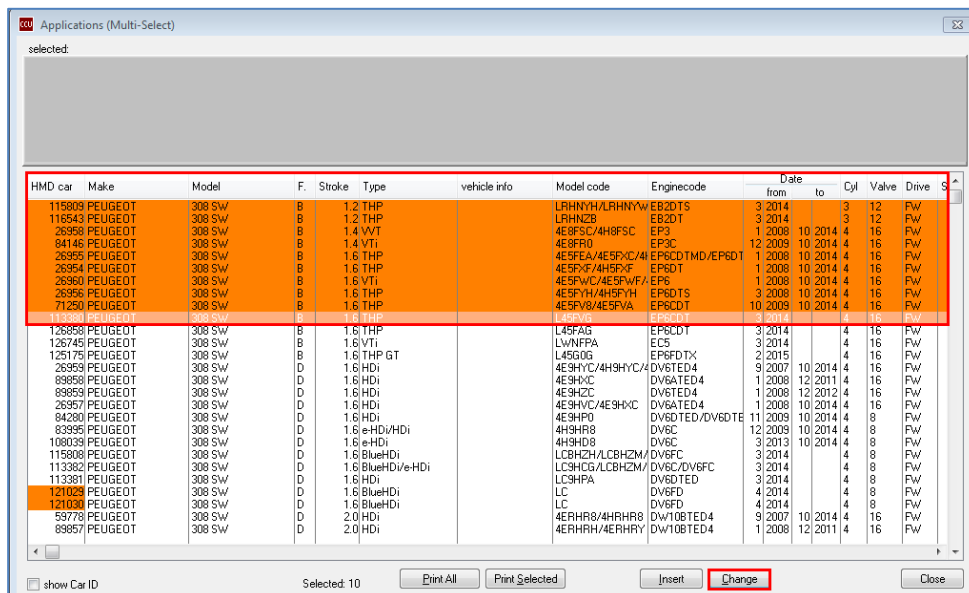
In the Find Application [F3] screen a Multi select option is added.

To be able to use this new functionality you have to select first a Make / Model.

After desired Make/Model is selected check the Multi select checkbox and choose the concerning head article group.

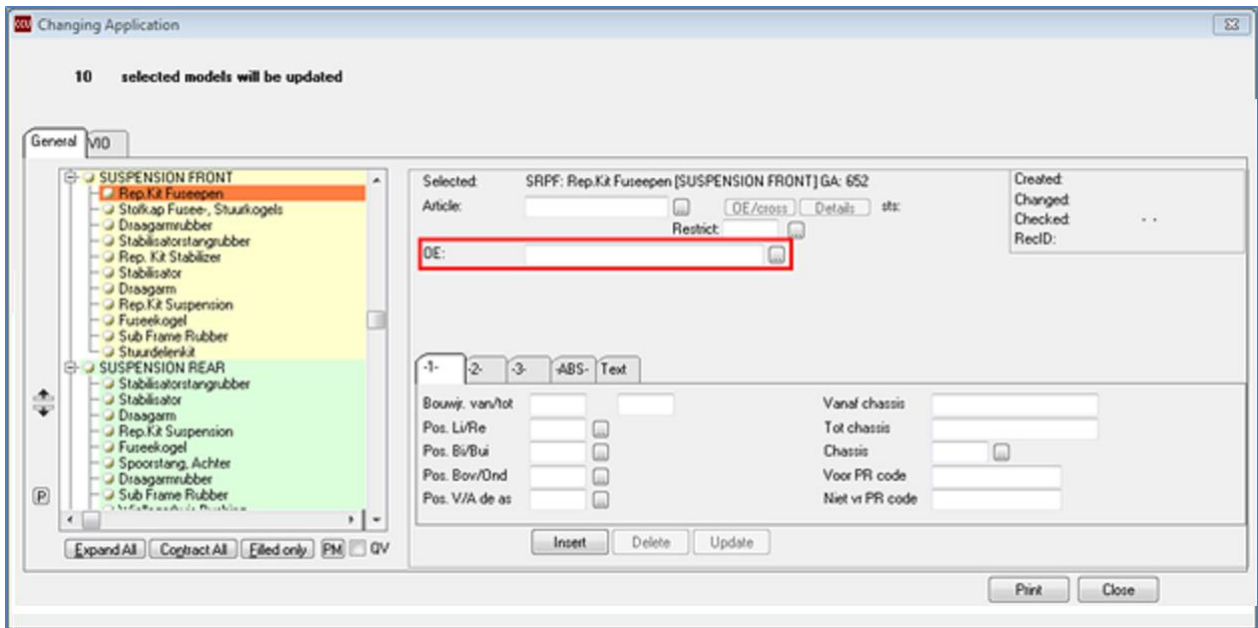


When HMD numbers are selected in the Applications (Multi-Select) screen press the [Change] button.



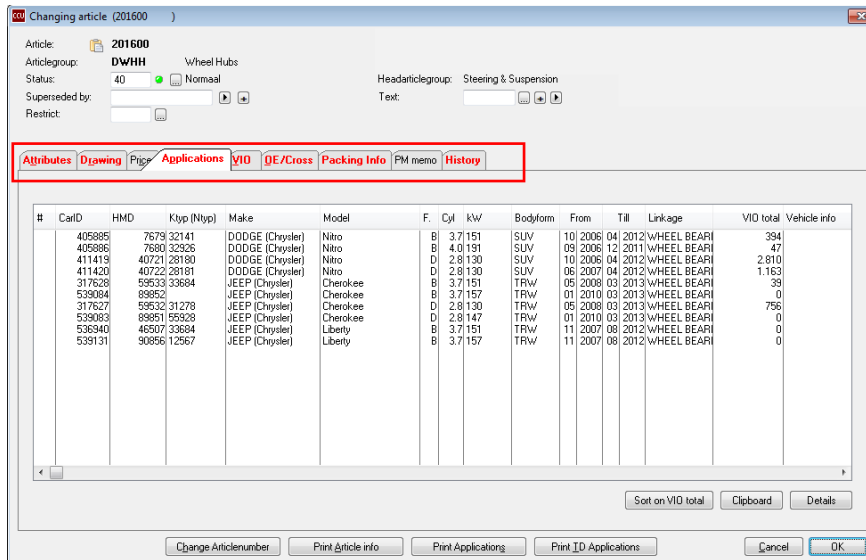
HMD	car	Make	Model	F	Stroke	Type	vehicle info	Model code	Enginecode	Date from	Date to	Cyl	Valve	Drive	S
115809	PEUGEOT	308 SW	B	1.2	THP			LRHNYH/LRHNYW	EB20TS	3 2014		3	12	PW	
116543	PEUGEOT	308 SW	B	1.2	THP			LRHNZB	EB20T	3 2014		3	12	PW	
26398	PEUGEOT	308 SW	B	1.4	VVT			4E8FSC/4H8FSC	EP3	1 2008	10 2014	4	16	PW	
64146	PEUGEOT	308 SW	B	1.4	VTI			4E9FR0	EP9C	12 2009	10 2014	4	16	PW	
26395	PEUGEOT	308 SW	B	1.6	THP			4E9FEA/4E9FKC/4I	EP6CDTMD/EP6DT	1 2008	10 2014	4	16	PW	
26394	PEUGEOT	308 SW	B	1.6	THP			4E9PXF/4H9PXF	EP6DT	1 2008	10 2014	4	16	PW	
26360	PEUGEOT	308 SW	B	1.6	VTI			4E9PWC/4E9PWF/	EP6	1 2008	10 2014	4	16	PW	
26356	PEUGEOT	308 SW	B	1.6	THP			4E9HYH/4H9HYH	EP6DTS	3 2008	10 2014	4	16	PW	
71260	PEUGEOT	308 SW	B	1.6	THP			4E9SV6/4E9SVA	EP6CDT	10 2009	10 2014	4	16	PW	
116393	PEUGEOT	308 SW	B	1.6	THP			4E9SV6	EP6CDT	3 2014		4	16	PW	
126838	PEUGEOT	308 SW	B	1.6	THP			L45FAG	EP6CDT	3 2014		4	16	PW	
126745	PEUGEOT	308 SW	B	1.6	VTI			LWNPFA	EC5	3 2014		4	16	PW	
125175	PEUGEOT	308 SW	B	1.6	THP GT			L45G0G	EP6DXTX	2 2015		4	16	PW	
26399	PEUGEOT	308 SW	D	1.6	HDi			4E9HYC/4H9HYC/	DV6TED4	9 2007	10 2014	4	16	PW	
89898	PEUGEOT	308 SW	D	1.6	HDi			4E9HXK	DV6ATED4	1 2008	12 2011	4	16	PW	
89899	PEUGEOT	308 SW	D	1.6	HDi			4E9HZC	DV6TED4	1 2008	12 2012	4	16	PW	
26397	PEUGEOT	308 SW	D	1.6	HDi			4E9HYC/4E9HXK	DV6ATED4	1 2008	10 2014	4	16	PW	
84290	PEUGEOT	308 SW	D	1.6	HDi			4E9HP0	DV6DTE/DV6DTE	11 2009	10 2014	4	8	PW	
83995	PEUGEOT	308 SW	D	1.6	e-HDi/VHDi			4H9HR8	DV6C	12 2009	10 2014	4	8	PW	
108039	PEUGEOT	308 SW	D	1.6	e-HDi			4H9HD8	DV6C	3 2013	10 2014	4	8	PW	
115808	PEUGEOT	308 SW	D	1.6	BlueHDi			LCBHZH/LCBHZM/	DV6FC	3 2014		4	8	PW	
113382	PEUGEOT	308 SW	D	1.6	BlueHDi/e-HDi			LC9KCG/LCBHZM/	DV6FC	3 2014		4	8	PW	
113381	PEUGEOT	308 SW	D	1.6	HDi			LC9HPA	DV6DTE	3 2014		4	8	PW	
121025	PEUGEOT	308 SW	D	1.6	BlueHDi			LC	DV6FD	4 2014		4	8	PW	
121030	PEUGEOT	308 SW	D	1.6	BlueHDi			LC	DV6FD	4 2014		4	8	PW	
59778	PEUGEOT	308 SW	D	2.0	HDi			4ERHR8/4HRHR8	DW10BTE4	9 2007	10 2014	4	16	PW	
89897	PEUGEOT	308 SW	D	2.0	HDi			4ERHRH/4ERHRY	DW10BTE4	1 2008	12 2011	4	16	PW	

Now an OE reference can be added via the Changing Application screen for selected Make / Models.



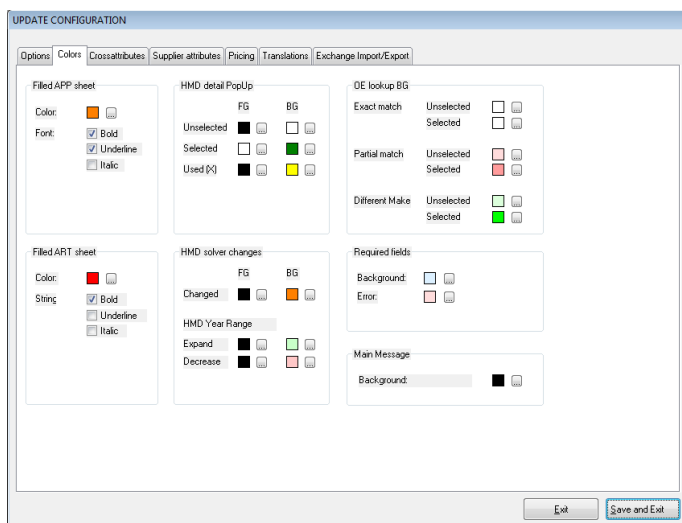
## Colored sheet for filled attributes on Article level

On Article level the color from headers, of sheets with filled attributes, can be set as desired. Also see the red lining in the print screen below.



To set a color for filled article attributes, please use the steps below. Also see the print screen below.

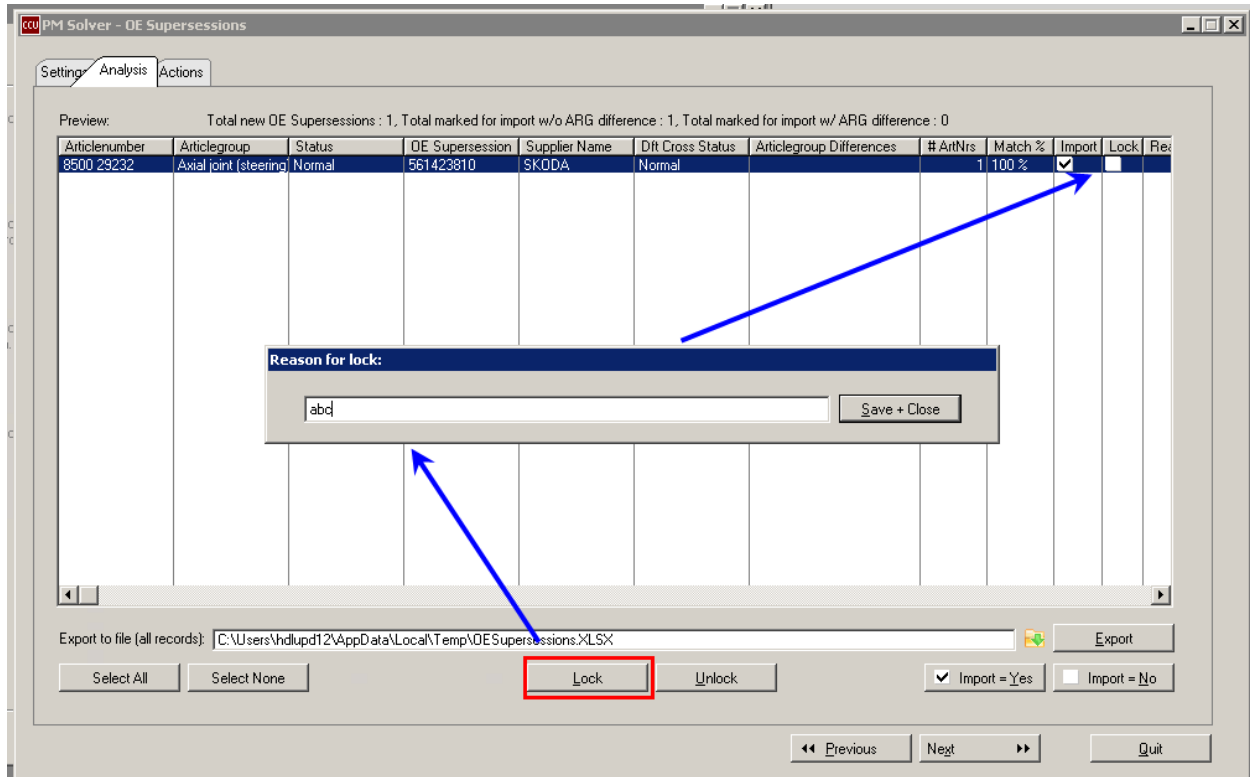
1. Open CCU SV
2. Select Internal Tables from menu
3. Select Configuration from the dropdown menu
4. Select Colors sheet and go to Filled ART sheet
5. Select desired color
6. Select whether displayed text should be **Bold**, Underline or *Italic*



**Please note:** activating this functionality requires extra performance of the server. So please only activate this functionality if the server has enough performance.

## PM solver – Supersessions records lock

When using the OE Supersessions analysis option from the PM solver Article numbers can be selected and locked to prevent them from being imported. When clicked upon the Lock button a pop-up-screen will open where you can add the reason why this article number is locked.



## Changelog

For a full list of changes, in addition to the ones outlined in this document, please review the changelog below. If you have any questions about the changelog please contact Headline Helpdesk for more information.

<b>TYPE</b>	<b>DESCRIPTION</b>
ADDED	Hide empty columns for Production application & article data export run
ADDED	Article Attributes 31..90 + extended to U2
ADDED	Colored sheet for filled attributes on Article level
ADDED	Option to delete OE/Cross from article screen
ADDED	Option to delete OE/Cross from ALT screen
ADDED	Add/Find article by OE on multi-select (for 1 make)
ADDED	Table values for RC fields
ADDED	Price valid from/to
ADDED	Default show 1st OE/Cross drawing on cross screen
ADDED	Copy OE/Cross/Article number to clipboard functions
ADDED	Product Class in Extended Article Export
ADDED	Option in article status to prevent articles with that status to be overwritten on Bulk Status update
CHANGED	Possibility to change generated article number on OE insert
CHANGED	Increase of 4 prices per article to 10
CHANGED	Price configuration
FIX	F5 copy function for extended attributes in supervisor module
FIX	Creation Date on Cross print
FIX	Bug for OE column in Extended Export for articlegroups without attributes



**Headline Database Service bv**  
**Headline Software Technology bv**

Horsterweg 24  
6199 AC Maastricht Airport  
The Netherlands

Tel.: +31 433 650 212

Fax: +31 433 650 125

Internet: [www.headlineweb.nl](http://www.headlineweb.nl)

E-mail: [info@headlineweb.nl](mailto:info@headlineweb.nl)