



Data Management Module (CCU)

One stop for product management and catalogue maintenance, with outstanding functionality

What's New In this Edition

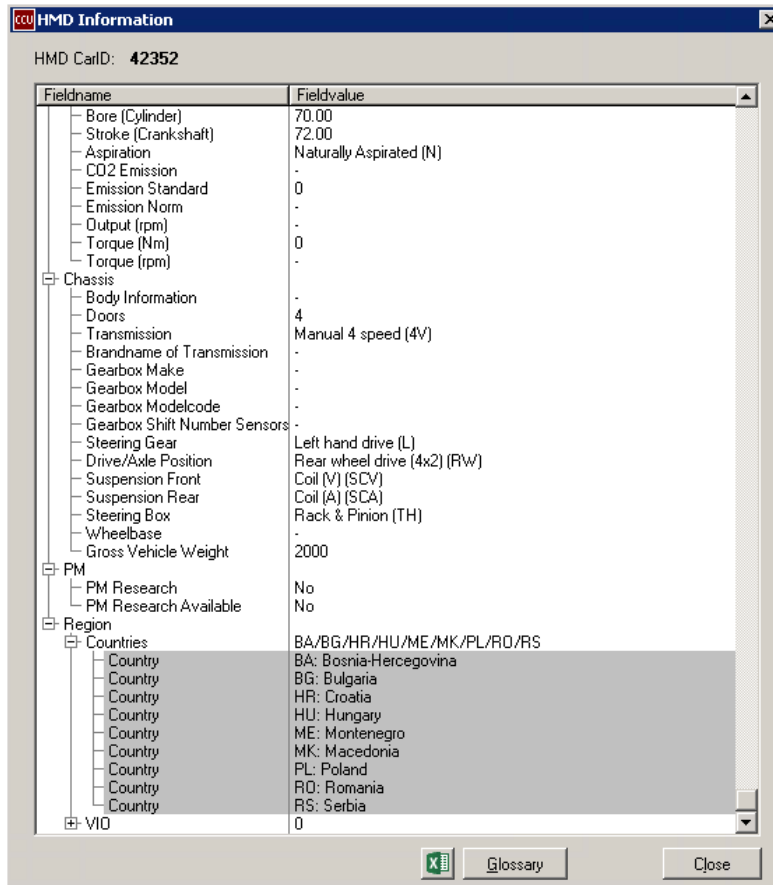
Here at TecAlliance we always appreciate your feedback and constructive criticism. Along with general improvements in features and bug fixes we picked the best suggestions and incorporated them in the CCU software for all our customers. The main changes from last two months include:

Contents

Country Descriptions on the HMD popup screen	2
/ZIP command parameter to TecDoc Export.....	2
Attribute priming for Application Attributes.....	3
Option to reload configuration settings.....	5
Set CCU read-only for all users when sending a message that starts with “@”	5
Column Generation on application browse article level.....	6
Option to add countries to country table	6
Changelog.....	7

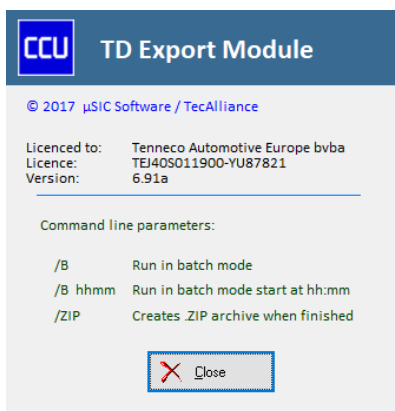
Country Descriptions on the HMD popup screen

The HMD popup screen always showed the countries only by ISO-code. From now on, it will also show the description of the ISO-code. This will make it more clear which countries are meant.



/ZIP command parameter to TecDoc Export

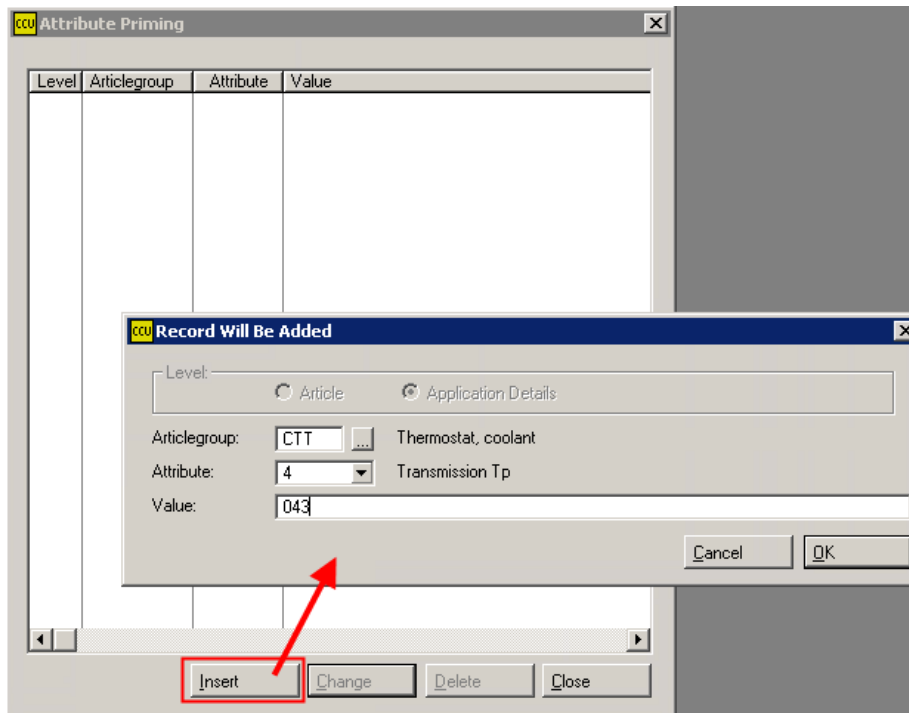
For the TecDoc Export there's a new function available to ZIP the .DAT files after exporting them from the TecDoc Export Module via a batch file. The command /ZIP will automatically ZIP the .DAT files.



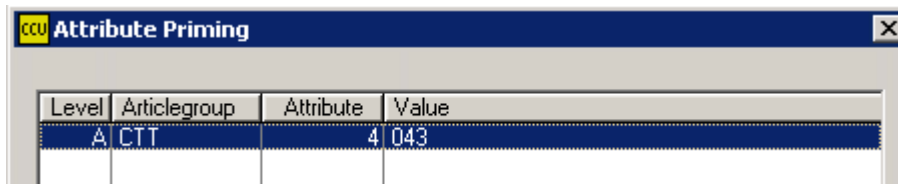
Attribute priming for Application Attributes

With Attribute Priming you can set a default value for an attribute when making a new article within a specific articlegroup. Attribute Priming can be accessed via the CCU Supervisor Module via Internal tables > Attribute Priming (APR).

Example; how to create a default:

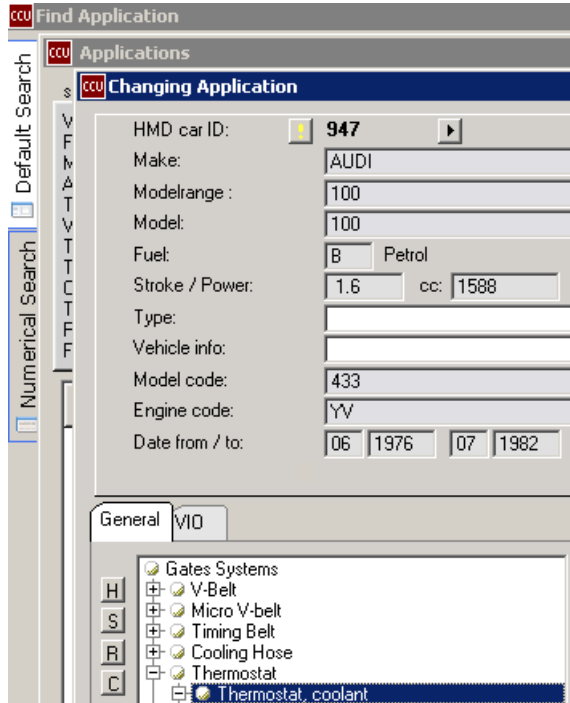


After pressing OK, it will be shown as below:

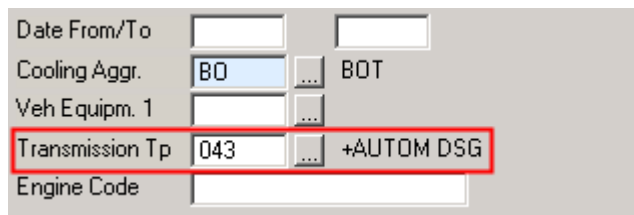


After this, when you create an article for a Thermostat the Transmission Tp attribute will be filled by default.

Go to the CCU User Module and search an application and navigate in the article tree to Thermostat like the picture below:

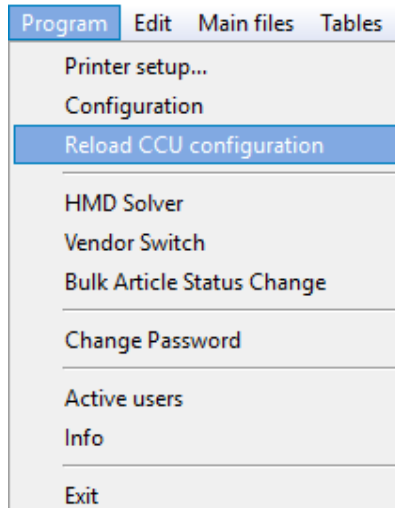


Create a new article for the Thermostat and you will see that the attribute Transmission Tp is filled by default.



Option to reload configuration settings

It's possible to reload the configuration settings of CCU without restarting the CCU User Module.

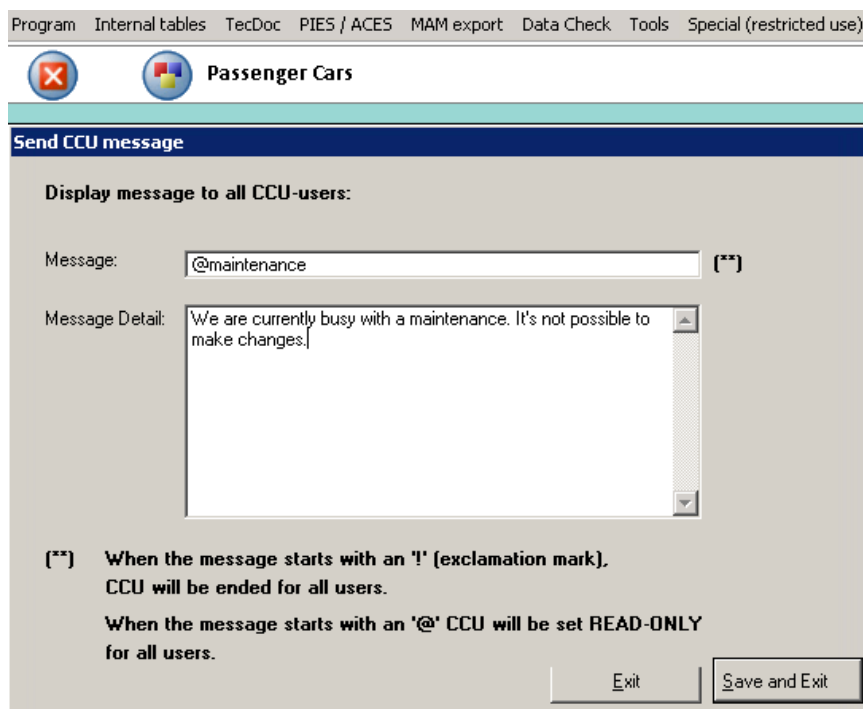


Set CCU read-only for all users when sending a message that starts with "@"

To set CCU as read-only for all users you can set a message via de CCU Supervisor Module that starts with @.

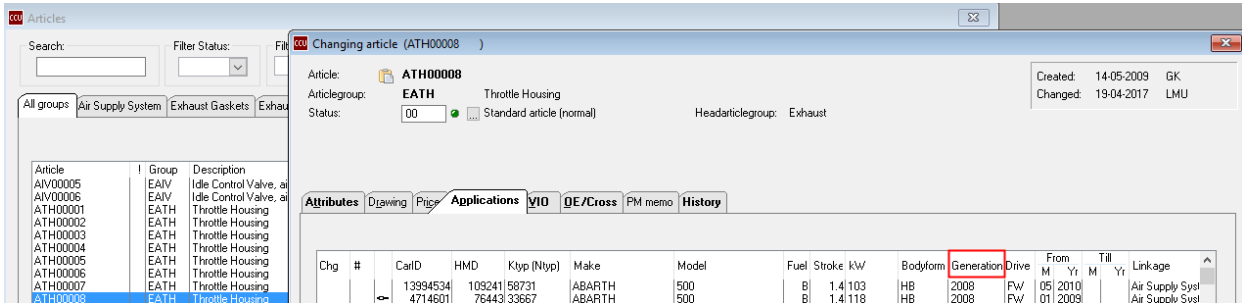
When this is activated, users can keep on using CCU, but can't make any changes.

To set a message via the CCU Supervisor Module, navigate to: Program > Message.



Column Generation on application browse article level

On the tab “Applications” at the “Changing article” screen there’s a column added with the name “Generation”. It’s now possible to see the generation of an application at the “article screen”.



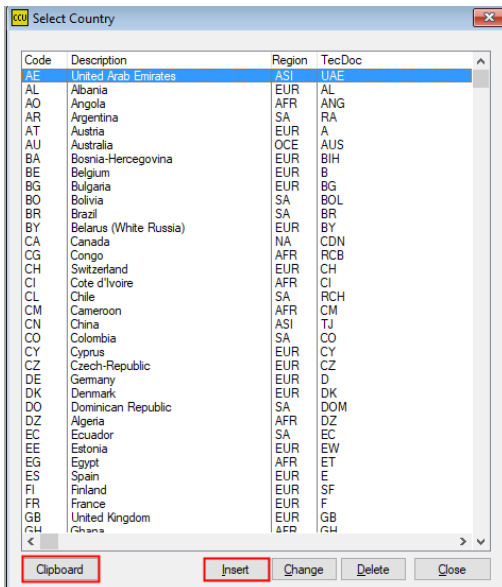
The screenshot shows the 'Changing article' window for article ATH00008. The 'Applications' tab is active, displaying a table with columns: Chg #, CarID, HMD, Ktyp (Ntyp), Make, Model, Fuel, Stroke kW, Bodyform, Generation, Drive, From M Yr, Till M Yr, and Linkage. The 'Generation' column is highlighted with a red box. The table contains two rows of data for article ATH00008.

Chg #	CarID	HMD	Ktyp (Ntyp)	Make	Model	Fuel	Stroke kW	Bodyform	Generation	Drive	From M Yr	Till M Yr	Linkage
	13994534	109241	58731	ABARTH	500	B	1.4 103	HB	2008	Pw	05 2010		Air Supply Syst
	4714601	76443	33667	ABARTH	500	B	1.4 118	HB	2008	Pw	01 2009		Air Supply Syst

Option to add countries to country table

With this function it’s possible to add TecDoc countries. This can be done via the CCU Supervisor Module. To use this function, navigate to: Internal tables > Countries.

For this function there are now 2 extra buttons. (Clipboard and Insert)



The screenshot shows the 'Select Country' dialog box with a list of countries and their TecDoc codes. The 'Clipboard' button at the bottom is highlighted with a red box.

Code	Description	Region	TecDoc
AE	United Arab Emirates	ASI	UAE
AL	Albania	EUR	AL
AO	Angola	AFR	ANG
AR	Argentina	SA	RA
AT	Austria	EUR	A
AU	Australia	OCE	AUS
BA	Bosnia-Herzegovina	EUR	BIH
BE	Belgium	EUR	B
BG	Bulgaria	EUR	BG
BO	Bolivia	SA	BOL
BR	Brazil	SA	BR
BY	Belarus (White Russia)	EUR	BY
CA	Canada	NA	CDN
CG	Congo	AFR	RCB
CH	Switzerland	EUR	CH
CI	Cote d'Ivoire	AFR	CI
CL	Chile	SA	RCH
CM	Cameroon	AFR	CM
CN	China	ASI	TJ
CO	Colombia	SA	CO
CY	Cyprus	EUR	CY
CZ	Czech-Republic	EUR	CZ
DE	Germany	EUR	D
DK	Denmark	EUR	DK
DO	Dominican Republic	SA	DOM
DZ	Algeria	AFR	DZ
EC	Ecuador	SA	EC
EE	Estonia	EUR	EW
EG	Egypt	AFR	ET
ES	Spain	EUR	E
FI	Finland	EUR	SF
FR	France	EUR	F
GB	United Kingdom	EUR	GB
GH	Ghana	AFR	GH

Changelog

CCU 6.91a:

=====

- ADDED:** - Option to reload configuration settings
- ADDED:** - Password on login-screen can now be pasted from clipboard + clear
- ADDED:** - Export Forecast data (201701009)
- ADDED:** - Set CCU read-only for all users when sending a message that starts with '@' (201704017)
- ADDED:** - Column Generation on application browse article level (201702005)
- ADDED:** - Option to add countries to country table (201703015)
- ADDED:** - Attribute priming for Application Attributes
- ADDED:** - Pin/Unpin Parstlist Overview and PartsOf Overview
- ADDED:** - Country Descriptions on HMD popup screen (201706005)
- ADDED:** - /ZIP command parameter to TecDoc Export
- CHANGED:** - Supervisor menu option Message is no longer hidden for some users (201703021)
- FIX:** - Commercial Remark Export
- FIX:** - Commercial Remark Import
- FIX:** - Excel output for read-only users (201705010)
- FIX:** - Delete Cross without OE (201704013)
- FIX:** - Running Interface Export in batch (201704008)
- FIX:** - Selecting DL-Supplier for TD export (201704011)
- FIX:** - Autorisation issue with manual selected % articles (201704021)
- FIX:** - Menu option Recalc VIO disappeared (201706011)
- FIX:** - Changing article didn't update Accessories (201706006)
- FIX:** - Missing records in 035.DAT files when running multiple maingroups
- FIX:** - Invalid 401.DAT in 2.4 export format



TecAlliance Netherlands BV

Horsterweg 24

6199 AC Maastricht Airport

The Netherlands www.tecalliance.net

Tel.: +31 433 650 212

Fax: +31 433 650 125

Internet: www.tecalliance.net/

E-mail: helpdesk@headlineweb.nl