

MAYOR OF LONDON

Coronavirus Speaker Series:

Sharing Knowledge to Respond with Resilience

Planning for Coronavirus in London

Alice Reeves - Deputy Chief Resilience Officer & Deputy Head of City Operations

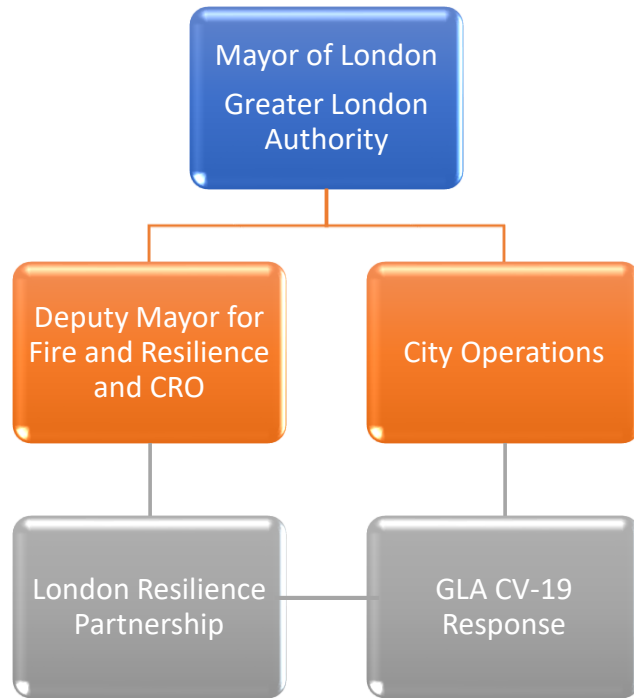


Note the presentations are organized for the purpose of knowledge sharing and do not necessarily represent the views of the organizers

Resilience In London

Active in Global Resilient Cities Network since November 2018

Published Strategy in February 2020



How resilience works

London resilience partnership plans for emergencies

>200 partners including emergency services, local government, utilities, voluntary sector: collective response



London context for pandemic response

Planning

Pandemic flu planning and emergency legislation managed by Department for Health and Social Care

Responsibility for local operational plans managed by London Resilience Partnership through the [London Risk Register](#)

The Partnership is a coalition of agencies in London, including emergency services, healthcare providers, business, the voluntary sector and local government – including the Greater London Authority

GLA required to follow government guidelines, even when business and others may behave differently

Challenges

- Covid-19 response managed centrally
- Local Government not represented in central decision-making
- Limited local powers to make decisions
- National guidance does not always fit immediate local or regional events: tension between national and local priorities

Where are we now?

Phase 0: until Monday 16 March – testing & self isolation for the sick

Phase 1: ‘Deter’ - family quarantine, testing only in hospitals, work from home & minimize social contact (social distancing measures)

Next phase Friday 20 March - School closure

TODAY:

+ work underway now to understand effectiveness of social distancing measures – we expect the situation to change day by day

+ expect new legislation that can enforce social distancing

How we are managing the emergency



1. Partnership emergency response



2. Care for vulnerable Londoners



3. Recovery thinking

GLA Priorities – Targeting the vulnerable

Charities and Voluntary sector

- + €3m additional financial support for organisations facing immediate financial pressures, increasing demand for services, staff absences, fewer volunteers and lower donations
- +taskforce on volunteering: coordinate thousands of volunteers across London boroughs
- + Older volunteers (at risk groups) switching to phone services for lonely / isolated people
- +‘Able’ volunteers to offer to pick up shopping/medicines
- + Advice on health, communications, safeguarding and practicalities for local authorities and local mutual aid groups

Emergency food supply planning with food sector

- +High levels of food poverty, people rely on food banks - when schools close, children are hungry

Homelessness – with boroughs and voluntary sector

- +Book accommodation for individuals to be able to self-isolate

Using community leaders to share messages in over 300 languages



GLA Priorities – Business support

Portal to support London businesses

+ COVID-19 (Coronavirus) – Support for Businesses and Employers

+ Online campaign to point business to advice

[Checklist to prepare your business for coronavirus](#) ▼

[Guidance for businesses and employers](#) ▼

[Coronavirus Business Interruption Loan Scheme](#) ▼

[Government support to manage the impact of coronavirus](#) ▼

[Financial support for business](#) ▼

Night-time economy support

+ Small grant for music venues sector

Repurposing existing business support as loans or grants for small businesses and businesses forced to close

ACTIVE RESPONSE: Emergency response structure includes a ‘Business Cell’ providing analysis and responding to the developing situation

What have we learnt so far?

1. Local Government Continuity is critical to the city

Keeping your city running will be reliant on your organizational plans!

- + Know your critical staff, know your critical functions – find single points of failure!
- + Know your capacity for managing virtually – test it
- + Prepare staff communications plans for the long-term: sharing contact details, providing sufficient resources to carry out duties, provide training information, and think about how you will manage returning

2. Build the response around the responders

Healthcare staff are your front line.....but so are community volunteers!

- + Ensure you have robust plans to support them, alongside any other frontline staff – ensure that the resources and support are available for them to continue working

3. Make friends now – you will need them later

- + Map and understand community sensitivities: work together as early as possible on complex challenges such as planning for excess deaths and funeral/burial arrangements in a shutdown situation



What have we learnt so far.....more!

4. Big events are for the city – but also for the people

Large events – we asked for events organizers to follow government guidelines

- + Organisers and attendees may want to cancel, even if the city thinks it is safe
- + Large events want to reschedule - plan ahead and consider who will need to cancel - rescheduling means big pressure on resources when everything reopens, this is too risky

5. Keep planning, to stay as agile as possible

Create time for everyone in your organization to look at the medium to long term in relation to your citizens

- + What will be affected over the next 6 months – 1 year
- + Understand your vulnerable and hard to reach populations, and consequences for them
- + What areas may not seem important now, but will be critical when normality returns (culture & arts sector?)

6. We need to think about the future and what will change.....right now!

Start thinking about recovery as early as possible - and involve your communities and stakeholders in this process

- + We assume that there will be a 'new normal' after Covid-19....so we need to develop the capability to understand what it might be – to do this by working together





Thank you and keep well!

Note the presentations are organized for the purpose of knowledge sharing and do not necessarily represent the views of the organizers

