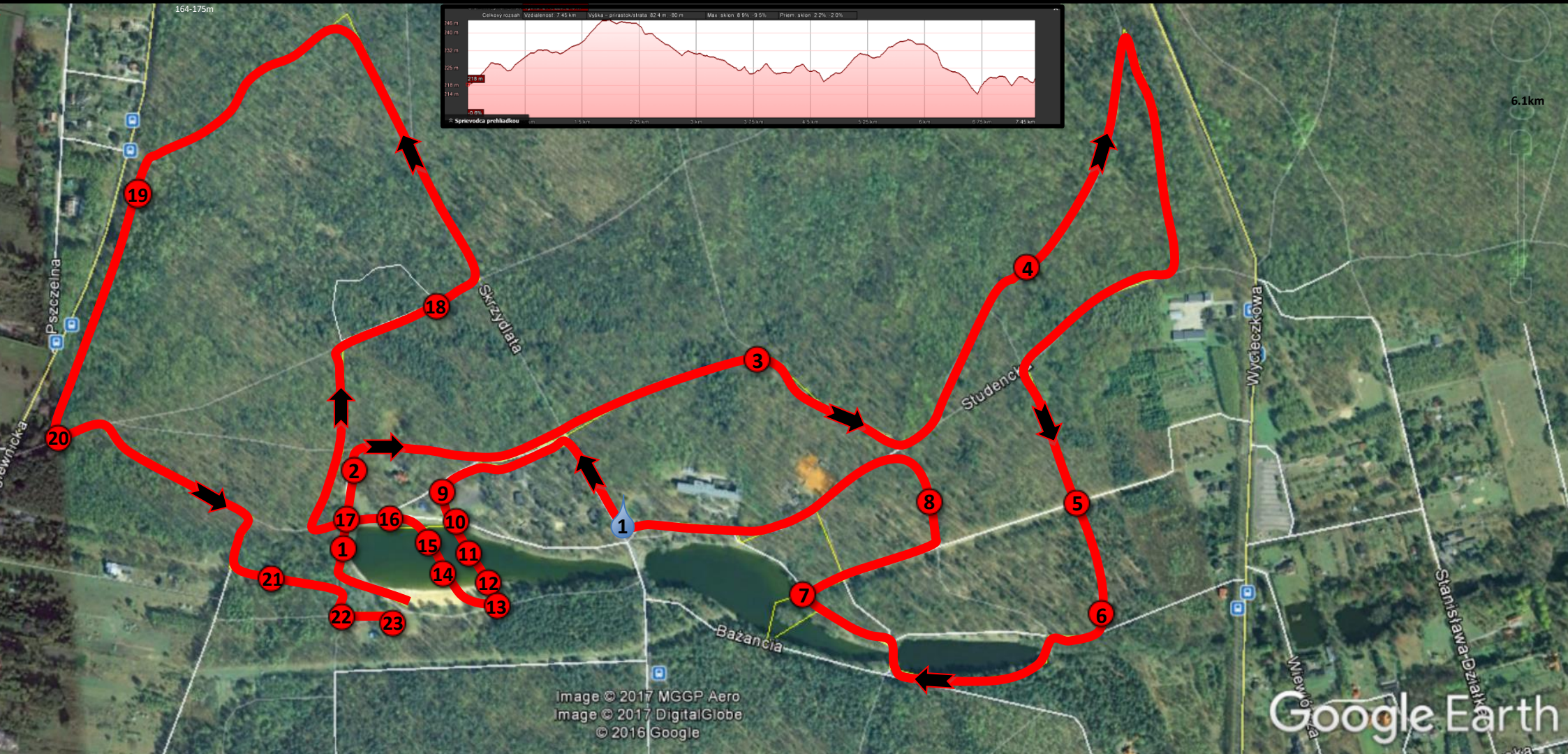


Lodz Sprint 2017



SPARTAN



- | | | | | |
|----------------|-------------------------|-----------------|---------------------|------------------|
| 1. Across tyre | 6. 7ft. wall | 11. Streaming 1 | 16. Hercules Hoist | 21. Atlass Carry |
| 2. OUT | 7. Slack Line | 12. Slip Wall | 17. A-Cargo | 22. Big Cargo |
| 3. Hurdle | 8. Barbedwrie Crawl low | 13. Multirig | 18. Sandbags | 23. Invert wall |
| 4. 6ft. Wall | 9. Rope Climb | 14. Dunk Wall | 19. Barbedwire high | |
| 5. Ballance | 10. Monkey bar 'A' | 15. Streaming 2 | 20. Spearthrow | |

Symbols: - Directional - Obstacle - Track - Water Station